

RoHS Compliance

NOTE:

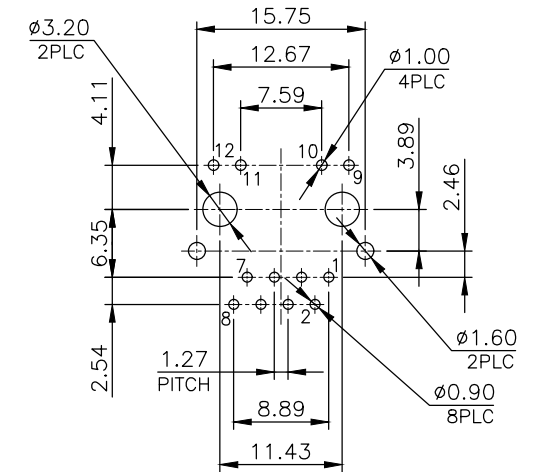
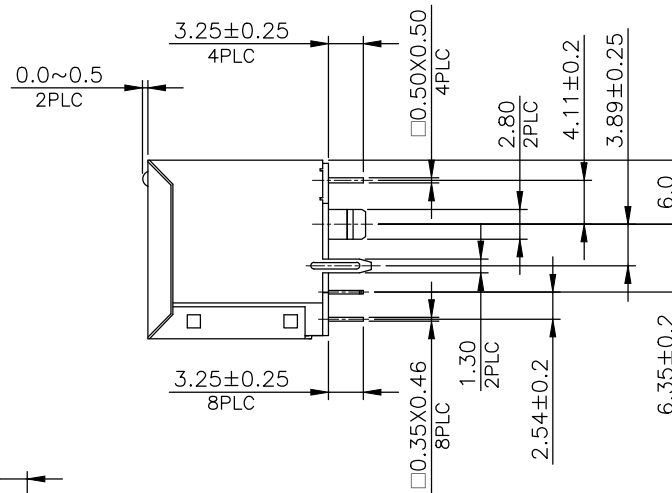
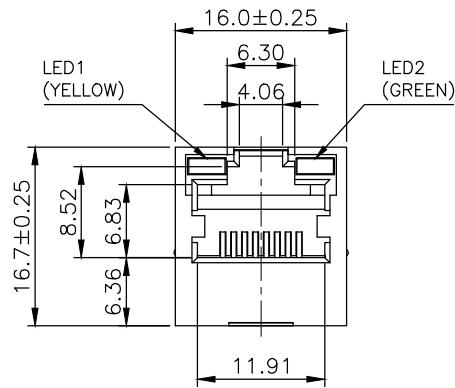
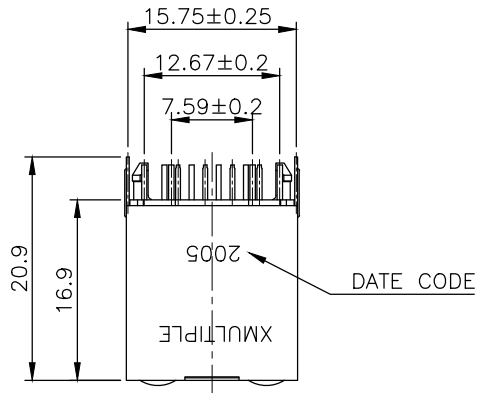
CAVITY CONFIRMS TO FCC RULES AND REGULATIONS PART 68, SUBPART F.

1. MATERIAL:

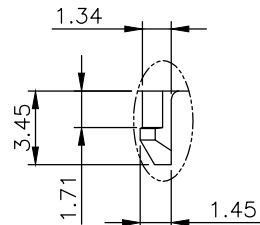
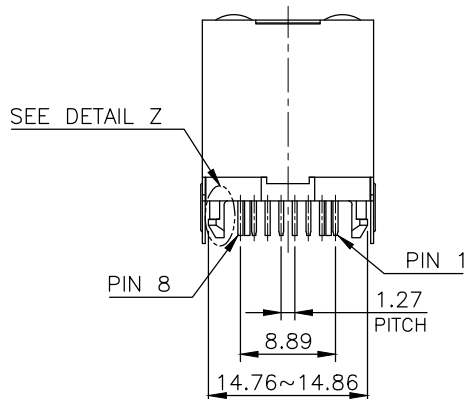
- 1.1 HOUSING: PBT , WITH GLASS FIBER, UL94V-0, STANDARD COLOR-BLACK.
- 1.2 INSERT HOUSING: PA46, WITH GLASS FIBER, UL94V-0, STANDARD COLOR-BLACK.
- 1.3 COVER: PBT , WITH GLASS FIBER, UL94V-0, STANDARD COLOR-BLACK.
- 1.4 CONTACTS: PHOSPHOR BRONZE.
- 1.5 SHELL: BRASS.
- 1.6 LED SOLDER TAIL: STEEL.

2. FINISH:

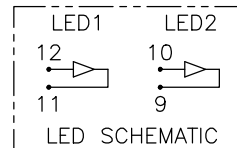
- 2.1 CONTACTS: 0.381 μ m [15 μ "] GOLD PLATED ON CONTACT AREA, GOLD FLASH ON SOLDER TAIL, 1.27 μ m [50 μ "] MIN. NICKEL UNDERPLATED OVERALL.
- 2.2 SHELL: 0.508 μ m [20 μ "] MIN. NICKEL PLATED.
- 2.3 LED SOLDER TAIL: 2.032 μ m [80 μ "] MIN. TIN PLATED.



RECOMMENDED PCB LAYOUT
PCB THICKNESS: 1.6mm
TOLERANCE: ±0.05mm (TOP VIEW)



DETAIL Z
SCALE 2:1



REVISIONS	DESCRIPTION	DATE	APVD

THIS DRAWING IS A CONTROLLED DOCUMENT. DO NOT SCALE DRAWING.	
DIMENSIONS: MM	TOLERANCES UNLESS OTHERWISE SPECIFIED:
	X ± - X.X ± 0.25 X.XX ± 0.13 X.XXX ± 0.05 ANGLES ± -
MATERIAL	FINISH
SEE NOTES	SEE NOTES
DWN T. LI	DATE SEP-11-2014
CHK D. Wang	SEP-11-2014
APVD R. Tsai	SEP-12-2014

TITLE RJ45, WITH TRANSFORMER, FLAT PIN, WITH LED'S, TOP ENTRY PCB JACK	
SIZE A3	DRAWING NO XRJV-01V-1-D22-180
WEIGHT - GRAMS Ref.	REV 11 SHEET 1

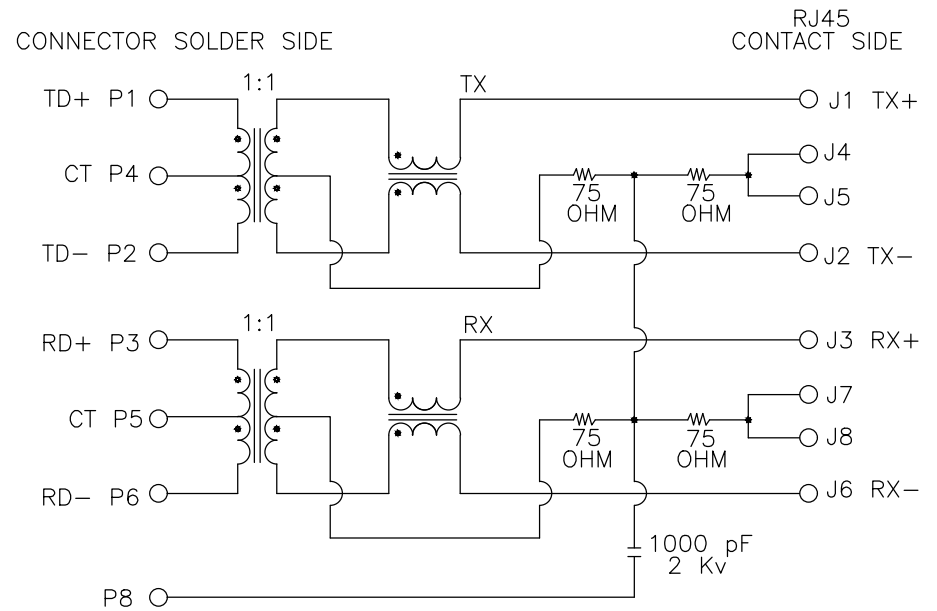
RoHS Compliance

9813 TRANSFORMER TYPE 6

ELECTRICAL CHARACTERISTICS

TEST NOTES: (25°±5°C)

1. TR: (100KHz, 0.1V);
PINS:(1-2):(J1-J2)=1CT:1CT±3%;
PINS:(3-6):(J3-J6)=1CT:1CT±3%;
2. LX: (100KHz, 100mV, 8mA, DC Bias)
PINS: (1,2),(3,6)=350uH MINIMUM
3. DCR:
PINS: (1-2),(J1-J2),(J3-J6)=1.0 OHMS MAXIMUM.
PINS: (5-6)=1.2 OHMS MAXIMUM.
4. INSERTION LOSS:
-1.0dB MAXIMUM AT 1MHz TO 100MHz
5. RETURN LOSS:
-20dB MINIMUM AT 1MHz TO 30MHz
-15dB MINIMUM AT 30MHz TO 60MHz
-10dB MINIMUM AT 60MHz TO 100MHz
6. CROSS TALK:
-30dB MINIMUM AT 1MHz TO 100MHz
7. COMMON TO COMMON MODE REJECTION:
-30dB MINIMUM AT 1MHz TO 100MHz



CONNECTOR SCHEMATIC

THIS DRAWING IS A CONTROLLED DOCUMENT.
DO NOT SCALE DRAWING.

DIMENSIONS: MM
TOLERANCES UNLESS OTHERWISE SPECIFIED:

THIRD ANGLE PROJECTION
MATERIAL: SEE NOTES
FINISH: SEE NOTES



TITLE RJ45, WITH TRANSFORMER, FLAT PIN, WITH LED'S, TOP ENTRY PCB JACK

REVISIONS	DESCRIPTION	DATE	APVD
△ -			
LTR			

DWN T. LI
CHK D. Wang
APVD R. Tsai
DATE MAY-15-2014
MAY-15-2014
MAY-16-2014

SIZE A3
DRAWING NO XRJV-01V-1-D22-180
WEIGHT - GRAMS Ref.
REV 1 SHEET 2