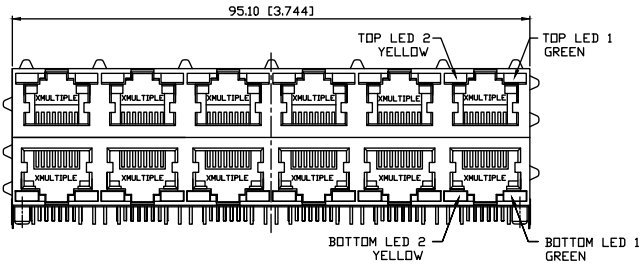
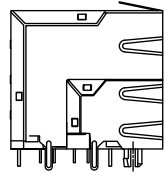
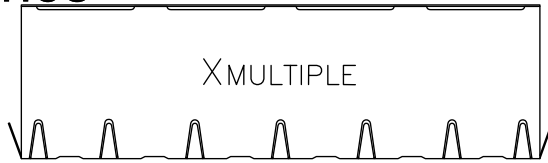
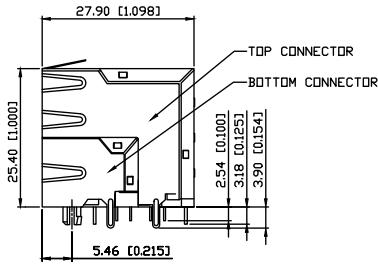


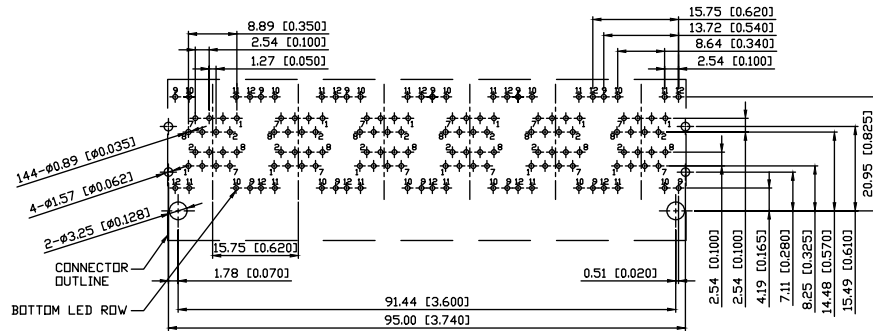
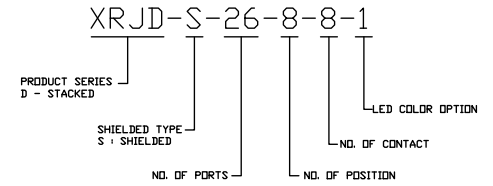
# RoHS Compliance



FRONT VIEW

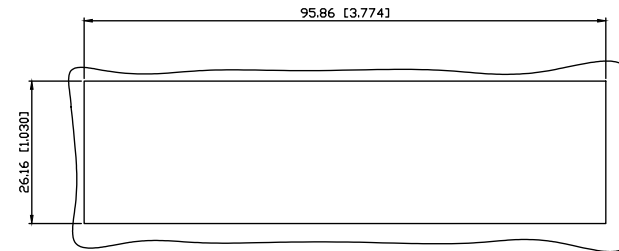


SIDE VIEW



SUGGESTED PCB LAYOUT  
TOP VIEW

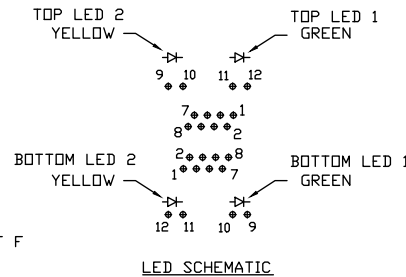
DIMENSIONAL TOLERANCE: .XX ±0.08[0.003]



RECOMMENDED  
PANEL CUTOUT DIMENSION

## NOTES:

- MATERIALS:**  
HOUSING: HIGH TEMP. THERMOPLASTIC, PBT, UL 94V-0, BLACK.  
CONTACTS: T=0.35 mm PHOSPHOR BRONZE, 50µ" NICKEL UNDERPLATE  
ON ALL AREA, 100µ" TIN ON TERMINATION END,  
15µ" GOLD ON CONTACT AREA.  
SHIELD: T=0.25 mm COPPER ZINC ALLOY PLATED WITH NICKEL
- OPERATING TEMPERATURE: -40°C ~ +85°C
- JACK CAVITY CONFORMS TO FCC RULES AND REGULATIONS PART 68, SUBPART F
- UNSPECIFIED TOLERANCE: .XX ±0.25[0.010]  
.X ±0.30[0.012]



LED SCHEMATIC

THIS DRAWING IS A CONTROLLED DOCUMENT. DO NOT SCALE DRAWING.	
DIMENSIONS: MM	TOLERANCES UNLESS OTHERWISE SPECIFIED:
	X ± - X.X ± 0.25 X.XX ± 0.13 X.XXX ± 0.05 ANGLES ± -
THIRD ANGLE PROJECTION	
MATERIAL SEE NOTES	FINISH SEE NOTES
DWN <i>T. Li</i>	DATE OCT-04-2018
CHK <i>D. Wang</i>	OCT-04-2018
APVD <i>R. Tsai</i>	OCT-04-2018



www.xmultiple.com

TITLE Stacked RJ45 Connectors, With LED,  
8P8C, Shielded, Thru Hole,  
2 Piece Structure

△	-	-	-
LTR	DESCRIPTION	DATE	APVD
REVISIONS			

SIZE A3	DRAWING NO XRJD-S-26-8-8-1
WEIGHT - GRAMS Ref.	REV 1 SHEET 1