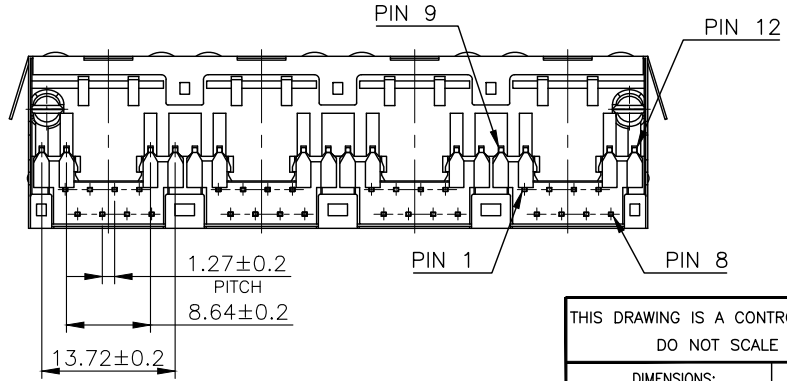
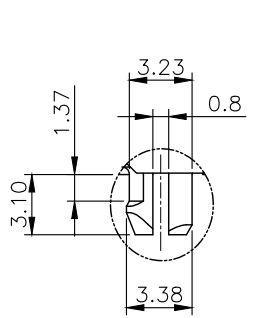
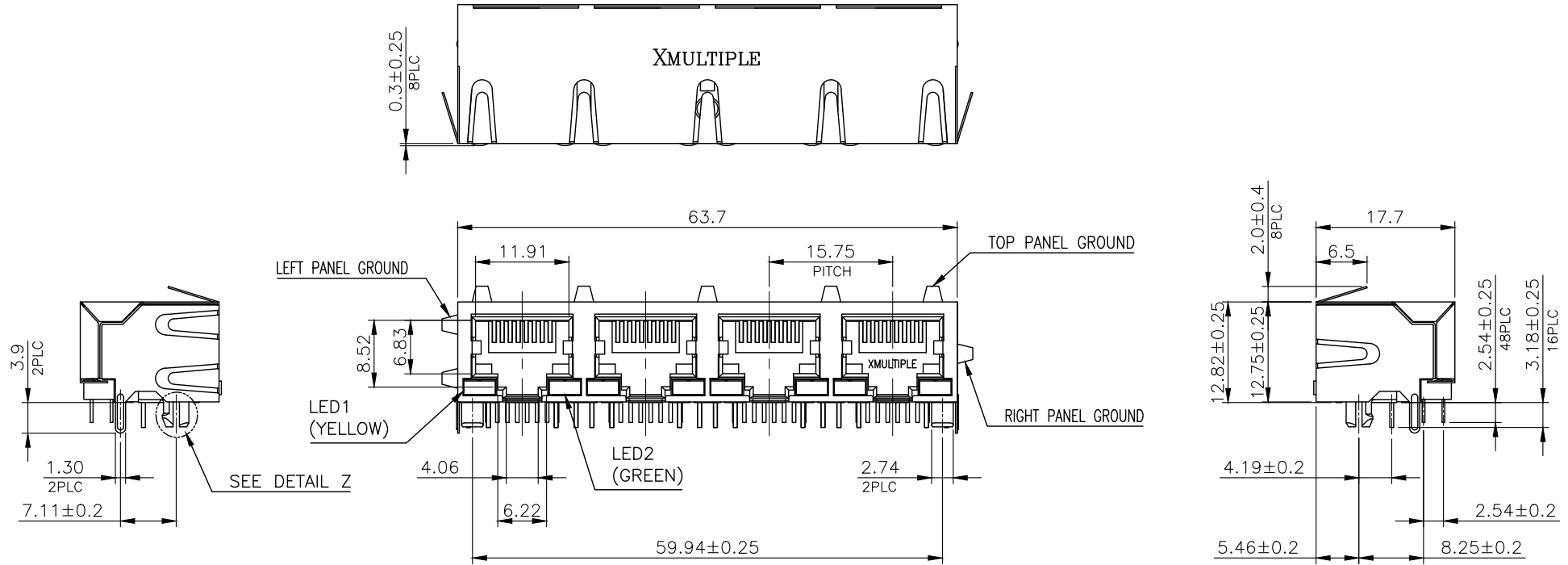


# RoHS Compliance



THIS DRAWING IS A CONTROLLED DOCUMENT.  
DO NOT SCALE DRAWING.

DIMENSIONS: MM	TOLERANCES UNLESS OTHERWISE SPECIFIED:
	X ± - X.X ± 0.25 X.XX ± 0.13 X.XXX ± 0.05 ANGLES ± -
THIRD ANGLE PROJECTION	
MATERIAL SEE NOTES	FINISH SEE NOTES
DWN A.HUANG	DATE DEC-24-2015
CHK	DEC-24-2015
APVD	DEC-25-2015



TITLE		RJ45, 4PORTS, W/LED, W/ SHELL, SIDE ENTRY PCB JACK	
SIZE	DRAWING NO		
A3	XRJDB-S-04-8-8-1		
WEIGHT	- GRAMS Ref.	REV	SHEET
		1	1

REVISIONS	DESCRIPTION	DATE	APVD

# RoHS Compliance

NOTE:

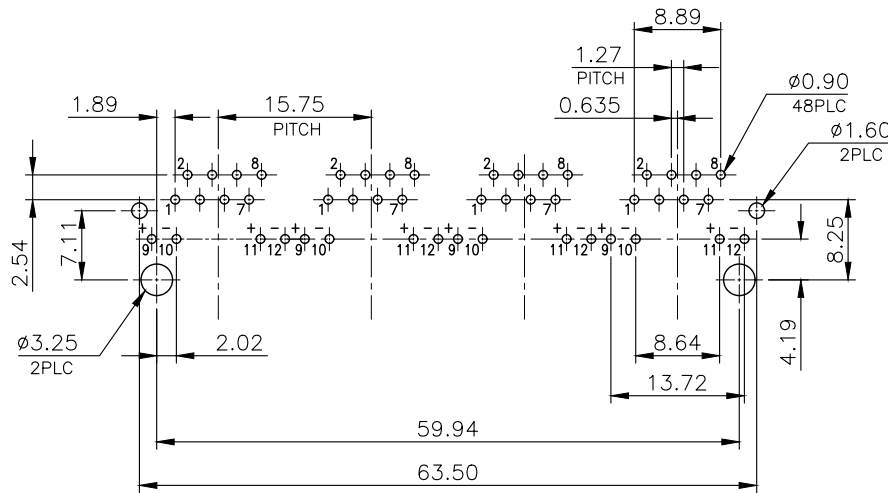
CAVITY CONFIRMS TO FCC RULES AND REGULATIONS PART 68, SUBPART F.

1. MATERIAL:

- 1.1 HOUSING: PBT, WITH GLASS FIBER,,  
UL94V-0, STANDARD COLOR-BLACK.
- 1.2 INSERT HOUSING: PBT, WITH GLASS FIBER,  
UL94V-0, STANDARD COLOR-BLACK.
- 1.3 COVER: PBT, WITH GLASS FIBER,  
UL94V-0, STANDARD COLOR-BLACK.
- 1.4 CONTACTS: PHOSPHOR BRONZE.
- 1.5 SHELL: BRASS.
- 1.6 LED SOLDER TAIL: STEEL.

2. FINISH:

- 2.1 CONTACTS: 0.381 $\mu\text{m}$  [15 $\mu''$ ] GOLD PLATED ON CONTACT AREA,  
2.54 $\mu\text{m}$  [100 $\mu''$ ] TIN PLATED ON SOLDER TAIL,  
WITH ENTIRE CONTACT UNDERPLATED  
1.27 $\mu\text{m}$  [50 $\mu''$ ] MIN. NICKEL
- 2.2 SHELL: 0.508 $\mu\text{m}$  [20 $\mu''$ ] MIN. NICKEL PLATED.
- 2.3 LED SOLDER TAIL: 2.032 $\mu\text{m}$  [80 $\mu''$ ] MIN. TIN PLATED.



RECOMMENDED PCB LAYOUT  
RECOMMENDED PCB THICKNESS: 1.6mm  
TOLERANCE:  $\pm 0.05$  (TOP VIEW)

LED CHARACTERISTIC	
NO.	NODE
LED1	9+ $\rightarrow$ $\nabla$ - -10
LED2	11+ $\rightarrow$ $\nabla$ - -12

THIS DRAWING IS A CONTROLLED DOCUMENT.  
DO NOT SCALE DRAWING.

DIMENSIONS: MM	TOLERANCES UNLESS OTHERWISE SPECIFIED:
	X $\pm$ - X.X $\pm$ - X.XX $\pm$ - X.XXX $\pm$ - ANGLES $\pm$ -
THIRD ANGLE PROJECTION	
MATERIAL SEE NOTES	FINISH SEE NOTES



TITLE  
RJ45, 4PORTS,  
W/LED, W/ SHELL, SIDE ENTRY PCB JACK

LTR	DESCRIPTION	DATE	APVD
REVISIONS			

DWN <i>A.HUANG</i>	DATE DEC-24-2015	SIZE A3	DRAWING NO XRJDB-S-04-8-8-1
CHK	DEC-24-2015	WEIGHT - GRAMS Ref.	REV - SHEET 2
APVD	DEC-25-2015		