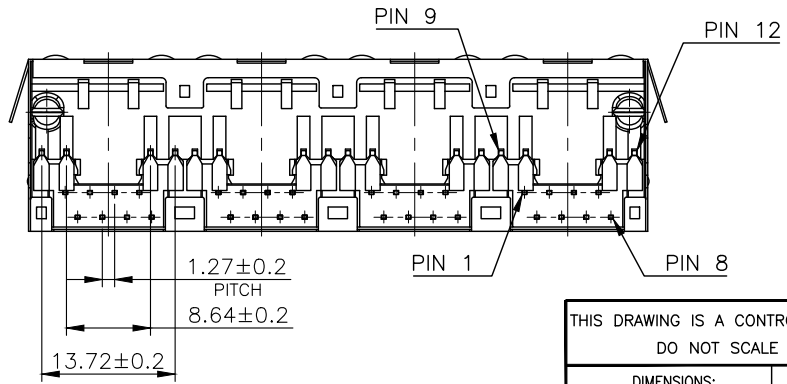
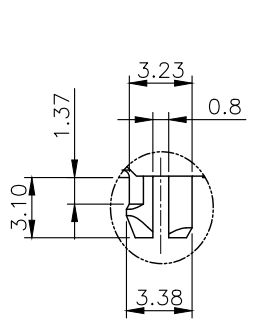
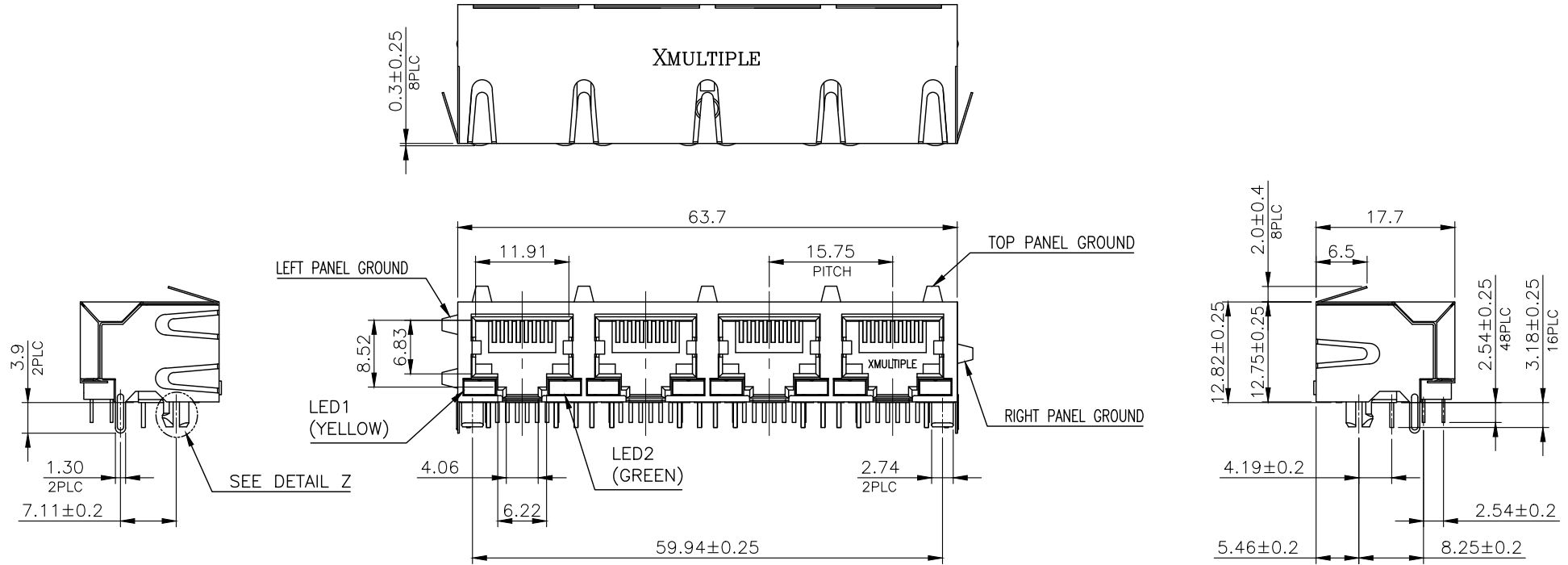


RoHS Compliance



THIS DRAWING IS A CONTROLLED DOCUMENT.
DO NOT SCALE DRAWING.

DIMENSIONS: MM	TOLERANCES UNLESS OTHERWISE SPECIFIED:
	X ± - X.X ± 0.25 X.XX ± 0.13 X.XXX ± 0.05 ANGLES ± -
THIRD ANGLE PROJECTION	
MATERIAL SEE NOTES	FINISH SEE NOTES
DWN A.HUANG	DATE DEC-24-2015
CHK	DEC-24-2015
APVD	DEC-25-2015



TITLE RJ45, 4PORTS,
W/LED, W/ SHELL, SIDE ENTRY PCB JACK

REVISIONS	DESCRIPTION	DATE	APVD

SIZE A3	DRAWING NO XMDB-9850-8811-4-S3L2-C
WEIGHT - GRAMS Ref.	REV 1 SHEET 1

RoHS Compliance

NOTE:

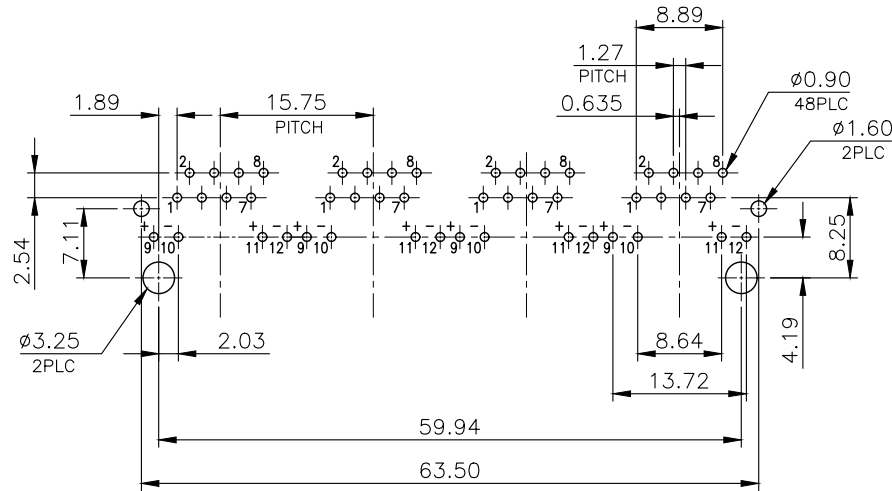
CAVITY CONFIRMS TO FCC RULES AND REGULATIONS PART 68, SUBPART F.

1. MATERIAL:

- 1.1 HOUSING: PBT, WITH GLASS FIBER,,
UL94V-0, STANDARD COLOR-BLACK.
- 1.2 INSERT HOUSING: PBT, WITH GLASS FIBER,
UL94V-0, STANDARD COLOR-BLACK.
- 1.3 COVER: PBT, WITH GLASS FIBER,
UL94V-0, STANDARD COLOR-BLACK.
- 1.4 CONTACTS: PHOSPHOR BRONZE.
- 1.5 SHELL: BRASS.
- 1.6 LED SOLDER TAIL: STEEL.

2. FINISH:

- 2.1 CONTACTS: 0.381μm [15μ"] GOLD PLATED ON CONTACT AREA,
2.54μm [100μ"] TIN PLATED ON SOLDER TAIL,
WITH ENTIRE CONTACT UNDERPLATED
1.27μm [50μ"] MIN. NICKEL
- 2.2 SHELL: 0.508μm [20μ"] MIN. NICKEL PLATED.
- 2.3 LED SOLDER TAIL: 2.032μm [80μ"] MIN. TIN PLATED.



RECOMMENDED PCB LAYOUT
RECOMMENDED PCB THICKNESS: 1.6mm
TOLERANCE: ±0.05 (TOP VIEW)

LED CHARACTERISTIC	
NO.	NODE
LED1	9+ - -10
LED2	11+ - -12

THIS DRAWING IS A CONTROLLED DOCUMENT.
DO NOT SCALE DRAWING.

DIMENSIONS: MM	TOLERANCES UNLESS OTHERWISE SPECIFIED:
-------------------	---

X	± -
X.X	± -
X.XX	± -
X.XXX	± -
ANGLES	± -

THIRD ANGLE PROJECTION

MATERIAL	FINISH
----------	--------

SEE NOTES	SEE NOTES
-----------	-----------

DWN	A.HUANG	DATE	DEC-24-2015
CHK		DATE	DEC-24-2015
APVD		DATE	DEC-25-2015



www.xmultiple.com

TITLE RJ45, 4PORTS,
W/LED, W/ SHELL, SIDE ENTRY PCB JACK

SIZE	DRAWING NO
A3	XMDB-9850-8811-4-S3L2-C

WEIGHT	- GRAMS Ref.	REV	-	SHEET	2
--------	--------------	-----	---	-------	---

LTR	DESCRIPTION	DATE	APVD
REVISIONS			