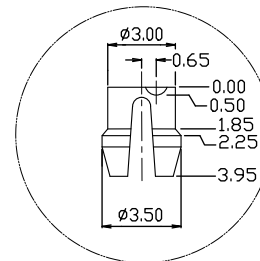
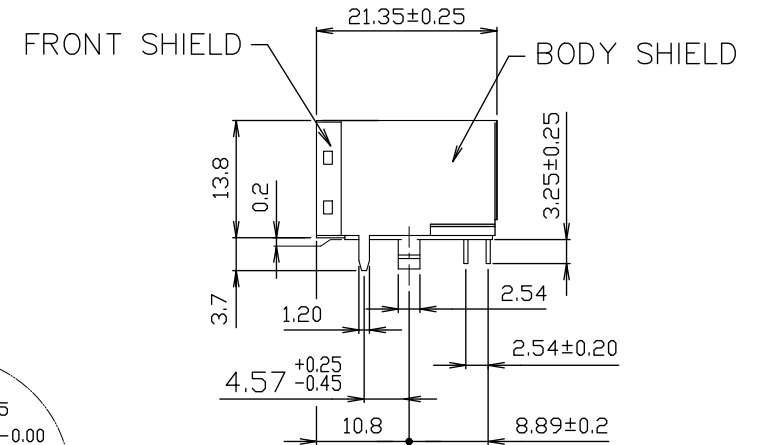
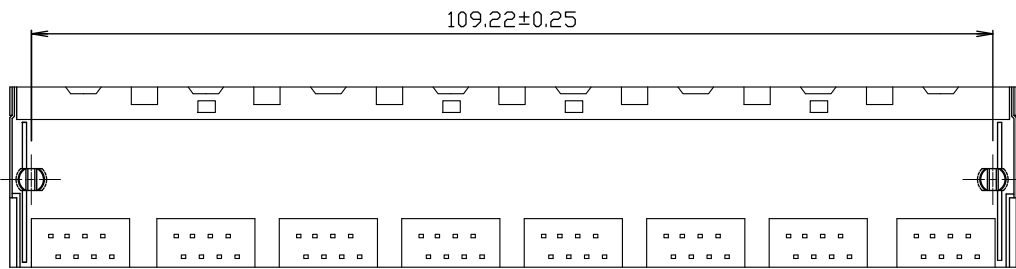
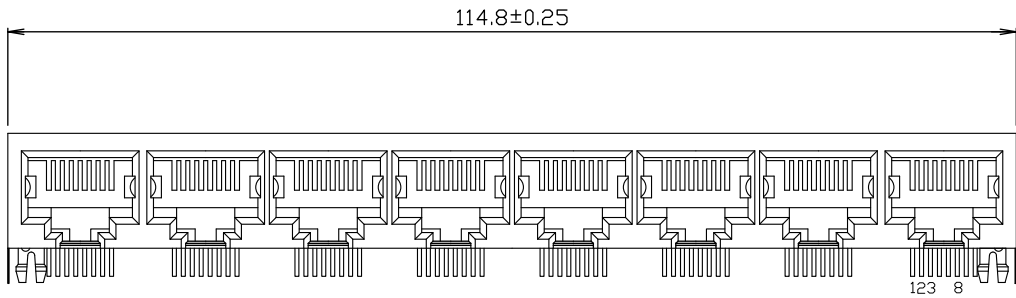


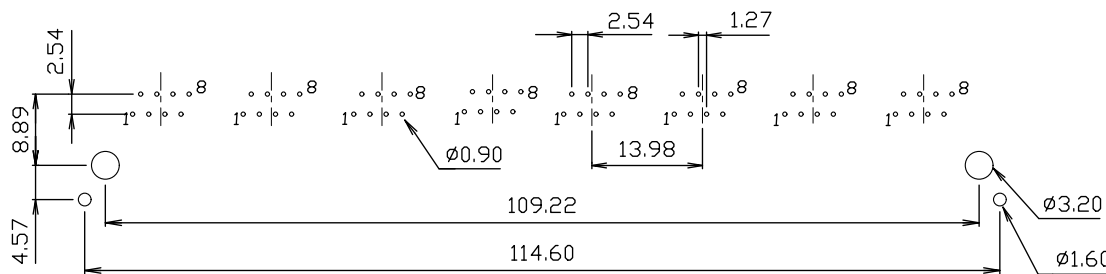
RoHS Compliance

MATERIALS:

- HOUSING-PBT POLYESTER UL94V-0
MIXED GLASS FIBER.
STANDARD COLOR-BLACK
 - CONTACTS-0.35mm THICK PHOS-BRONZE PLATED
WITH 6u" HARD GOLD AND GOLD FLASH
IN SOLDER AREA.
 - MATEL SHIELD-0.25mm THICK COPPER ALLOY,
PLATED WITH NICKEL.
- CAVITY CONFIRMS TO FCC RULES AND REGULATIONS
PART 68,SUBPART F.



SPLIT-PEGS



PC Board Layout
REF.

THIS DRAWING IS A CONTROLLED DOCUMENT. DO NOT SCALE DRAWING.	
DIMENSIONS: MM	TOLERANCES UNLESS OTHERWISE SPECIFIED:
	X ± - X.X ± 0.25 X.XX ± 0.13 X.XXX ± 0.05 ANGLES ± -
THIRD ANGLE PROJECTION	
MATERIAL SEE NOTES	FINISH SEE NOTES
DWN T. Li	DATE OCT-04-2018
CHK D. Wang	OCT-04-2018
APVD R. Tsai	OCT-04-2018



www.xmultiple.com

TITLE
8 PORTS 8POSITION SHIELDED
FLAT PIN SIDE ENTRY PCB GANGED JACK

REVISIONS	DESCRIPTION	DATE	APVD
△ -			
LTR	DESCRIPTION	DATE	APVD

SIZE A3	DRAWING NO XRJK-S-08-8-8-0-9Q4
WEIGHT - GRAMS Ref.	REV 1 SHEET 1