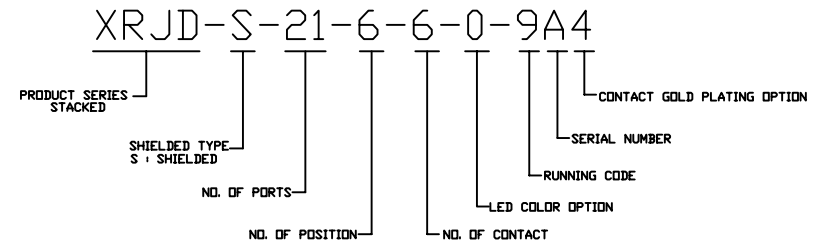
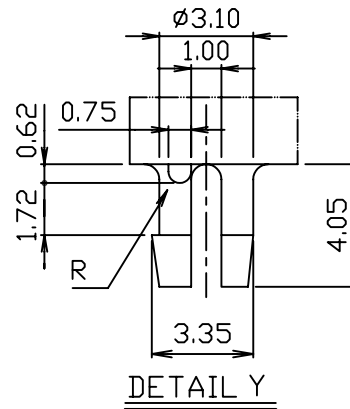
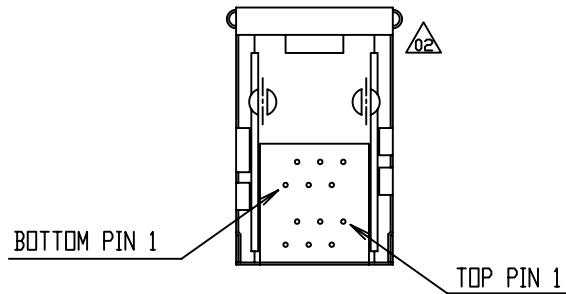


**RECOMMENDED PCB LAYOUT  
TOP VIEW**



**NOTES:**

- MATERIALS:  
HOUSING-PBT POLYESTER UL-94V-0  
MIXED GLASS FIBER.  
STANDARD COLOR-BLACK  
CONTACTS-0.35mm THICK PHOS-BRONZE  
PLATED WITH 6u" GOLD  
AND TIN IN SOLDER AREA.  
SHIELD-0.25mm THICK COPPER ALLOY,  
PLATED WITH NICKEL.
- CAVITY CONFORMS TO FCC RULES AND  
REGULATIONS PART 68,SUBPART F.
- UNSPECIFIED TOLERANCE: .XX ±0.25[0.010]  
.X ±0.30[0.012]

**RoHS Compliant**

<b>X</b> MULTIPLE		CONNECTING THE INFORMATION AGE	
MULTIPLE ASIA 4F, No. 347, Yang Guang St., Neihu Chu, Taipei, Taiwan 11475		MULTIPLE USA 1420 Los Angeles Ave., Suite G, Simi Valley, CA 93065	
THIS DRAWING IS A CONTROLLED DOCUMENT.		G/NO:	
TITLE: 2X1 6 POSITIONS RIGHT ANGLE SHIELDED PCB JACK		DWG NO: XRJD-S-21-6-6-0-9A4	
PART NO: XRJD-S-21-6-6-0-9A4		DRAWN: RUNES	
		CHKD: JEFF	
		DATE: Aug.29,06	
UNIT mm[inch]		SHEET 1 of 1	
		REV 02	