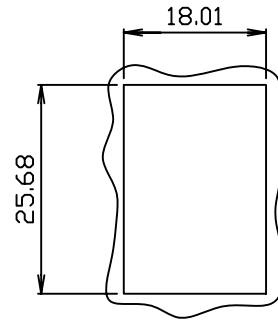
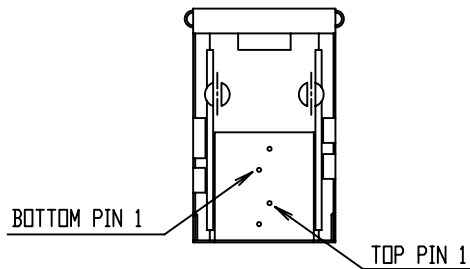
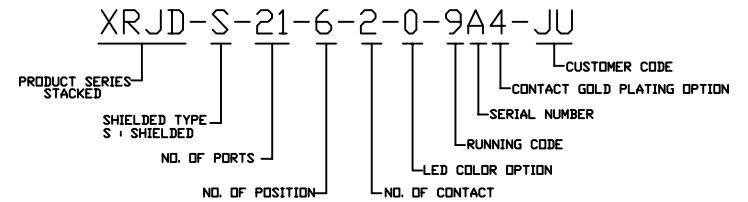


SUGGESTED PCB LAYOUT
TOP VIEW
DIMENSIONAL TOLERANCE: .XX ±0.08[0.003]

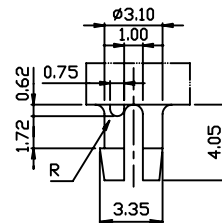


RECOMMENDED
PANEL CUTOUT DIMENSION



NOTES:

- MATERIALS:
HOUSING: PBT POLYESTER UL-94V-0
MIXED GLASS FIBER.
STANDARD COLOR-BLACK
CONTACTS: 0.35mm THICK PHOS-BRONZE
PLATED WITH 6µ" GOLD
AND TIN IN SOLDER AREA.
SHIELD: 0.25mm THICK COPPER ALLOY,
PLATED WITH NICKEL.
- OPERATING TEMPERATURE : -40°C ~85°C
- CAVITY CONFORMS TO FCC RULES AND REGULATIONS
PART 68, SUBPART F.
- UNSPECIFIED TOLERANCE: .XX ±0.25[0.010]
.X ±0.30[0.012]



DETAIL Y

RoHS Compliant

MULTIPLE USA 1420 Los Angeles Ave., Suite G, Simi Valley, CA 93065		G/NO: 9731	
THIS DRAWING IS A CONTROLLED DOCUMENT.			
TITLE: STACKED RJ11 CONNECTORS, W/D LED, 6P, 2C, SHIELDED, THRU HOLE		DWG NO: XRJD-S-21-6-2-0-9A4-JU	
PART NO: XRJD-S-21-6-2-0-9A4-JU		DRAWN: LEON	
		UNIT: mm [Inch]	
		SHEET: 1 of 1	
		REV: 01	
		DATE: Nov.05,07	