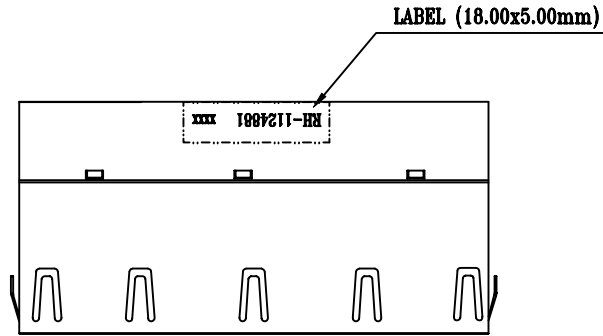
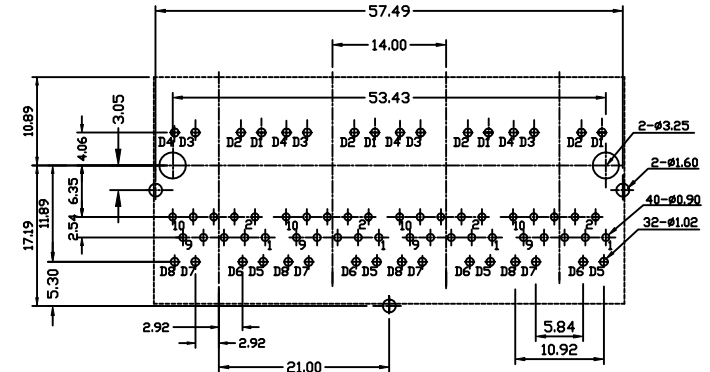
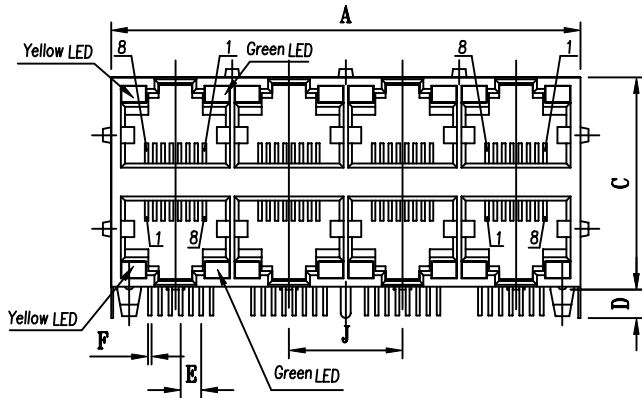


1. MECHANICAL DIMENSIONS :

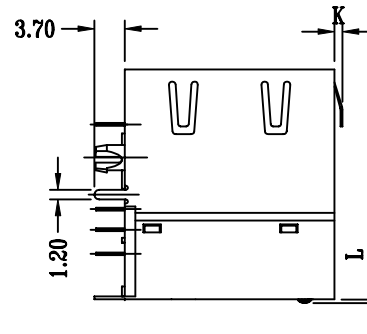
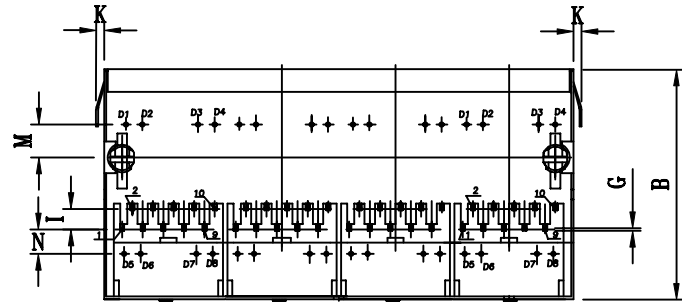


UNIT : mm / inch

- A = 57.88±0.254 / 2.279±0.010
- B = 28.50±0.254 / 1.122±0.010
- C = 26.20±0.254 / 1.031±0.010
- D = 3.50±0.254 / 0.138±0.010
- E = 2.54 / 0.100 (TYP)
- F = 0.50±0.127 / 0.020±0.005
- G = 0.35±0.127 / 0.014±0.005
- H = 8.89 / 0.350 (TYP)
- I = 2.54 / 0.100 (TYP)
- J = 14.00 / 0.551 (TYP)
- K = 1.00±0.18 / 0.039±0.007
- L = 0.90 / 0.035 MAX
- M = 4.06 / 0.160 (TYP)
- N = 3.00 / 0.118 (TYP)



RECOMMENDED P.C.B. LAYOUT
TOP VIEW



LED Color Options Table

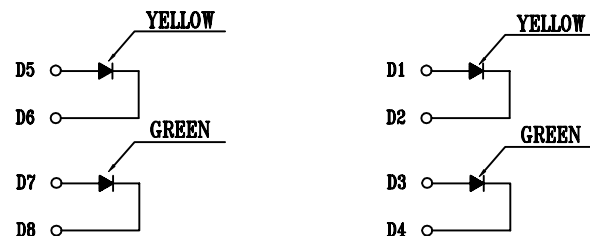
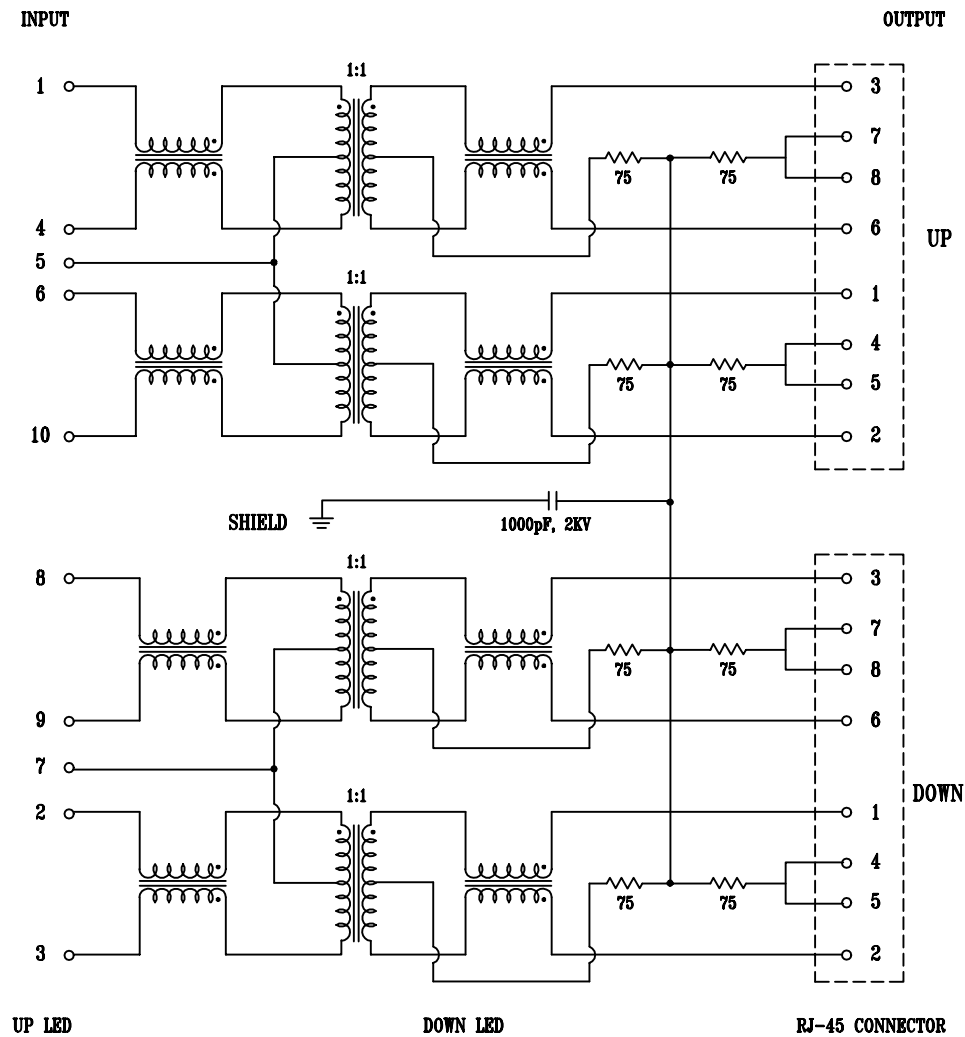
LED Color Options		LED DASH OPTION
Position 2(Left)	Position 1(Right)	
No LED	No LED	0
Yellow	Green	1
No LED	Green	2
Yellow	No LED	3
Green	Yellow	4
Green	Green	5
Yellow	Yellow	6
Orange/Green	Orange/Green	7
Yellow/Green	Yellow/Green	8
Green/Orange	Yellow	W2

NOTES:

1. MATERIALS:
HOUSING: HIGH TEMPERATURE NYLON UL94V-0 BLOCK
CONTACTS: T=0.35 PHOSPHOR BORNZE, NICKEL UNDERPLATE ON ALL AREA, TIN-LEAD ON TERMINATION END, 30u" ON CONTACT AREA.
SHIELD: SUS301 T=0.20 mm WITH TIN-LEAD ON TERMINATION END.
2. JACK CAVITY CONFORMS TO FCC RULES AND REGULATIONS PART 68, SUBPART F
3. UNSPECIFIED TOLERANCE: .XX ±0.25[0.010]
.X ±0.30[0.012]

XMULTIPLE		CONNECTING THE INFORMATION AGE
XMULTIPLE ASIA SF, No. 80, Julian St., Taipei, Taiwan 10408	XMULTIPLE USA 3066 Old Conejo Road Newbury Park, CA 91320	S/NO:
THIS DRAWING IS A CONTROLLED DOCUMENT.		DWG NO: XRJH-11-24-8-8-1
TITEL: Stacked RJ45, Connectors, W/LED, 8P8C, Shielded, Thrn Hole, 2 Piece Structure		DRAWN: JEFF
PART NO: XRJH-11-24-8-8-1		CHKD: C. TSAI
	DIMENSIONS	SHEET
mm [inch]	1 of 2	REV
	A	DATE: 10/16/02

2. SCHEMATIC:



3. ELECTRICAL CHARACTERISTICS :

3-1. TRANSMITTER FILTER

TYPE: BALANCE LOW PASS 100 OHM IMPEDANCE NOM
 INSERTION LOSS: 1-100 MHZ -1.0dB MAX.
 RETURN LOSS: 1-30 MHZ -20dB MIN. LOAD 100 OHM
 30-60 MHZ -15dB MIN. LOAD 100 OHM
 60-80 MHZ -11dB MIN. LOAD 100 OHM

3-2. RECEIVER FILTER

TYPE: BALANCE LOW PASS 100 OHM IMPEDANCE NOM
 INSERTION LOSS: 1-100 MHZ -1.0dB MAX.
 RETURN LOSS: 1-30 MHZ -20dB MIN. LOAD 100 OHM
 30-60 MHZ -17dB MIN. LOAD 100 OHM
 60-80 MHZ -15dB MIN. LOAD 100 OHM

3-3. COMMON MODE REJECTION :

@1-100 MHZ -30dB MIN.

3-4. CROSS TALK :

@1-100 MHZ -30dB MIN.

3-5. PRIMARY INDUCTANCE

(1-4), (6-10) : 350uH MIN. @100KHZ, 0.1V, 8mA
 (8-9), (2-3) : 350uH MIN. @100KHZ, 0.1V, 8mA

3-6. HiPot TEST :

Input(1-4) to Down Output(3-6) : 1500Vrms, 60sec
 Input(6-10) to Down Output(1-2) : 1500Vrms, 60sec
 Input(8-9) to Up Output(3-6) : 1500Vrms, 60sec
 Input(2-3) to Up Output(1-2) : 1500Vrms, 60sec

X MULTIPLE		CONNECTING THE INFORMATION AGE	
X MULTIPLE ASIA SF, No. 60, Julien St. Taipei, Taiwan 10498		X MULTIPLE USA 3066 Old Conejo Road Newbury Park, CA 91320	
THIS DRAWING IS A CONTROLLED DOCUMENT.		S/NO:	
TITEL: Stacked RJ45, Connectors, W/LED, 8P8C, Shielded, Thru Hole, 2 Piece Structure		DWG NO: XRJH-11-24-8-8-1	
PART NO: XRJH-11-24-8-8-1		DRAWN: JEFF	
DIMENSIONS: mm [inch]		CHKD: C. TSAI	
SHEET: 2 of 2		DATE: 10/16/02	
REV: A			