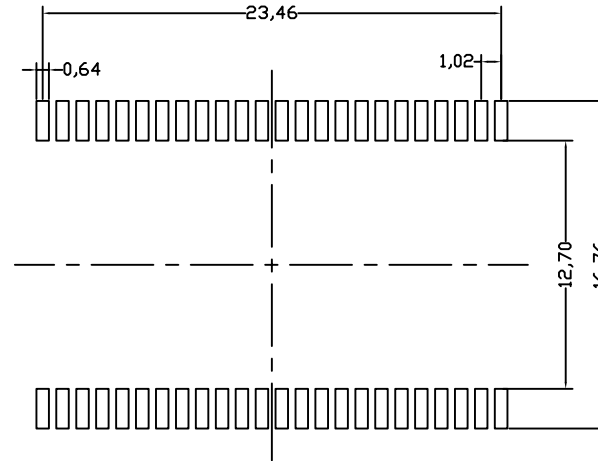
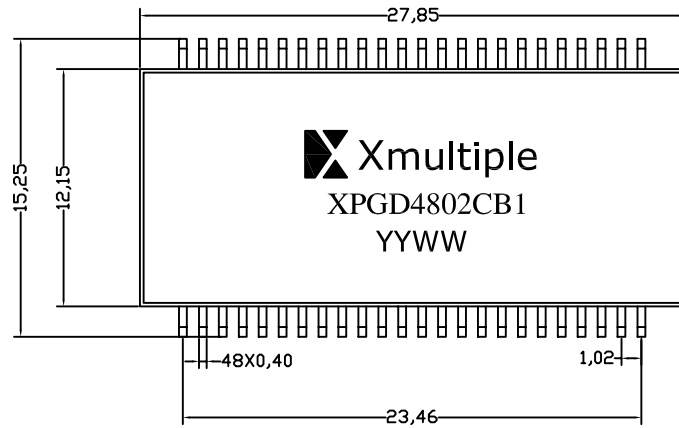
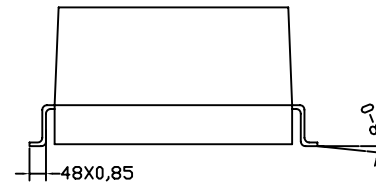
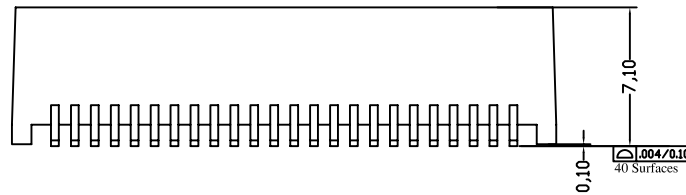


1. MECHANICAL DIMENSIONS :

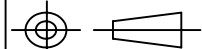


SUGGESTED PAD LAYOUT

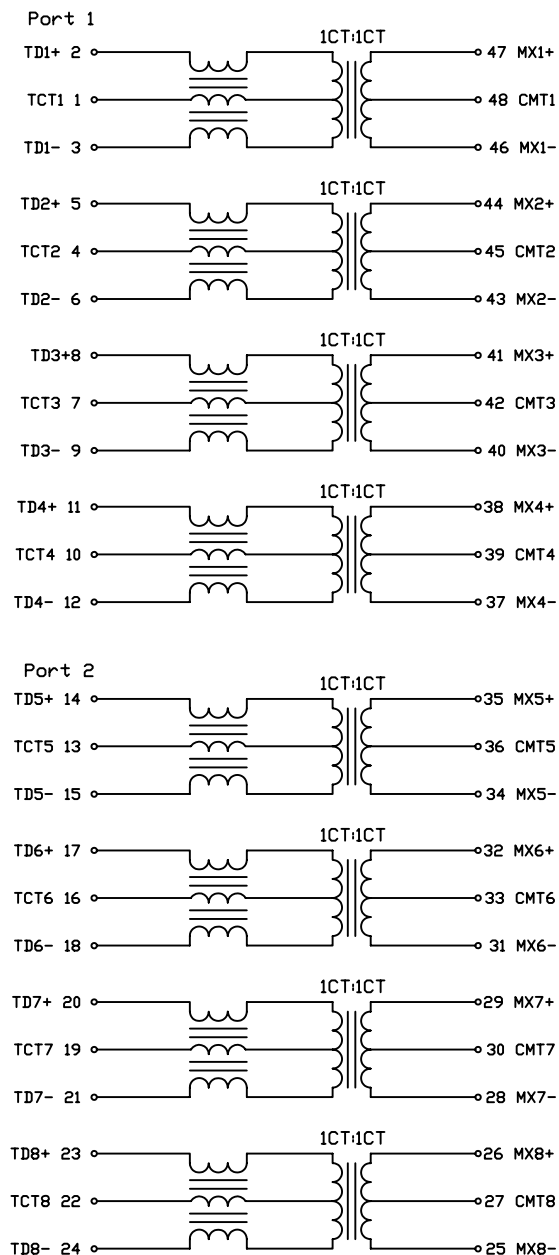


RoHS Compliant

Dimensions: Inches/mm
Unless otherwise specified, all tolerances are $\pm 0,25$

X MULTIPLE		CONNECTING THE INFORMATION AGE	
XMULTIPLE ASIA 4F, No. 347, Yang Guang St., Neihu, Taipei, Taiwan 11475		XMULTIPLE USA 1420 Los Angeles Ave., Suite G, Simi Valley, CA 93065	
THIS DRAWING IS A CONTROLLED DOCUMENT.		G/NO:	
TITLE: 10/100/1000 Base-T Dual Port Surface Mount Magnetices For PoE		DWG NO: XTFZ-PGD4802CB1	
PART NO: XTFZ-PGD4802CB1		DRAWN: RUNES	
		UNIT	SHEET
		mm	1 of 2
		REV	DATE:
		01	Mar.04,08
		CHKD: JEFF	

2. SCHEMATIC :



3. ELECTRICAL CHARACTERISTICS :

TEST NOTES:(25±5 °C)

- TR:(100KHz,0.1V);
PINS:(2,3):(47,46);(5,6):(44,43)=1:1±3%
PINS:(8,9):(41,40);(11,12):(38,37)=1:1±3%
PINS:(14,15):(35,34);(17,18):(32,31)=1:1±3%
PINS:(20,21):(29,28);(23,24):(26,25)=1:1±3%
- LX:(100KHz,100mV,8mA, DC Bias)
PINS:(2,3),(5,6),(8,9),(11,12),(14,15),(17,18),(20,21),
(23,24)=350uH MIN
- DCR:
PINS:(2,3),(5,6),(8,9),(11,12),(14,15),(17,18),(20,21),
(23,24)=1.5 OHMS MAX
- HIPOT:
PINS: INPUT TO OUTPUT=1500VAC FOR 60 SECONDS
- INSERTION LOSS:
-1.1dB MAXIMUM AT 0.10MHz
-1.0dB MAXIMUM AT 100MHz
-2.0dB MAXIMUM AT 125MHz
- RETURN LOSS:
-18dB TYP AT 30MHz
-12dB TYP AT 60MHz
-12dB TYP AT 80MHz
-10dB TYP AT 100MHz
- CROSS TALK:
-43dB MIN AT 30MHz
-37dB MIN AT 60MHz
-33dB MIN AT 100MHz

RoHS Compliant

				X MULTIPLE ASIA 4F, No. 347, Yang Guang St., Neihu, Taipei, Taiwan 11475
X MULTIPLE USA 1420 Los Angeles Ave., Suite G, Simi Valley, CA 93065		G/NO:		
THIS DRAWING IS A CONTROLLED DOCUMENT.				DWG NO: XTFZ-PGD4802CB1
TITLE: 10/100/1000 Base-T Dual Port Surface Mount Magnetics For PoE			DRAWN: RUNES	
PART NO: XTFZ-PGD4802CB1			CHKD: JEFF	
	UNIT mm	SHEET 2 of 2	REV 01	
DATE: Mar.04,08				