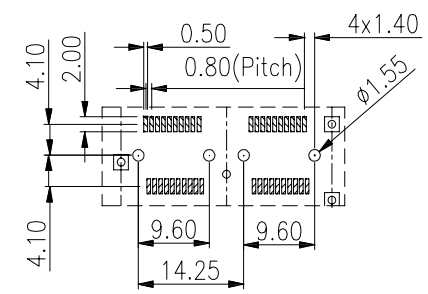
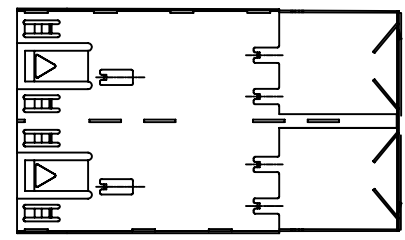
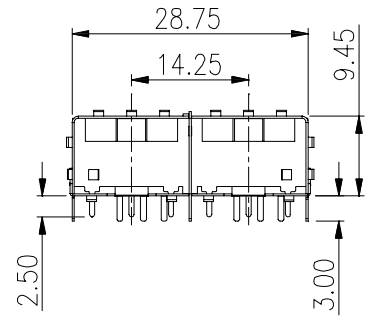
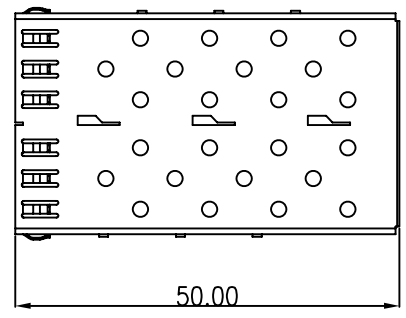
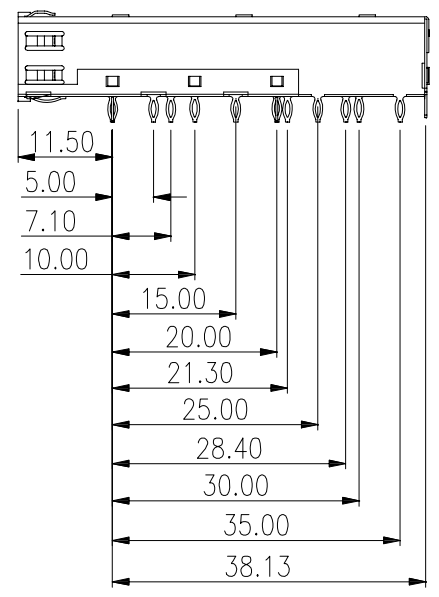
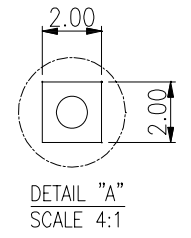
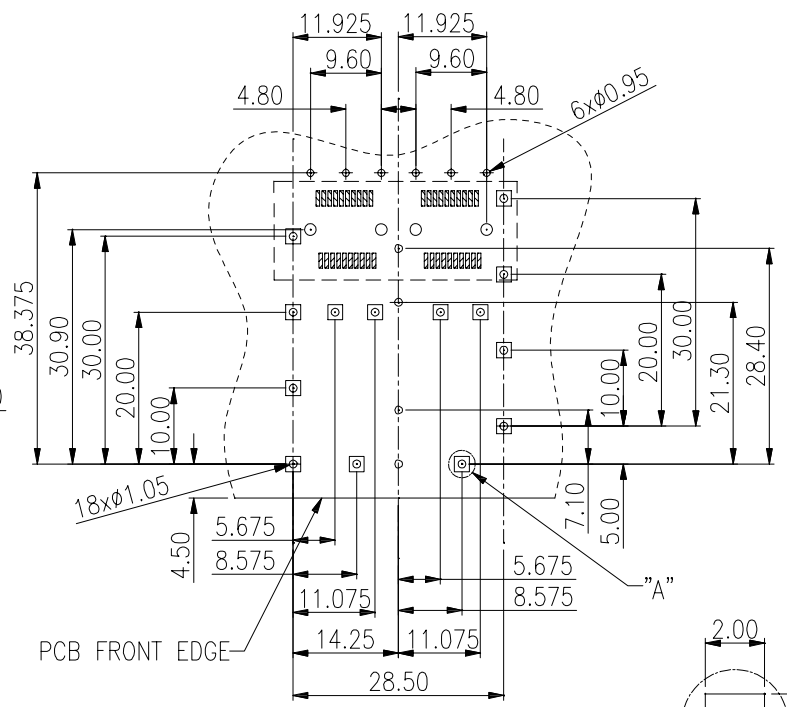


REVISION RECORD				
REV	ECO	DESCRIPTION	DRFT	CHKD



CONNECTOR LAYOUT



- NOTE:
- | | | |
|--------------------|--------------|----------------|
| 1. DESCRIPTION | MATERIAL | PLATING |
| 01 SFP TOP CAGE | COPPER ALLOY | NICKEL PLATING |
| 02 SFP BOTTOM CAGE | COPPER ALLOY | NICKEL PLATING |
2. TEMPERATURE:
 OPERATION: -40°C~ +85°C
 STORAGE: -40°C~ +85°C
3. RoHS COMPLIANT
4. PART NUMBER : XSFP012-L

DETACHED LISTS	MM (INCH)	DFTO ANDY	DATE 06/16/09	Xmultiple Technologies Inc.	
	TOLERANCES EXCEPT AS NOTED	CHKD	DATE		
	MM	APPVL	DATE	TITLE	
	.0 ±0.20 ±	MATERIAL :			
.00 ±0.15 ±	ANGLES ±	QT'Y :	DRAWING NO. SFP-012		
.000 ±0.075 ±	THIRD ANGLE PROJECTION	FINISH :			/PART NO. SEE NOTE
		SCALE :	DO NOT SCALE DRAWING	SHEET X	

Xmultiple Technologies Inc.

TITLE
SFP CAGE 1x2 PORT

DRAWING NO. SFP-012
 /PART NO. SEE NOTE
 SIZE A3
 REV 0