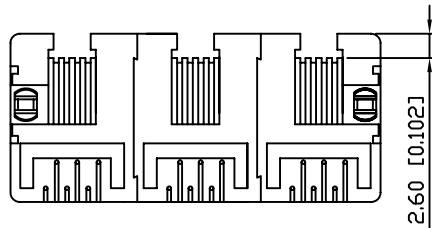


SUGGESTED PCB LAYOUT
TOP VIEW
DIMENSIONAL TOLERANCE: .XX ±0.08[0.003]

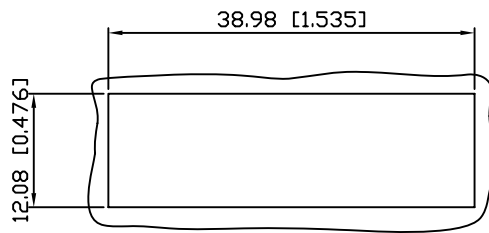


XRJK-U-03-6-2-0-6F4-JU

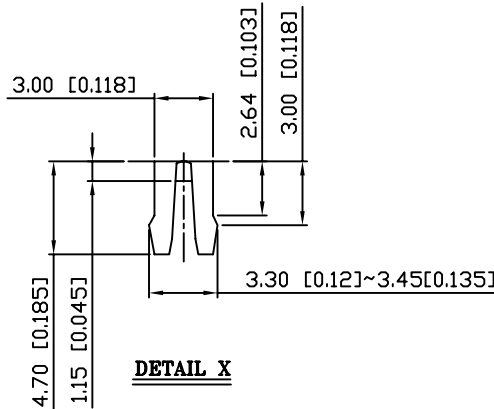
K-Latch Down [Thru Hole]
 Shielded Plating Type [Unshielded]
 NO. OF PORTS
 NO. OF POSITION
 NO. OF CONTACT
 LED COLOR OPTION
 SERIAL NUMBER
 RUNNING CODE
 CONTACT GOLD PLATING OPTION
 CUSTOMER CODE

NOTES :

- MATERIALS:
HOUSING: PBT POLYESTER UL94V-0
MIXED GLASS FIBER.
STANDARD COLOR-BLACK
CONTACTS: 0.45mm DIAMETER PHOS-BRONZE
PLATED WITH 6u" HARD GOLD.
- OPERATING TEMPERATURE: -40°C~+85°C
- CAVITY CONFORMS TO FCC RULES AND REGULATIONS
PART 68, SUBPART F.
- UNSPECIFIED TOLERANCE: .XX ±0.25
.X ±0.30



RECOMMENDED
PANEL CUTOUT DIMENSION



DETAIL X

RoHS Compliant

X MULTIPLE		THE INFORMATION AGE	
XMULTIPLE ASIA 4F, No. 347, Yang Guang St., Neihu, Taipei, Taiwan 11475		XMULTIPLE USA 1420 Los Angeles Ave., Suite G, Simi Valley, CA 93065	
THIS DRAWING IS A CONTROLLED DOCUMENT.		G/NO:	9697
TITLE: RJ11 Connectors, w/D LED, 6P,2C, Unshielded, Thru-Hole		DWG NO:	XRJK-U-03-6-2-0-6F4-JU
PART NO: XRJK-U-03-6-2-0-6F4-JU		DRAWN:	TOM
		CHKD:	JEFF
UNIT	SHEET	REV	DATE:
mm[inch]	1 of 1	01	Feb.01,08