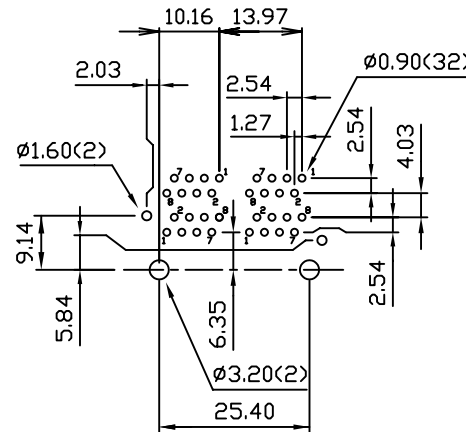
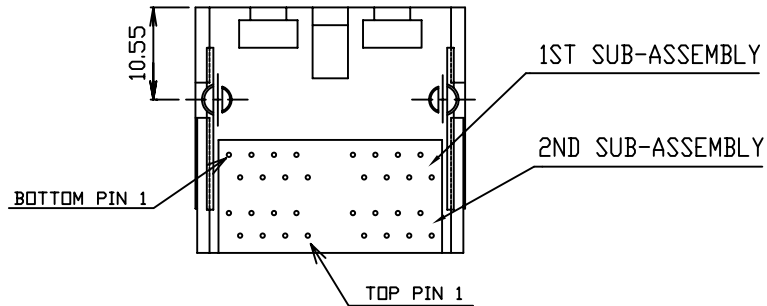
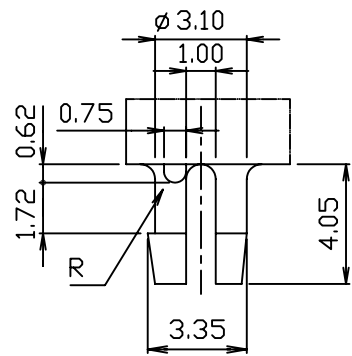
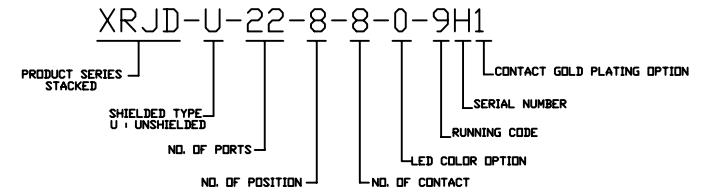


NOTES:

1. MATERIAL: HOUSING-PBT POLYESTER UL-94V-0 MIXED GLASS FIBER. STANDARD COLOR-BLACK CONTACTS-0.35mm THICK PHOS-BRONZE PLATED WITH 15u" GOLD AND GOLD FLASH IN SOLDER AREA. INNER SHIELD-0.25mm THICK COPPER ALLOY, PLATED WITH NICKEL.
2. CAVITY CONFORMS TO FCC RULES AND REGULATIONS PART 68,SUBPART F.
3. UNSPECIFIED TOLERANCE: .XX ±0.25[0.010] .X ±0.30[0.012]



SUGGESTED PCB LAYOUT
TOP VIEW



DETAIL Y

RoHS Compliant

X MULTIPLE		THE INFORMATION AGE	
XMULTIPLE ASIA 4F, No. 347, Yang Guang St., Neihu Chiu, Taipei, Taiwan 11475		XMULTIPLE USA 1420 Los Angeles Ave., Suite G, Simi Valley, CA 93065	
THIS DRAWING IS A CONTROLLED DOCUMENT.		G/NO:	9733
TITLE: Stacked RJ45, Connectors, w/O LED, 8P,8C, Unshielded, Thru Hole, w/INNER SHIELD.		DWG NO:	XRJD-U-22-8-8-0-9H1
PART NO: XRJD-U-22-8-8-0-9H1		DRAWN:	RUNES
		CHKD:	JEFF
UNIT: mm[inch]		SHEET:	1 of 1
SHEET: 1 of 1		REV:	01
DATE: Oct.05,06			