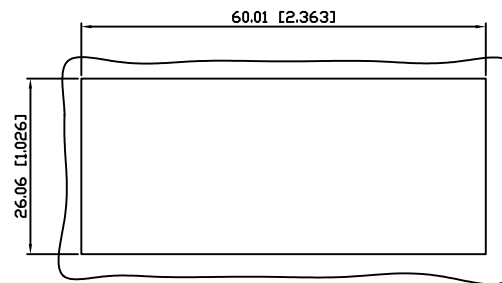
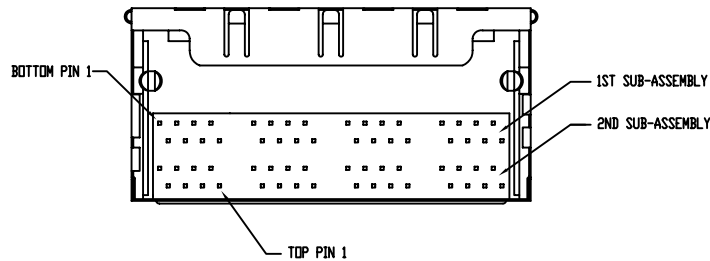
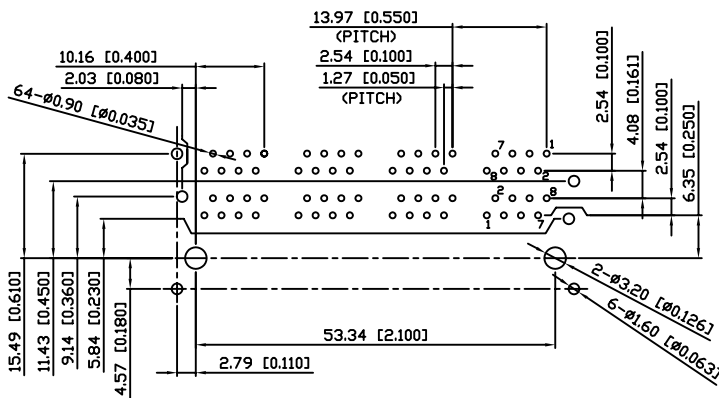
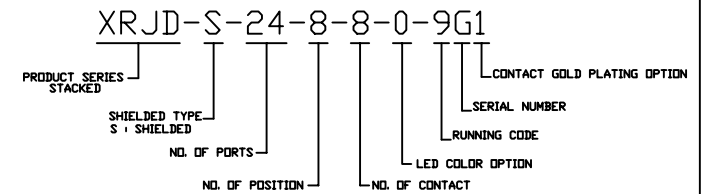


NOTES:

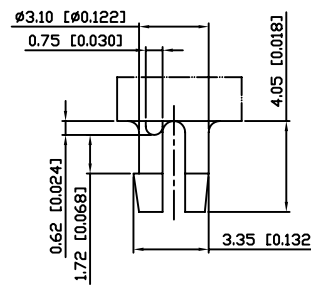
- MATERIALS:
HOUSING-PBT POLYESTER UL-94V-0
MIXED GLASS FIBER,
STANDARD COLOR-BLACK
CONTACTS-0.35mm THICK PHOS-BRONZE
PLATED WITH 15µ" GOLD AND
GOLD FLASH IN SOLDER AREA.
SHIELD-0.25mm THICK COPPER ALLOY,
PLATED WITH NICKEL.
- OPERATING TEMPERATURE: -40°C ~ +85°C
- CAVITY CONFORMS TO FCC RULES AND REGULATIONS
PART 68,SUBPART F.
- UNSPECIFIED TOLERANCE: .XX ±0.25[0.010]
.X ±0.30[0.012]



RECOMMENDED
PANEL CUTOUT DIMENSION



SUGGESTED PCB LAYOUT
TOP VIEW
DIMENSIONAL TOLERANCE: .XX ±0.08[0.003]



DETAIL Y

RoHS Compliant

X MULTIPLE		THE INFORMATION AGE	
MULTIPLE ASIA 4F, No. 347, Yang Guang St., Neihu Chiu, Taipei, Taiwan 11475		MULTIPLE USA 1420 Los Angeles Ave., Suite G, Simi Valley, CA 93065	
THIS DRAWING IS A CONTROLLED DOCUMENT. TITLE: Stacked RJ45 Connectors, W/O LED, 8P,8C, Shielded, Thru Hole.		G/NO: 9731	DWG NO: XRJD-S-24-8-8-0-9G1
PART NO: XRJD-S-24-8-8-0-9G1		DRAWN: RUNES	
		UNIT mm[inch]	REV 01
		SHEET 1 of 1	DATE: Dec.18,06
		CHECKED: JEFF	