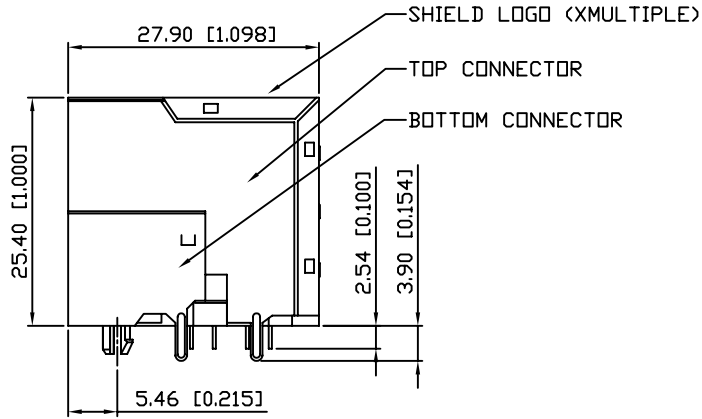


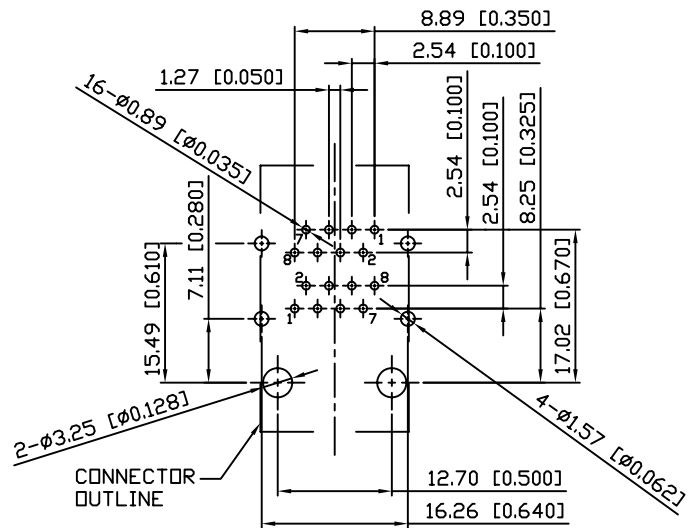
FRONT VIEW



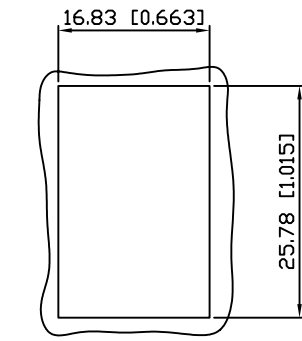
SIDE VIEW

NOTES:

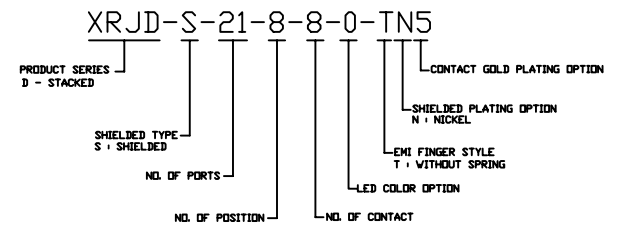
- MATERIALS:  
HOUSING: HIGH TEMP. THERMOPLASTIC, PBT, UL 94V-0, BLACK.  
CONTACTS: T=0.35 mm PHOSPHOR BORNZE, NICKEL UNDERPLATE ON ALL AREA, TIN ON TERMINATION END, HARD GOLD ON CONTACT AREA.  
SHIELD: T=0.25 mm COPPER ZINC ALLOY PLATED WITH NICKEL
- OPERATING TEMPERATURE: -40°C ~ +85°C
- JACK CAVITY CONFORMS TO FCC RULES AND REGULATIONS PART 68, SUBPART F
- UNSPECIFIED TOLERANCE: .XX ±0.25[0.010]  
.X ±0.30[0.012]



SUGGESTED PCB LAYOUT  
TOP VIEW  
DIMENSIONAL TOLERANCE: .XX ±0.08[0.003]



RECOMMENDED  
PANEL CUTOUT DIMENSION



RoHS Compliant

<b>XMULTIPLE</b>		THE INFORMATION AGE	
XMULTIPLE ASIA 4F, No. 347, Yang Guang St., Neihu, Taipei, Taiwan 11475		XMULTIPLE USA 1420 Los Angeles Ave., Suite G, Simi Valley, CA 93065	
THIS DRAWING IS A CONTROLLED DOCUMENT.		G/NO:	
TITLE: Stacked RJ45 Connectors, w/D LED, 8P,8C, Shielded, Thru Hole, 2 Piece Structure		DWG NO:	
PART NO: XRJD-S-21-8-8-0-TN5		XRJD-S-21-8-8-0-TN5 DRAWN:	
		IVAN CHKD:	
UNIT: mm[inch]		TARA DATE:	
SHEET: 1 of 1		01 DATE: Oct.07,09	
REV: 01			