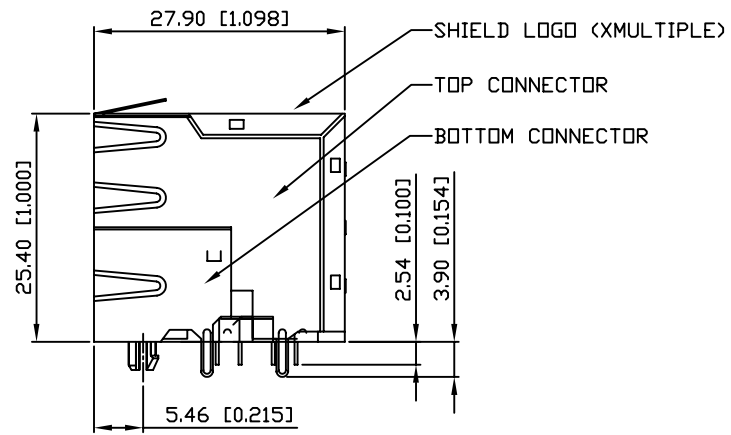
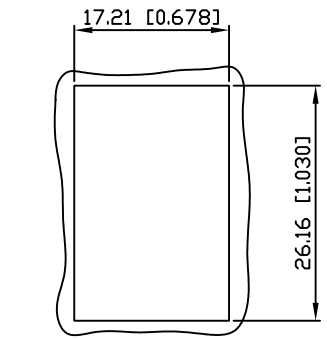


FRONT VIEW



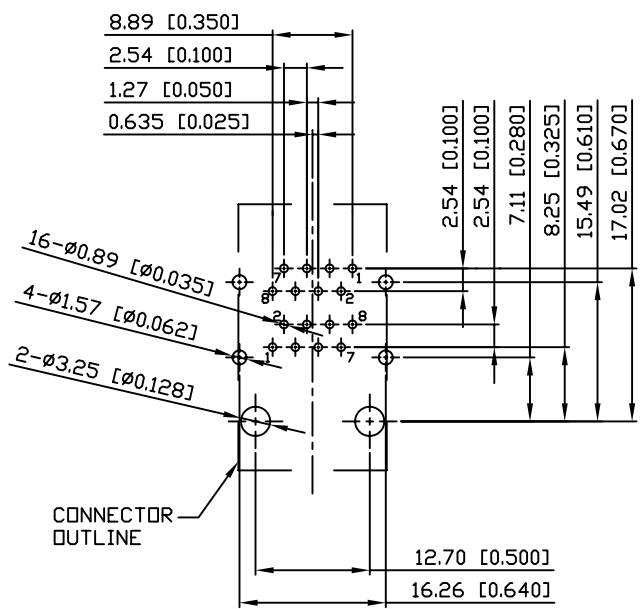
SIDE VIEW



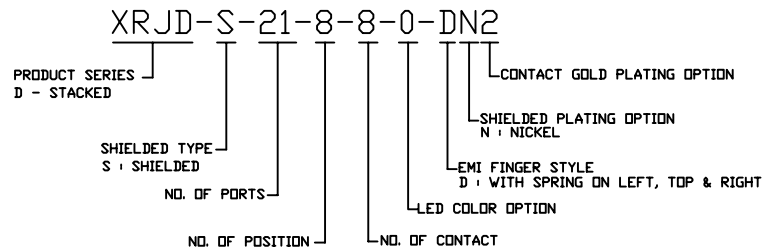
RECOMMENDED PANEL CUTOUT DIMENSION

NOTES:

- MATERIALS:  
HOUSING: HIGH TEMP. THERMOPLASTIC, PBT, UL 94V-0, BLACK.  
CONTACTS: T=0.35 mm PHOSPHOR BORNZE, 50u" NICKEL UNDERPLATE  
ON ALL AREA, 100u" TIN ON TERMINATION END,  
30u" GOLD ON CONTACT AREA.  
SHIELD: T=0.25 mm COPPER ZINC ALLOY PLATED WITH NICKEL
- OPERATING TEMPERATURE: -40°C ~ +85°C
- JACK CAVITY CONFORMS TO FCC RULES AND REGULATIONS PART 68, SUBPART F
- UNSPECIFIED TOLERANCE: .XX ±0.25[0.010]  
.X ±0.30[0.012]



SUGGESTED PCB LAYOUT  
TOP VIEW  
DIMENSIONAL TOLERANCE: .XX ±0.08[0.003]



RoHS Compliant

<b>X MULTIPLE</b>		THE INFORMATION AGE	
XMULTIPLE ASIA 4F, No. 347, Yang Guang St., Neihu, Taipei, Taiwan 11475		XMULTIPLE USA 1420 Los Angeles Ave., Suite G, Simi Valley, CA 93065	
THIS DRAWING IS A CONTROLLED DOCUMENT.		G/NO: DWG NO: XRJD-S-21-8-8-0-DN2	
TITLE: Stacked RJ45 Connectors, W/D LED, 8P,8C, Shielded, Thru Hole, 2 Piece Structure.		DRAWN: RUNES	
PART NO: XRJD-S-21-8-8-0-DN2		CHKD: JEFF	
		UNIT mm[inch]	SHEET 1 of 1
		REV A	DATE: Apr.27,06