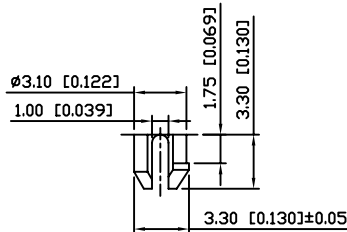
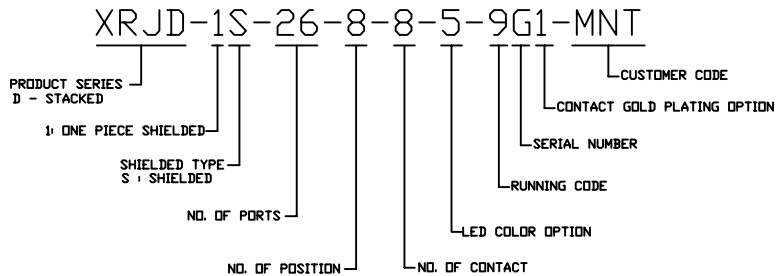


SUGGESTED PCB LAYOUT
TOP VIEW
DIMENSIONAL TOLERANCE: .XX ±0.08[0.003]

NOTES:

1. MATERIALS:
HOUSING: PBT POLYESTER UL94V-0 MIXED GLASS FIBER. STANDARD COLOR-BLACK.
CONTACTS: 0.35mm THICK PHOS-BRONZE PLATED WITH 15u" GOLD AND GOLD FLASH IN SOLDER AREA.
SHIELD: 0.20mm THICK COPPER ALLOY, PLATED WITH NICKEL.
2. OPERATING TEMPERATURE: -40°C ~ +85°C
3. JACK CAVITY CONFORMS TO FCC RULES AND REGULATIONS PART 68, SUBPART F
4. UNSPECIFIED TOLERANCE: .XX ±0.25[0.010]
.X ±0.30[0.012]

RoHS Compliant



DETAIL X

		THE INFORMATION AGE		
		G/NO:	9839	
MULTIPLE ASIA 4F, No. 347, Yang Guang St., Neihu, Taipei, Taiwan 11475		MULTIPLE USA 1420 Los Angeles Ave., Suite G, Simi Valley, CA 93065		DWG NO: XRJD-1S-26-8-8-5-9G1-MNT
THIS DRAWING IS A CONTROLLED DOCUMENT.				
TITLE:		Stacked RJ45 Connectors, w/LED, 8P,8C, Shielded, Thru Hole		
PART NO:		XRJD-1S-26-8-8-5-9G1-MNT		
		UNIT	SHEET	REV
		mm[inch]	1 of 1	01
DATE:				JEFF
DATE:				Sep.17,07