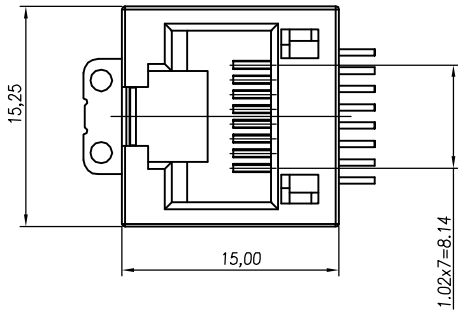


1 2 3 4 5 6 7 8

A

A



B

B

Electrical:

1. Voltage Rating: 125 Vac Rms.
2. Current Rating: 1.5 Amp.
3. Contact Resistance: 40 Milliohms Max.
4. Insulation Resistance: 1000 Megohms Min @ 500 Vdc.
5. Dielectric Strength: 1000 Vac Rms 60Hz, 1Min.

Mechanical:

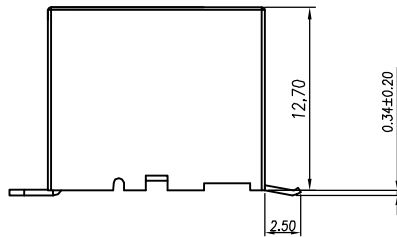
1. Operating: 750 Cycles Min.

Environmental:

1. Storage: -40°C To +85°C.
 2. Operation: -20°C To +75°C.
 3. IR Reflow Soldering Temperature: 255°C To 265°C (5~10 Seconds).
- Mates With Modular Plug Conforming To FCC Part 68, Subpart F.

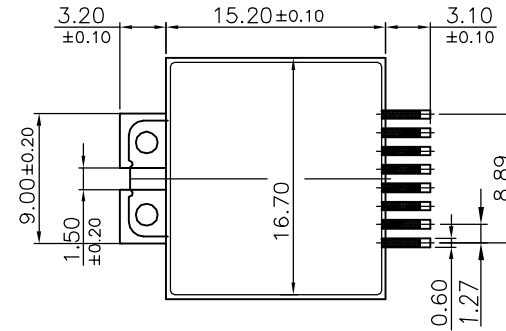
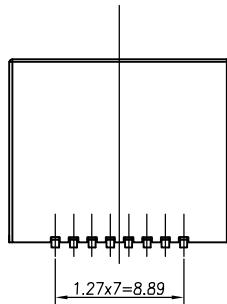
C

C



D

D



SUGGESTED PCB LAYOUT
(TOP VIEW)
DIMENSIONAL TOLERANCE: .XX ±0.05

E

E

RoHS Compliant

MATERIALS:

- PLASTIC HOUSING: HIGH TEMP THERMOPLASTIC
FLAMMABILITY RATING UL 94V-0.
- CONTACTS: PHOSPHOR BRONZE
- PLATING: GOLD PLATING OVER NICKEL IN CONTACT.
TIN PLATING OVER NICKEL IN SOLDER AREA.
- SOLDER PAD: BRASS WITH TIN PLATING OVER NICKEL.

F

F

PART NO:
XMS-01-0-0A2-1P0
O:W/O LED

X MULTIPLE			CONNECTING THE INFORMATION AGE		
Xmultiple Technologies, Inc. 1060 Los Angeles Avenue Simi Valley, CA 93065			G/NO:		
THIS DRAWING IS A CONTROLLED DOCUMENT.			DWG NO: XMS-01-0-0A2-1P0		
TITLE: TOP ENTRY PCB SMT JACK			DRAWN: Ivy Li		
PART NO: XMS-01-0-0A2-1P0			CHKD: Michael		
		UNIT mm[inch]	SHEET 1 of 1	REV 01	DATE: 2012.01.12

1 2 3 4 5 6 7 8