

SPECIFICATION FOR APPROVAL

PART NO.: XMM-9758-1D11F0A-226

PRODUCT DESCRIPTION.: 1*1 8P8C SIDE ENTRY JACK WITH SHIELDED

REV:A



Xmultiple

MARKETING GROUP	R&D GROUP	QA GROUP
ISSUED BY	CHECKED BY	QA INSPECTION
Wu Chunxi	Liu Ting	Cheng Xubo

CUSTOMER: _____

CUSTOMER PART NO.: _____

SAMPLE Q'TY: _____

CUSTOMER

CUSTOMER APPROVAL:

APPROVAL

CONCESSIONARY

REJECTED

ISSUED BY	CHECKED BY	APPROVED BY

COMMENTS:

SPECIFICATION FOR APPROVAL

CUSTOMER PART NO.:

XMH- PART NO.: XMM-9758-1D11F0A-226

PRODUCT DESCRIPTION.: 1*1 8P8C SIDE ENTRY JACK WITH SHIELDED



TEMP(°C):25

HUM(%):65 RH

REV:A

CONTENT

	TOTAL 7 PAGES
1. COVER PAGE	PAGE 1 OF 7
2. CONTENT	PAGE 2 OF 7
3. REVISION CHANGE RECORD	PAGE 3 OF 7
4. SPECIFICATION AND PERFORMANCE	PAGE 4 OF 7
5. MECHANICAL DIMENSION AND LABEL	PAGE 5 OF 7
6. RECOMMENDED PCB LAYOUT	PAGE 6 OF 7
7. PACKAGE	PAGE 7 OF 7

SPECIFICATION FOR APPROVAL

CUSTOMER PART NO.:

XMH- PART NO.: XMM-9758-1D11F0A-226

PRODUCT DESCRIPTION.: 1*1 8P8C SIDE ENTRY JACK WITH SHIELDED



TEMP(°C):25

HUM(%):65 RH

REV:A

4. SPECIFICATION AND PERFORMANCE

4-1 Scope

This specification covers the requirements for product performance, tests and quality assurance provisions for TRANSFORMER JACK

4-2 Applicable document

The following documents form a part of this specification to the extent specified herein. In the event of conflict between the requirements of this specification and the product drawing shall take precedence

4-3 Requirements

4-3-1 Design and construction

Product shall be of the design, construction and physical dimensions specified on the applicable product drawing
Complies with IEEE standards and all 10/100/1000 Ethernet

4-3-2 Materials and finish

Housing:	Glass filed polyester UL94V-0,Pantone Black
Contact:	Phosphor Bronze 0.46mm ROUND PIN
Plating:	6U" gold plating over nickel
Shielded:	0.20mm thickness copper alloy with nickel plated
PCB retention fre-solder:	1LB min.
PCB retention post-solder:	10 LBS min.
Tails:	150U"~200U" Tin-Lead min. over 30U" ~50U" nickel(RoHS6)

4-3-3 Mechanical characteristics:

Durability:750(modular jack) insertion/plug dimension cycles at min. rate of 120 cycles per minute

4-3-4 Electrical

Contact resistance:	30 milliohms max.
Insulation resistance:	500 megohms min.@500 VDC.
Dielectric strength:	1500 VAC RMS 60Hz,1min.

4-3-5 Environmental:

Operating temperature:	0°C~+70°C
Storage temperature:	-40°C~+85°C

Mates with modular plug conforming to FCC pact 68 subpart F.

4-3-6 Applicable printed circuit board

The product is designed to meet the electrical, mechanical and environmental performance requirements specified in product drawing

SPECIFICATION FOR APPROVAL

CUSTOMER PART NO.:

XMH- PART NO.: XMM-9758-1D11F0A-226

PRODUCT DESCRIPTION.: 1*1 8P8C SIDE ENTRY JACK WITH SHIELDED



TEMP(°C):25

HUM(%):65 RH

REV:A

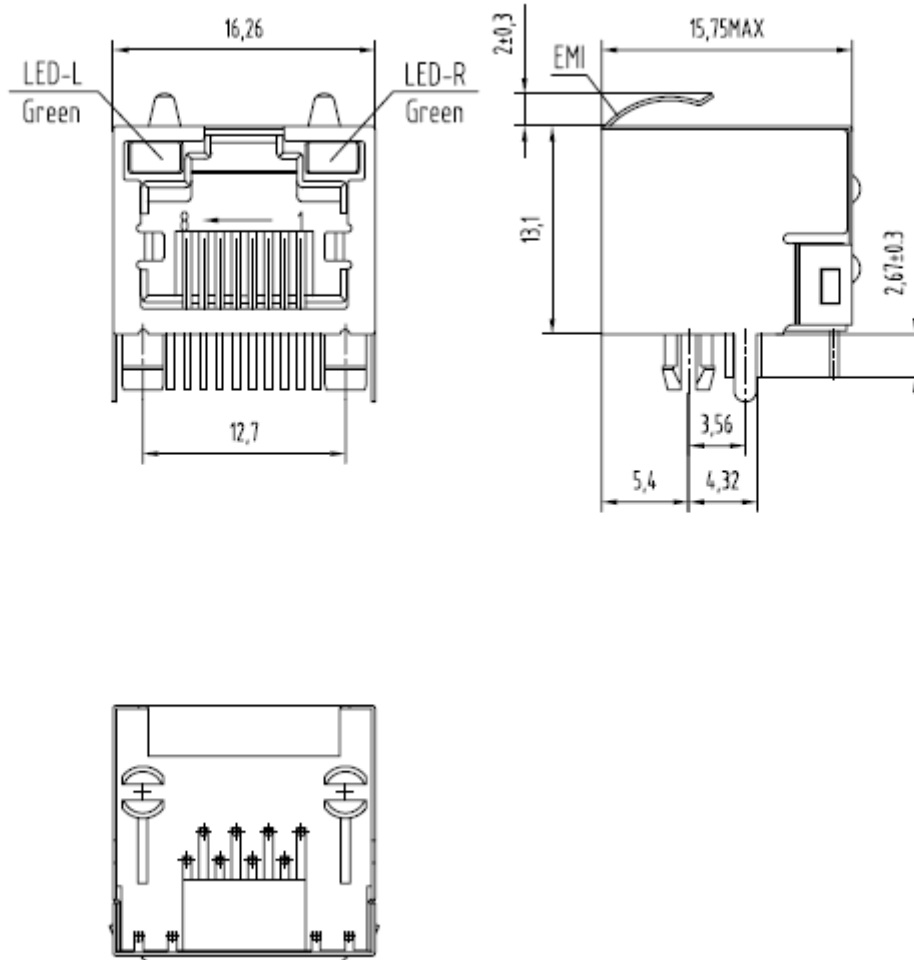
TOLERANCE(mm):

.0 ± 0.20

.00 ± 0.15

.000 ± 0.075

5. MECHANICAL DIMENSION AND LABEL



SPECIFICATION FOR APPROVAL

CUSTOMER PART NO.:

XMH- PART NO.: XMM-9758-1D11F0A-226

PRODUCT DESCRIPTION.: 1*1 8P8C SIDE ENTRY JACK WITH SHIELDED

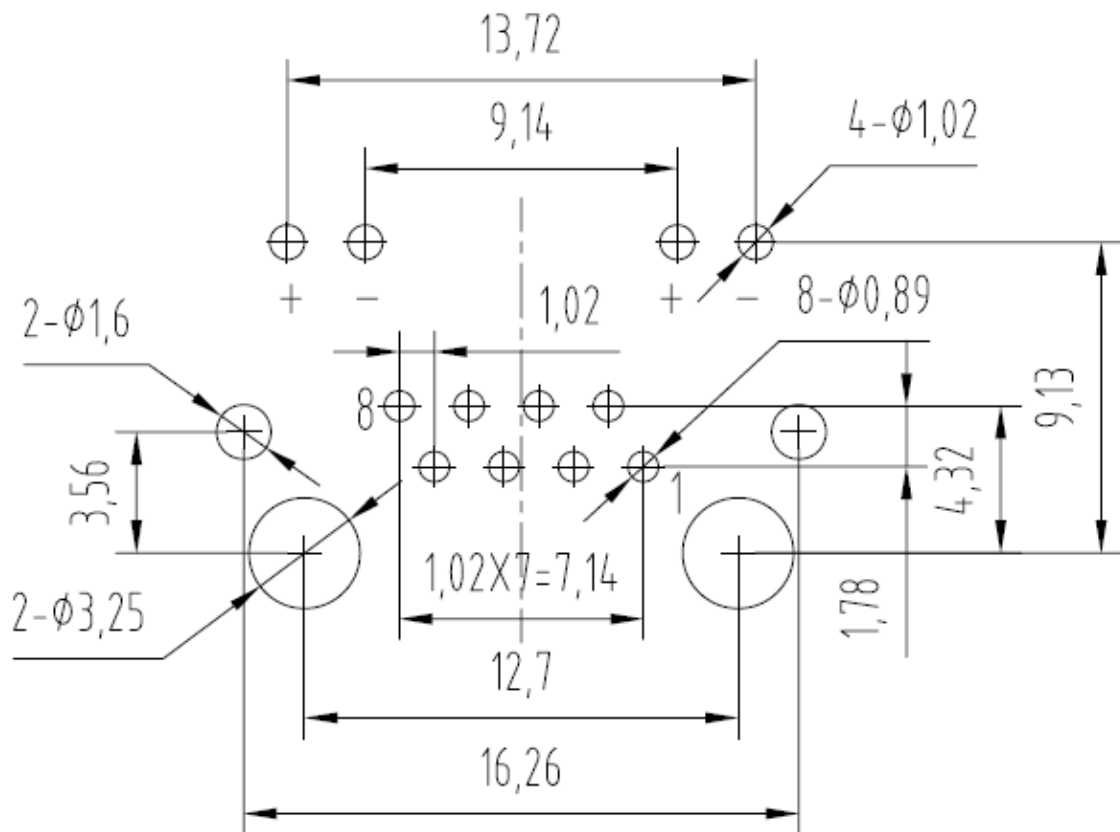


TEMP(°C):25

HUM(%):65 RH

REV:A

6. RECOMMENDED PCB LAYOUT: UNIT: (mm)



COMPONENT SIDE VIEW

SPECIFICATION FOR APPROVAL

CUSTOMER PART NO.:

XMH- PART NO.: XMM-9758-1D11F0A-226

PRODUCT DESCRIPTION.: 1*1 8P8C SIDE ENTRY JACK WITH SHIELDED



TEMP(°C):25

HUM(%):65 RH

REV:A

11. PACKAGE

50 PCS/TRAY
2250 PCS/BOX

