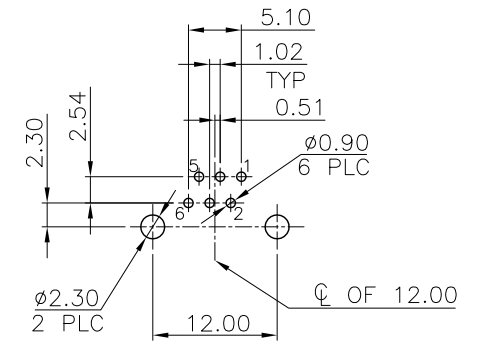
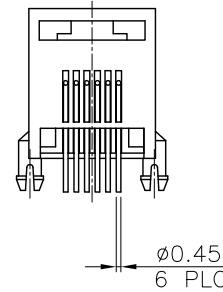
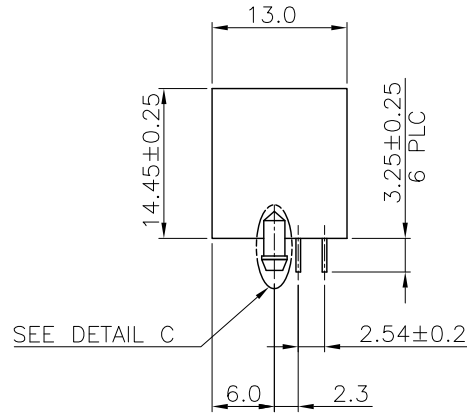
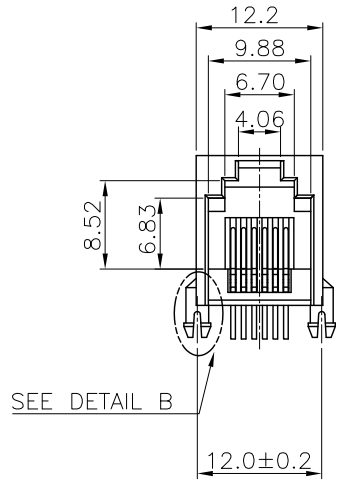


RoHS Compliance

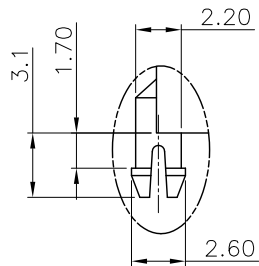
NOTE:

CAVITY CONFIRMS TO FCC RULES AND REGULATIONS PART 68, SUBPART F.

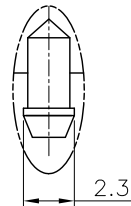
1. MATERIAL:
HOUSING: PBT OR PA46 OR PA9T, WITH GLASS FIBER,
UL 94V-0, STANDARD COLOR-GRAY.
CONTACTS: PHOSPHOR BRONZE.
2. FINISH:
CONTACTS: 0.381 μm [15 μ''] GOLD PLATED ON ENTIRE CONTACT,
1.27 μm [50 μ''] MIN. NICKEL UNDERPLATED
ALL OVER.



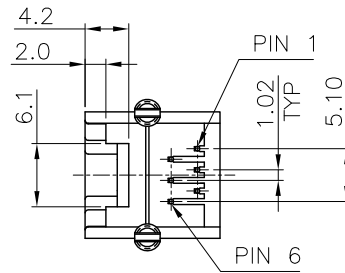
RECOMMENDED PCB LAYOUT
RECOMMENDED PCB THICKNESS: 1.6mm
TOLERANCE: ±0.05 (TOP VIEW)



DETAIL B
(SCALE 2:1)



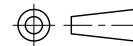
DETAIL C
(SCALE 2:1)



THIS DRAWING IS A CONTROLLED DOCUMENT.
DO NOT SCALE DRAWING.

DIMENSIONS:
MM

TOLERANCES UNLESS
OTHERWISE SPECIFIED:



THIRD ANGLE PROJECTION

0 PLC ± -
1 PLC ± 0.25
2 PLC ± 0.13
3 PLC ± 0.05
ANGLES ± -

MATERIAL

SEE NOTES

FINISH

SEE NOTES

XMULTIPLE

TITLE
6POSITION, MINI LOW PROFILE,
SIDE ENTRY PCB JACK

LTR	DESCRIPTION	DATE	APVD
REVISIONS			

DWN	<i>A.HUANG</i>	DATE	AUG-10-2010
CHK	<i>M.CHANG</i>	DATE	AUG-10-2010
APVD	<i>W.J.YANG</i>	DATE	AUG-11-2010

SIZE	A3	CAUSE CODE	-	DRAWING NO	XMK-9612-6611-T01
WEIGHT	-	GRAMS	Ref.	REV	-
				SHEET	1