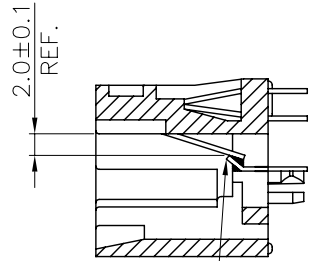
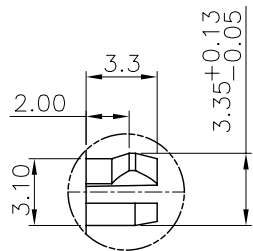
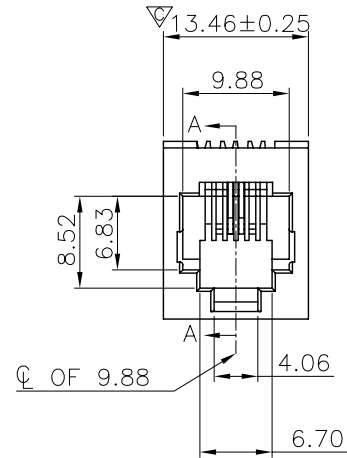
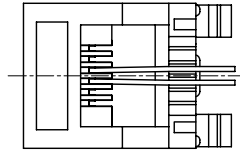


RoHS Compliance

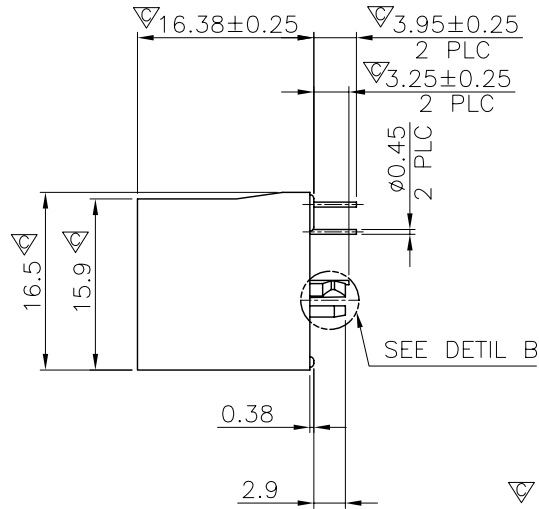


RJ45 CONTACT AND BRIDGE CONTACT MUST BE CONTACT

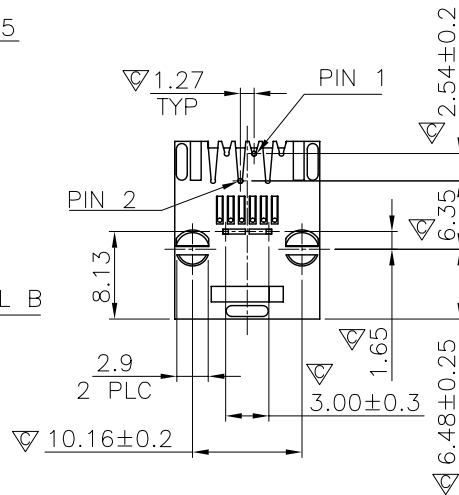
SECTION A-A



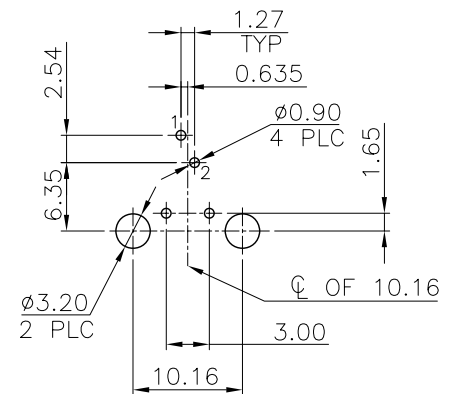
DETAIL B (SCALE 2:1)



SEE DETIL B



3. "▽" SHOWS QIP INSPECTION POINT.



RECOMMENDED PCB THICKNESS: 1.6mm
TOLERANCE: ±0.05 (TOP VIEW)

NOTE:

CAVITY CONFIRMS TO FCC RULES AND REGULATIONS PART 68, SUBPART F.

1. MATERIAL:

HOUSING: PBT, WITH GLASS FIBER,
UL 94V-0, STANDARD COLOR-BLACK.
CONTACTS: PHOSPHOR BRONZE.
SHORTIG BUSS CONTACT: PHOSPHOR BRONZE.

2. FINISH:

CONTACTS: 1.27μm [50μ"] GOLD PLATED ON ENTIRE CONTACT,
1.27μm [50μ"] MIN. NICKEL UNDERPLATED ALL OVER.
SHORTING BUSS CONTACT:
1.27μm [50μ"] GOLD PLATED ON ENTIRE CONTACT,
1.27μm [50μ"] MIN. NICKEL UNDERPLATED ALL OVER.

THIS DRAWING IS A CONTROLLED DOCUMENT.
DO NOT SCALE DRAWING.

DIMENSIONS: MM TOLERANCES UNLESS OTHERWISE SPECIFIED:

0 PLC	± -
1 PLC	± 0.25
2 PLC	± 0.13
3 PLC	± 0.05
ANGLES	± -

THIRD ANGLE PROJECTION

MATERIAL SEE NOTES FINISH SEE NOTES

DWN *A.HUANG* DATE AUG-10-2010

CHK *M.CHANG* AUG-10-2010

APVD *W.J.YANG* AUG-11-2010

XMULTIPLE

TITLE
6POSITION, 180°, SPLIT PEGS,
SHORTING BUSS, TOP ENTRY PCB JACK

SIZE CAUGE CODE DRAWING NO

A4 - XMK-9611-6213-B

WEIGHT - GRAMS Ref. REV 7 SHEET 1

LTR	DESCRIPTION	DATE	APVD
REVISIONS			