

# RoHS Compliance

NOTE:

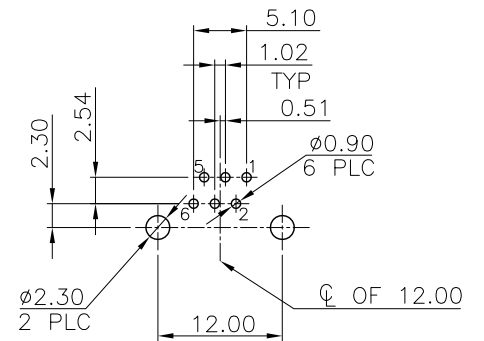
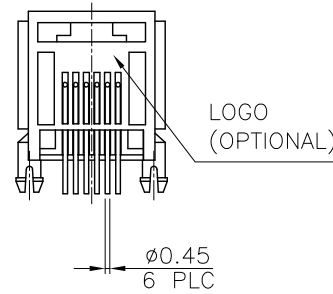
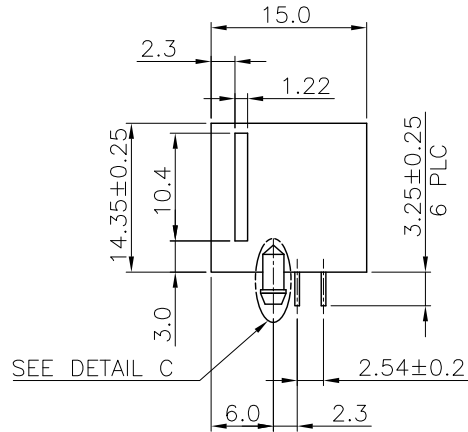
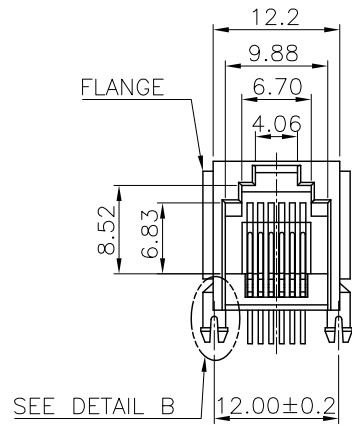
CAVITY CONFIRMS TO FCC RULES AND REGULATIONS PART 68, SUBPART F.

1. MATERIAL:

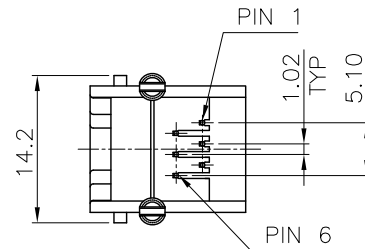
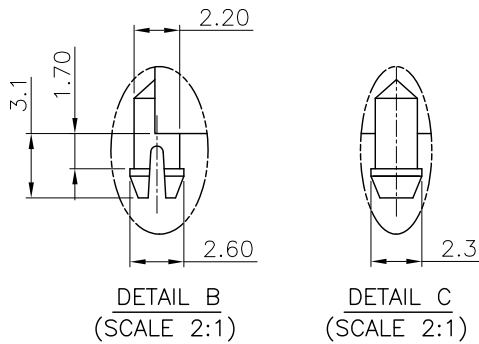
HOUSING: PBT OR PA46, WITH GLASS FIBER,  
UL 94V-0, STANDARD COLOR-GRAY.  
CONTACTS: PHOSPHOR BRONZE.

2. FINISH:

CONTACTS:  $0.381\mu\text{m}$  [ $15\mu''$ ] GOLD PLATED ON ENTIRE CONTACT,  
 $1.27\mu\text{m}$  [ $50\mu''$ ] MIN. NICKEL UNDERPLATED  
ALL OVER.



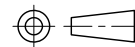
RECOMMENDED PCB LAYOUT  
RECOMMENDED PCB THICKNESS: 1.6mm  
TOLERANCE:  $\pm 0.05$  (TOP VIEW)



THIS DRAWING IS A CONTROLLED DOCUMENT.  
DO NOT SCALE DRAWING.

DIMENSIONS:  
MM

TOLERANCES UNLESS  
OTHERWISE SPECIFIED:



THIRD ANGLE PROJECTION

0 PLC  $\pm -$   
1 PLC  $\pm 0.25$   
2 PLC  $\pm 0.13$   
3 PLC  $\pm 0.05$   
ANGLES  $\pm -$

MATERIAL

SEE NOTES

FINISH

SEE NOTES

DWN

*A.HUANG*

DATE

AUG-10-2011

CHK

*M.CHANG*

DATE

AUG-10-2011

APVD

*W.J.YANG*

DATE

AUG-11-2011

# XMULTIPLE

TITLE

6POSITION, LOW PROFILE,  
SIDE ENTRY PCB JACK

LTR	DESCRIPTION	DATE	APVD
REVISIONS			

SIZE  
A3

CAUSE CODE

-

DRAWING NO

XMK-9606-6611-TO1

WEIGHT

- GRAMS Ref.

REV

-

SHEET 1