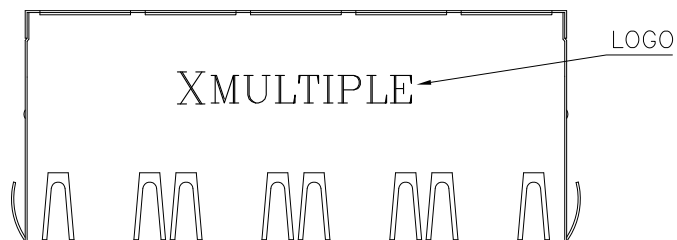


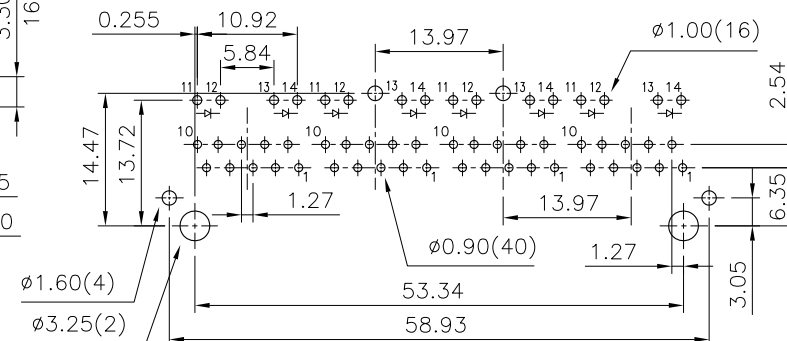
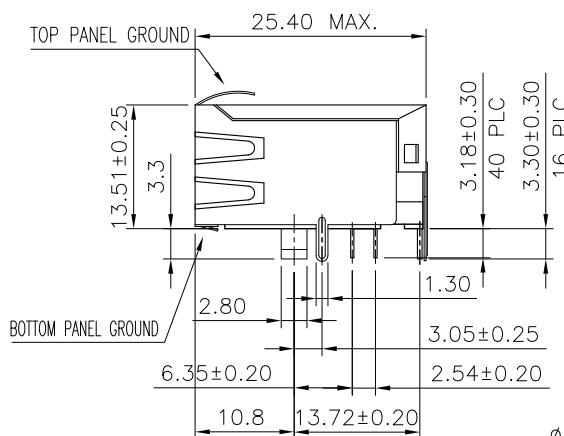
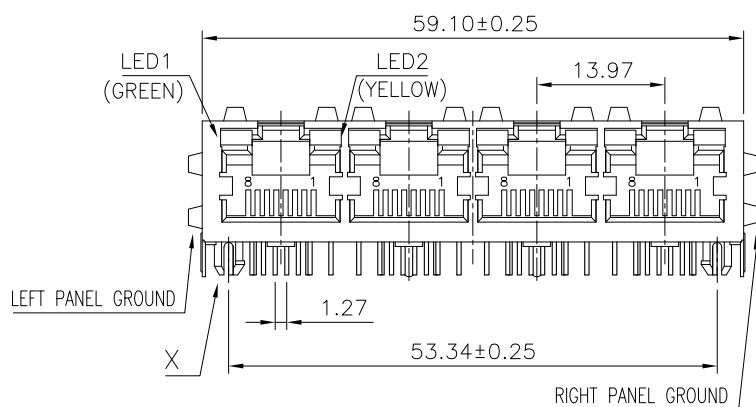
RoHS Compliance



MATERIAL:

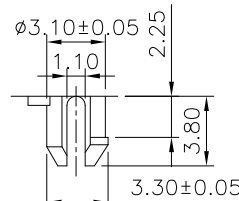
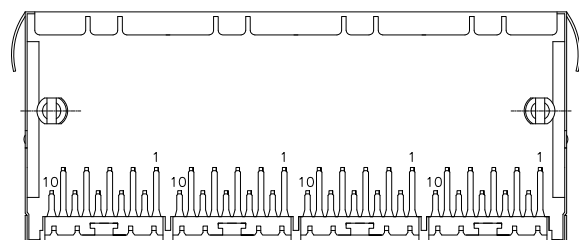
- HOUSING—PBT POLYESTER UL94V-0 MIXED GLASS FIBER. STANDARD COLOR—BLACK.
- CONTACTS—0.35mm THICK PHOS—BRONZE PLATED WITH 6u" HARD GOLD AND IN SOLDER AREA.
- SHIELD—0.20mm THICK COPPER ALLOY, PLATED WITH NICKEL.

CAVITY CONFIRMS TO FCC RULES AND REGULATIONS PART 68,SUBPART F.



PCB LAYOUT

Ref.



DETAIL X

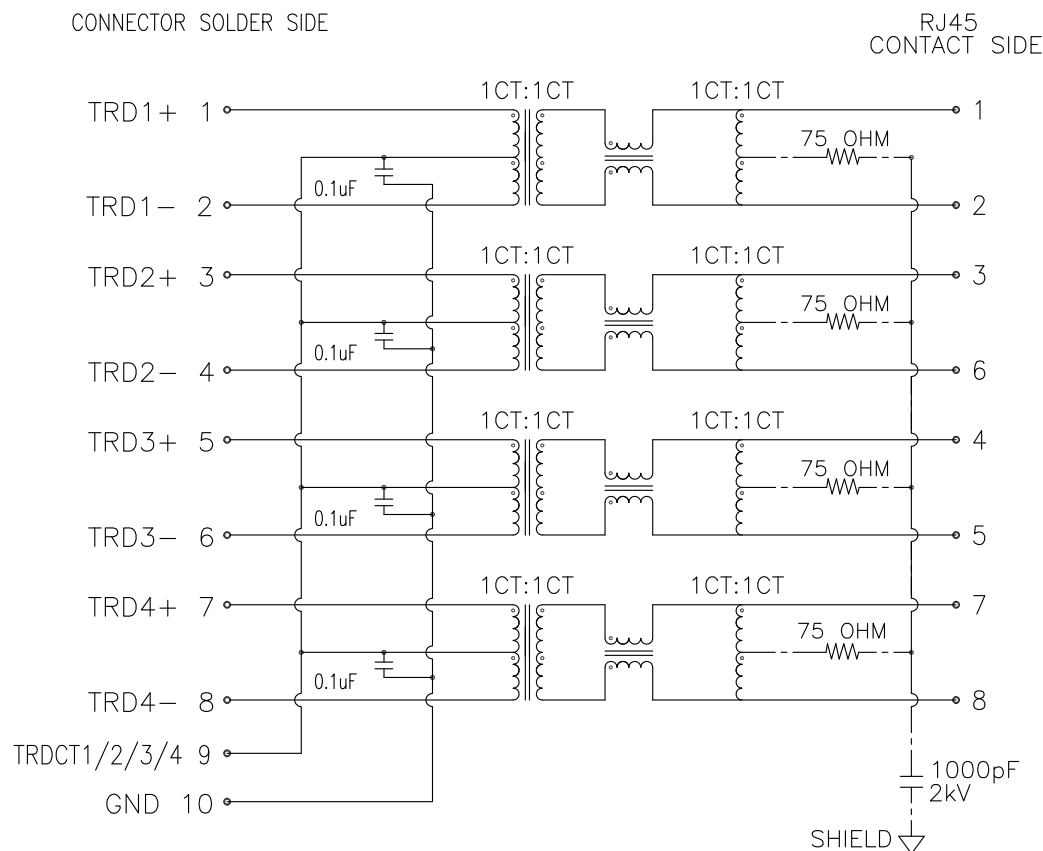
DO NOT SCALE DRAWING	TOLERANCES UNLESS OTHERWISE NOTED	INCH	MM	DR. <i>M.L.HUANG</i>	DATE DEC-19 '05	<h1>XMULTIPLE</h1>	
THIRD ANGLE PROJECTION	LINEAR $\frac{\text{MM}}{\text{INCH}}$	00 ± 000 ± 0000 ±	0.0 ± 0.30 0.00 ± 0.20 0.000 ± 0.10	CK'D <i>M.CHANG</i>	DEC-19 '05		TITLE 4 PORT, RJ45, WITH LED'S WITH TRANSFORMER, DIP TYPE, SIDE ENTRY.
MM INCH	ANGLE ± 0° 30'	RADII	+ 0.40 - 0.15	APP'D <i>W.J.YANG</i>	DEC-20 '05		SCALE SIZE DWG.NO. XMH-9808-81014-442D-L1T2-A

9808 TRANSFORMER TYPE 2

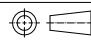
ELECTRICAL CHARACTERISTICS

TEST NOTES: (25°±5°C)

1. TR: (100KHz, 0.1V);
PINS:(1,2):(J1,J2)=1CT:1CT±3%;(3,4):(J3,J6)=1:1±3%
PINS:(5,6):(J4,J5)=1CT:1CT±3%;(7,8):(J7,J8)=1:1±3%
2. LX: (100KHz, 100mV, 8mA, DC Bias)
PINS: (J1,J2),(J3,J6),(J4,J5),(J7,J8)=350uH MINIMUM
3. DCR:
PINS: (1,2),(3,4),(5,6),(7,8)=1.5 OHMS MAXIMUM.
PINS: (J1,J2),(J3,J6),(J4,J5),(J7,J8)=1.2 OHMS MAXIMUM.
PINS: (J1-J2),(J2-J6),(J4-J7),(J5-J8)
=160 OHM MAXIMUM AND 140 OHMS MINIMUM
4. HIPOT:
PINS(1,2)TO(J1,J2):(3,4)TO(J3,J6)=1650VAC FOR 2 SECONDS
PINS(5,6)TO(J4,J5):(7,8)TO(J7,J8)=1600VAC FOR 2 SECONDS
5. CAPACIOR (1KHz,1V):
SHIELD TO (J1-J8)=1300pF MIXIMUM AND 700 pF MINIMUM
6. INSERTION LOSS:
-0.5dB MAXIMUM AT 1MHz TO 65MHz
-0.8dB MAXIMUM AT 65MHz TO 100MHz
-1.2dB MAXIMUM AT 100MHz TO 125MHz
7. RETURN LOSS:
-16dB MINIMUM AT 1MHz TO 30MHz
-13.5dB MINIMUM AT 30MHz TO 40MHz
-11.5dB MINIMUM AT 40MHz TO 50MHz
-10dB MINIMUM AT 50MHz TO 80MHz
8. CROSS TALK:
-35dB MINIMUM AT 30MHz TO 100MHz
9. COMMON TO DIFFERENTIALMODE REJECTION
-35dB MINIMUM AT 1MHz TO 100MHz
10. COMMON TO COMMON MODE REJECTION:
-30dB MINIMUM AT 1MHz TO 100MHz



CONNECTOR SCHEMATIC

DO NOT SCALE DRAWING	TOLERANCES UNLESS OTHERWISE NOTED	INCH	MM	DR. <i>M.L.HUANG</i>	DATE NOV-03 '03	<i>XMULTIPLE</i>				
 THIRD ANGLE PROJECTION	LINEAR MM INCH	00 ± .01 000 ± .005 0000 ± .002	0.0 ± 0.38 0.00 ± 0.25 0.000 ±	CK'D <i>M.CHANG</i>	NOV-03 '03	TITLE	TRANSFORMER TYPE 2 SPECIFICATION			
MM INCH	ANGLE ± 0° 30'	RADII	± 0.40 - 0.15	APP'D <i>W.J.YANG</i>	NOV-04 '03	SCALE	SIZE	DWG.NO. 9808 SERIES	REV. 1	SHEET 1