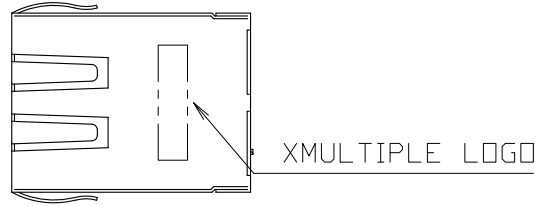
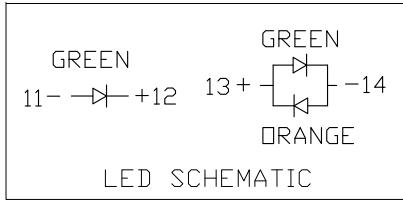


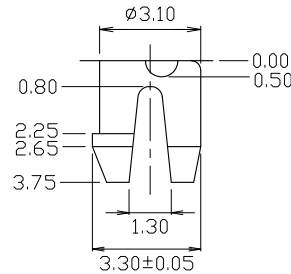
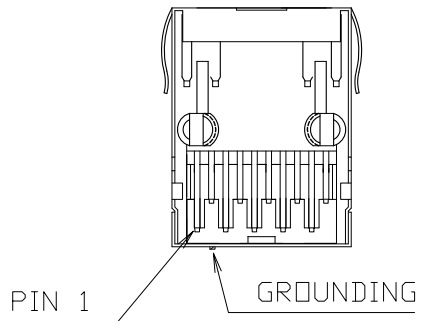
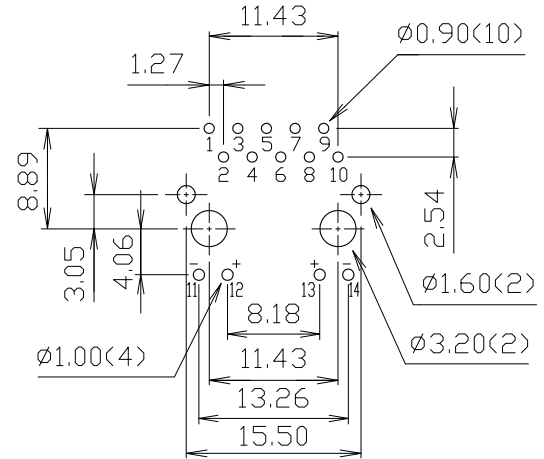
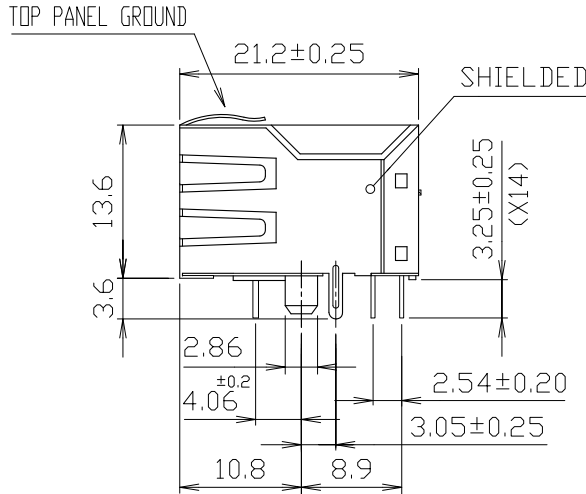
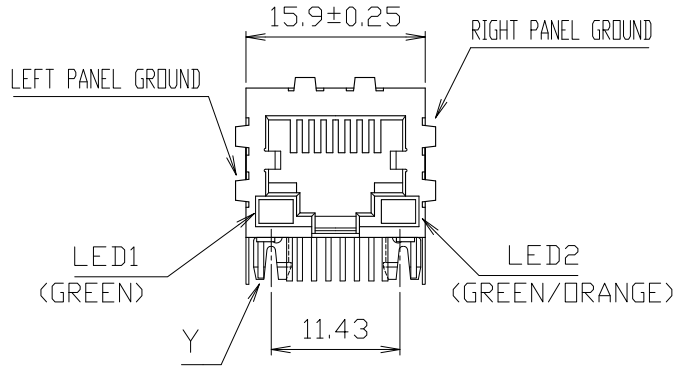
# RoHS Compliance



MATERIALS:

- HOUSING-DSM STANYL TE250F6 (NYLON-46)  
HEAT DEFLECTION TEMP.290°  
BLACK COLOR, UL94V-0.
- CONTACTS-0.35mm THICK PHOS-BRONZE PLATED  
WITH 6u" HARD GOLD IN  
SOLDER AREA.
- SHIELD-0.25mm THICK COPPER ALLOY,  
PLATED WITH NICKEL.

CAVITY CONFIRMS TO FCC RULES AND REGULATIONS  
PART 68,SUBPART F.



DO NOT SCALE DRAWING	TOLERANCES UNLESS OTHERWISE NOTED	INCH	MM	DR. <i>M.L.HUANG</i>	DATE SEP-02 '08	<h1>XMULTIPLE</h1>	
THIRD ANGLE PROJECTION	LINEAR	$00 \pm .01$ $000 \pm .005$ $0000 \pm .002$	$0.0 \pm 0.25$ $0.00 \pm 0.13$ $0.000 \pm 0.05$	CK'D <i>M.CHANG</i>	SEP-02 '08		TITLE SINGLE PORT, RJ45, SHIELDED, WITH LED WITH TRANSFORMER, SIDE ENTRY PCB JACK
MM INCH	ANGLE $\pm 0^{\circ} 30'$	RADII	$+ 0.40$ $- 0.15$	APP'D <i>W.J.YANG</i>	SEP-02 '08		SCALE SIZE DWG.NO. XMG-9805-81024-130D-L63T3-B-LFG-CS1

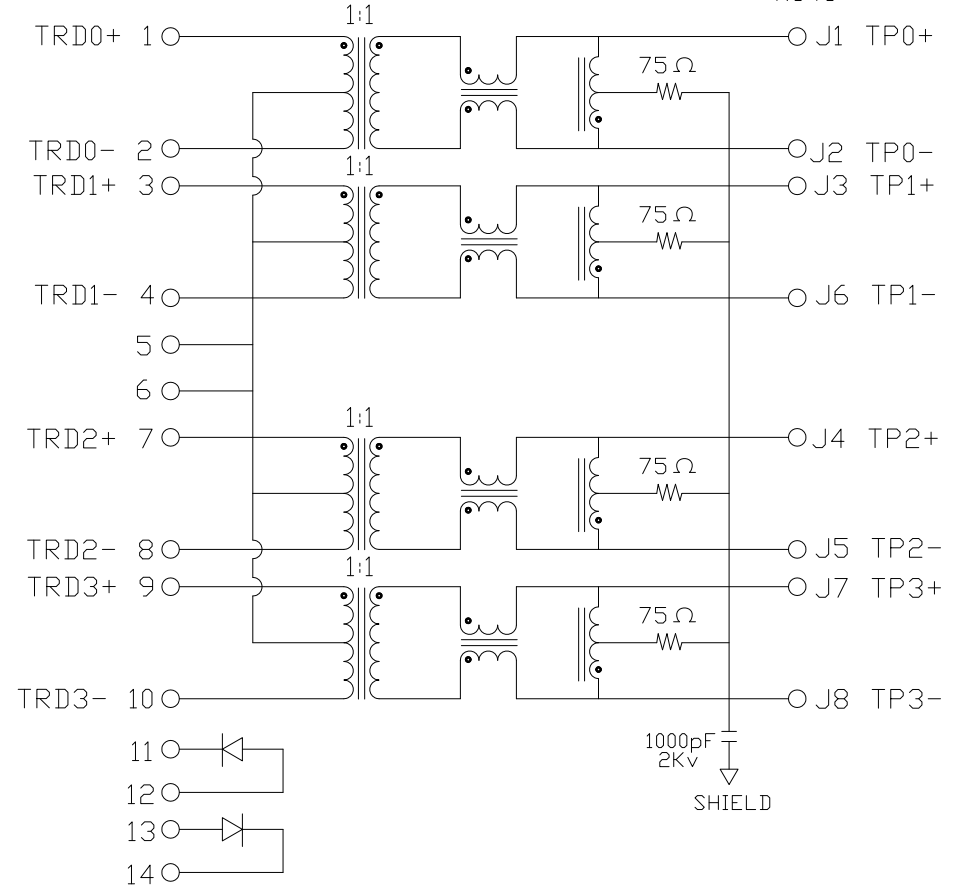
# 9805 TRANSFORMER TYPE 3

Specification :

Item	Parameter	Condition	Min.	Typ.	Max.	Unit	REMARK
1	Insertion loss	1-60MHz			-0.5	dB	
		60-100 MHz			-1.0	dB	
		100-125 MHz			-1.2	dB	
2	Return loss	1-30 MHz	-16			dB	
		30-40 MHz	-13.5			dB	
		40-50 MHz	-11.5			dB	
		60-100 MHz	-10			dB	
3	Primary Inductance 0.1Vrms, 8mA DC BIAS	100 KHz	350			$\mu$ H	
4	Crosstalk	1-30 MHz	-40			dB	
		30-60 MHz	-38			dB	
		60-100 MHz	-33			dB	
5	Hipot	Vrms	1.5			kV	
6	CMRR	1-100MHz	-30			dB	

CONNECTOR SOLDER SIDE

CONTACT SIDE  
RJ45



CONNECTOR SCHEMATIC

DO NOT SCALE DRAWING	TOLERANCES UNLESS OTHERWISE NOTED	INCH	MM	DR. <i>M.L.HUANG</i>	DATE JUN-17 '03	<i><b>XMULTIPLE</b></i>				
	LINEAR	$\frac{MM}{INCH}$	$00 \pm .01$ $000 \pm .005$ $0000 \pm .002$	CK'D <i>M.CHANG</i>	JUN-17 '03	TITLE TRANSFORMER TYPE 3 SPECIFICATION				
MM INCH	ANGLE $\pm 0^{\circ} 30'$	RADII	$\pm 0.40$ $- 0.15$	APP'D <i>W.J.YANG</i>	JUN-18 '03	SCALE	SIZE	DWG.NO. 9805 SERIES	REV. 1	SHEET 1