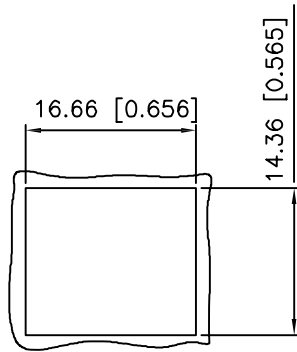
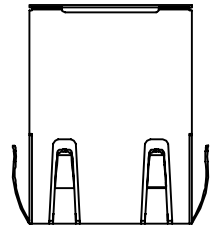
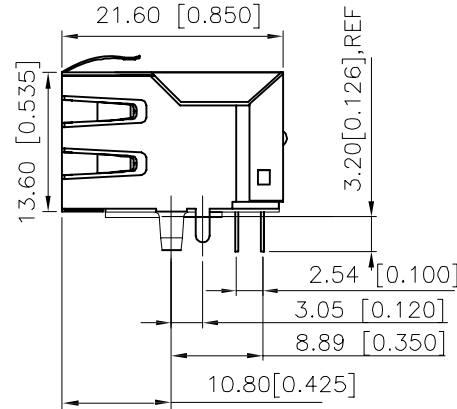
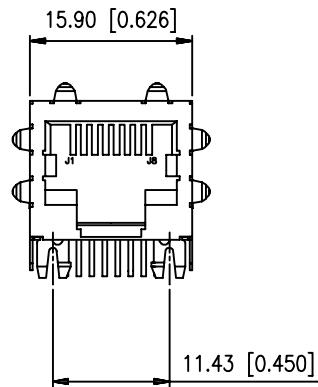


7	8		
REV.	ECN.NO.	NAME	DATE
A	NEW	BOB	2011/08/03

# 1. MECHANICAL DIMENSIONS :



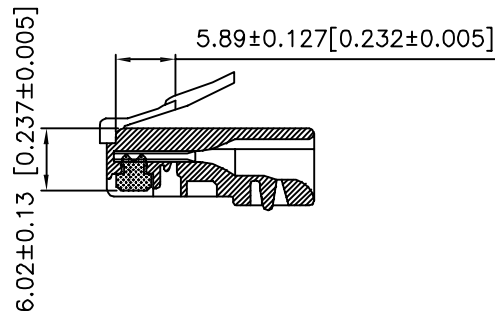
RECOMMENDED  
PANEL CUTOUT DIMENSION



## NOTES:

- MATERIALS:  
HOUSING—POLYESTER UL94V-0  
MIXED GLASS FIBER.  
STANDARD COLOR—BLACK.  
CONTACTS—0.35mm THICK PHOS—BRONZE PLATED  
WITH 15u" GOLD AND TIN  
IN SOLDER AREA.  
SHIELD—0.20mm THICK COPPER ALLOY,  
PLATED WITH NICKEL.
- CAVITY CONFIRMS TO FCC RULES AND REGULATIONS  
PART 68,SUBPART F.
- OPERATING TEMPERATURE: 0°C~70°C
- UNSPECIFIED TOLERANCE: .XX ±0.25[0.010]  
.X ±0.30[0.012]

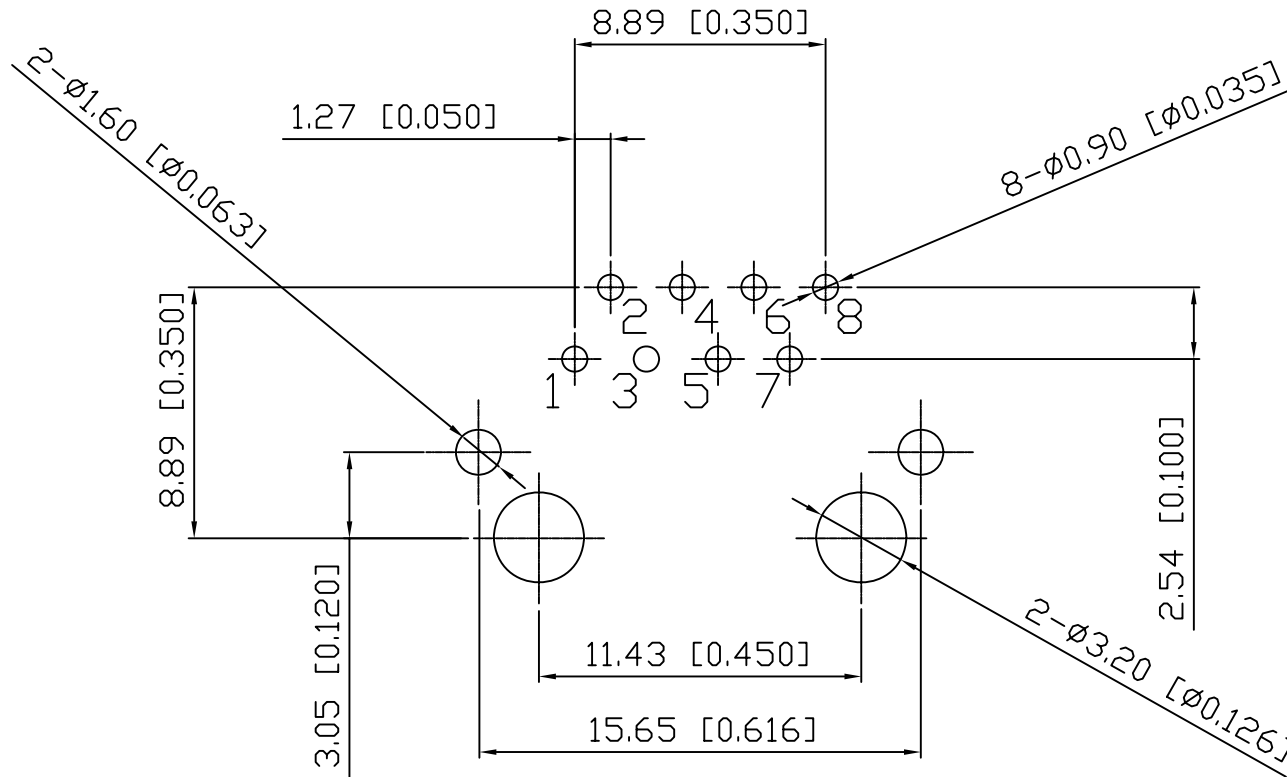
## RECOMMENED PLUG DIMENSION:



TOLERANCE UNSPECIFIED .0 ± 0.50 .00 ± 0.38 .00 ± 0.25 .000 ± 0.10 ANGLE ± 3° MANUFACTURING COPY				CONNECTING THE INFORMATION AGE	
TITLE: RJ45 Connectors, W/O LED, 8P, 8C, Shielded/Thru Hole/10/100 Mbps FILTER					
DRAWN BY:	BOB	SIZE: A4	UNIT: mm	PART NO: XMF-01A-0-D31-010-BRD	
CHECKED BY:	BOB	SCALE: 1:1		PROJECTION	REV: A
APPROVED BY:	IPIS	DWG . PATH	C/XMF-01A-0-D31-010-BRD		SHEET: 1 OF 3

7	8
REV.	ECN.NO.
A	NEW
NAME	DATE
BOB	2011/08/03

## 2. PCB LAYOUT :

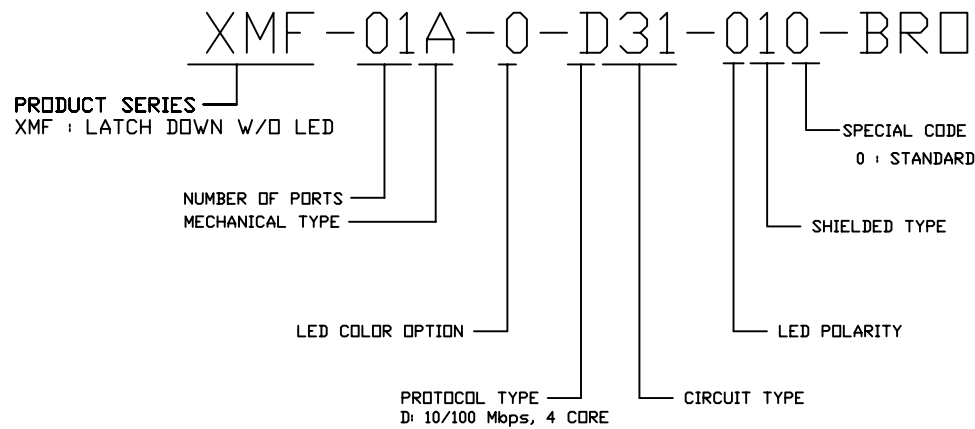
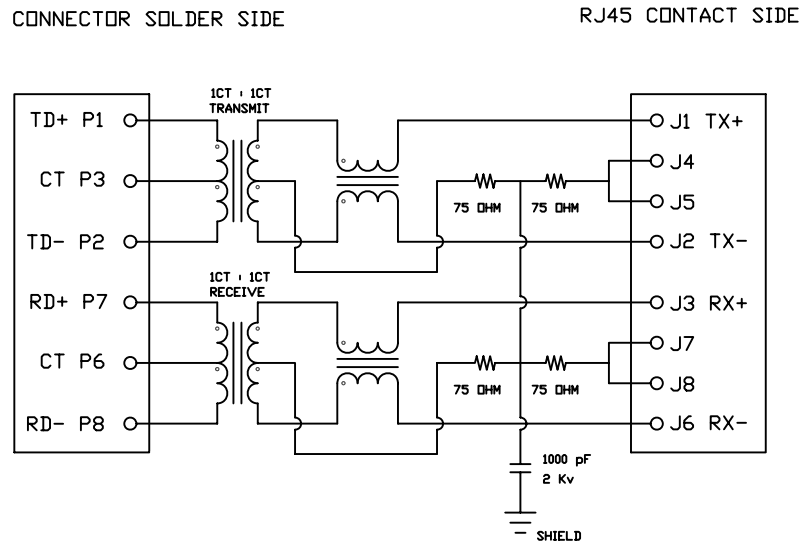


SUGGESTED PCB LAYOUT  
(TOP VIEW)  
DIMENSIONAL TOLERANCE: .XX ±0.08[0.003]

TOLERANCE UNSPECIFIED		X MULTIPLE		CONNECTING THE INFORMATION AGE	
.0	± 0.50				
.00	± 0.38	TITLE: RJ45 Connectors, W/O LED, 8P, 8C, Shielded/Thru Hole/10/100 Mbps FILTER			
.000	± 0.25	SIZE: A4	UNIT: mm	PART NO: XMF-01A-0-D31-010-BRD	
ANGLE	± 3°	SCALE: 1:1		PROJECTION	REV: A
MANUFACTURING COPY		DWG . PATH		C/XMF-01A-0-D31-010-BRD	SHEET: 20F3
DRAWN BY:	BOB				
CHECKED BY:	BOB				
APPROVED BY:	IPIS				

REV.	ECN.NO.	NAME	DATE
A	NEW	BOB	2011/08/03

#### 4. SCHEMATIC:



#### 5. ELECTRICAL CHARACTERISTICS :

TEST NOTES:(25±5°C)

- TR:(100KHz,0.1V);  
PINS:(P1-P2):(J1-J2)=1:1±3%  
PINS:(P7-P8):(J3-J6)=1:1±3%
- LX:(100KHz,100mV,8mA, DC Bias)  
PINS: (P1,P2),(P7,P8)=350uH MINIMUM
- DCR:  
PINS:(J1-J2),(J3-J6)= 1.2 OHMS MAXIMUM
- HIPOT:  
PINS(P1,P3,P2)TO(J1,J2)=1500VAC 60S OR 2250VDC 60S  
PINS(P7,P6,P8)TO(J3,J6)=1500VAC 60S OR 2250VDC 60S
- INSERTION LOSS:  
-1.0dB MAXIMUM AT 0.3MHz TO 100MHz;
- RETURN LOSS:  
-18dB MINIMUM AT 1MHz TO 30MHz;  
-15dB MINIMUM AT 30MHz TO 60MHz  
-10dB MINIMUM AT 60MHz TO 80MHz
- CROSS TALK:  
-38dB MINIMUM AT 1MHz TO 100MHz
- COMMON TO COMMON MODE REJECTION:  
-35dB MINIMUM AT 1MHz TO 100MHz

TOLERANCE UNSPECIFIED .0 ±0.50 .00 ±0.38 .00 ±0.25 .000 ±0.10 ANGLE ±3° MANUFACTURING COPY					
TITLE: RJ45 Connectors, W/O LED, 8P, 8C, Shielded/Thru Hole/10/100 Mbps FILTER					
DRAWN BY:	BOB	SIZE:	A4	UNIT:	mm
CHECKED BY:	BOB	SCALE:	1:1	PART NO:	XMF-01A-0-D31-010-BR0
APPROVED BY:	IPIS	DWG . PATH	C/XMF-01A-0-D31-010-BR0	PROJECTION	
				REV:	A
				SHEET:	30F3