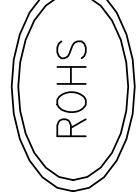
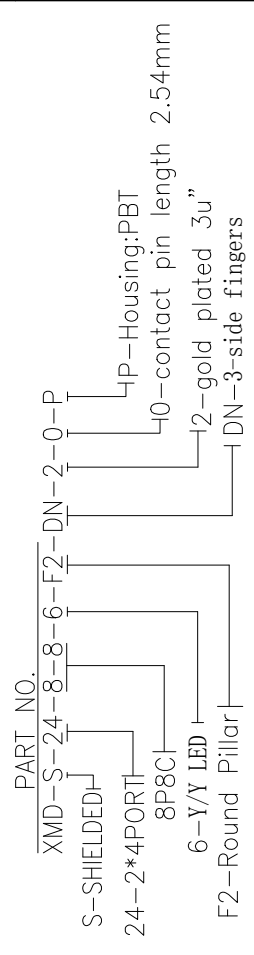
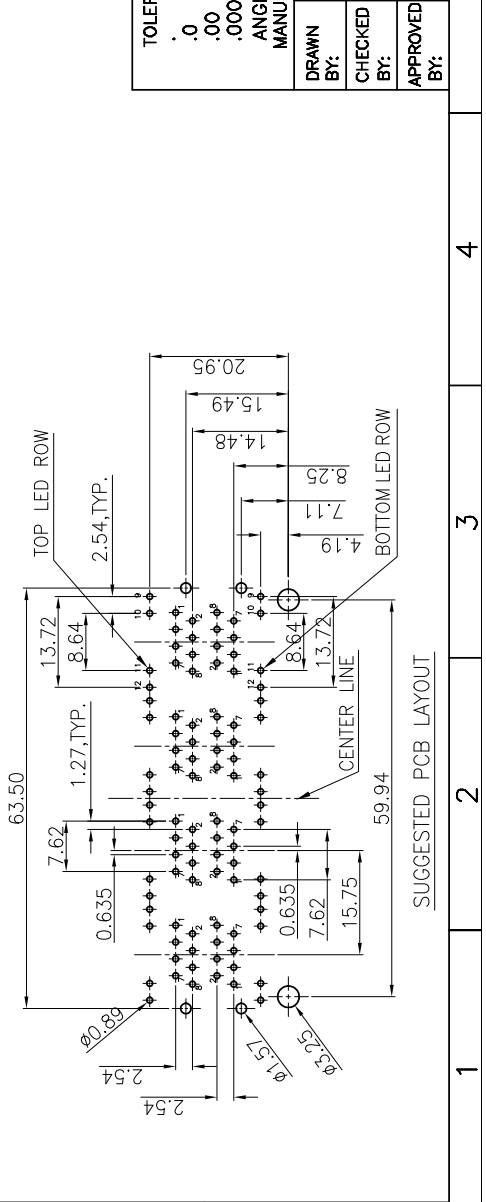
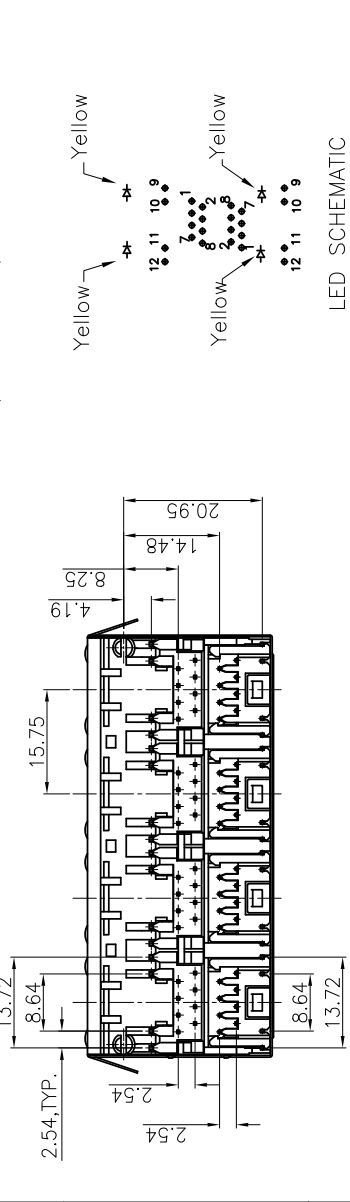
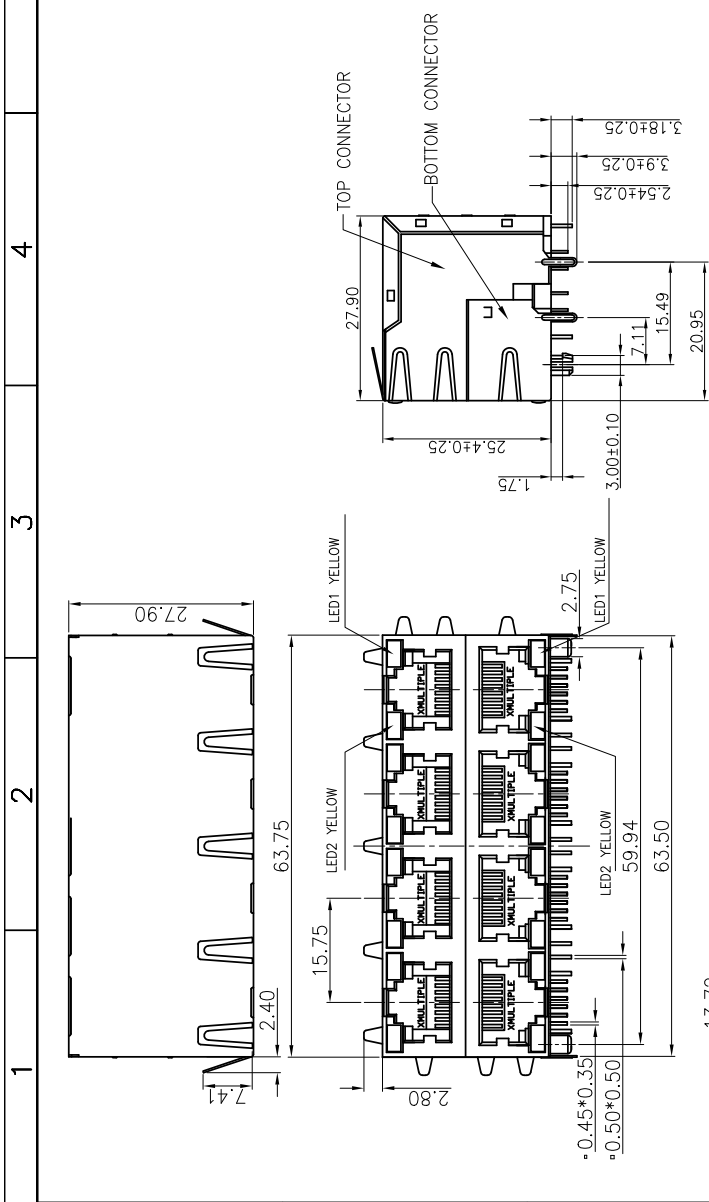


1	2	3	4	5	6	7	8
REV.	ECN.NO.	NAME	DATE				
A	NEW	KEN	2010/05/11				



NOTES:

1. MATERIAL:
HOUSING: HIGH TEMP. THERMOPLASTIC, BLACK, PBT UL 94V-0
CONTACT: PHOSPHOR BORNEZE, T=0.35MM.
SHELL: BRASS, T=0.25MM.
2. FINISH:
CONTACT: 50u" MIN. NICKEL UNDERPLATING ALL AREA,
100u" MIN. TIN ON SOLDER TAILS,
15u" MIN. GOLD PLATING ON CONTACT AREA.
SHELL: 30u" MIN. NICKEL UNDERPLATING ALL AREA
SHELL: T=0.25mm COPPER ZINC ALLOY PLATED WITH NICKEL
3. OPERATING TEMPERATURE: -40°C ~ +85°C.
4. JACK CAVITY CONFORMS TO FCC RULES AND REGULATIONS PART 68, SUBPART F



TOLERANCE UNSPECIFIED		MULTIPLE		CONNECTING THE INFORMATION AGE	
.0	±0.5				
.00	±0.38				
.000	±0.25				
ANGLE	±0.10				
MANUFACTURING COPY	±3°				
DRAWN BY:	STEVEN	SIZE:	A4	UNIT:	mm
CHECKED BY:		SCALE:	1:1	PROJECTION	
APPROVED BY:		DWG . PATH			
		TITLE: RJ45 Connectors, W/LED, 8P, 8C, Shielded/Thru Hole		PART NO: XMD-S-24-8-8-6-F2-DN-2-0-P	
				REVISION: A	
				SHEET: 1 OF 1	