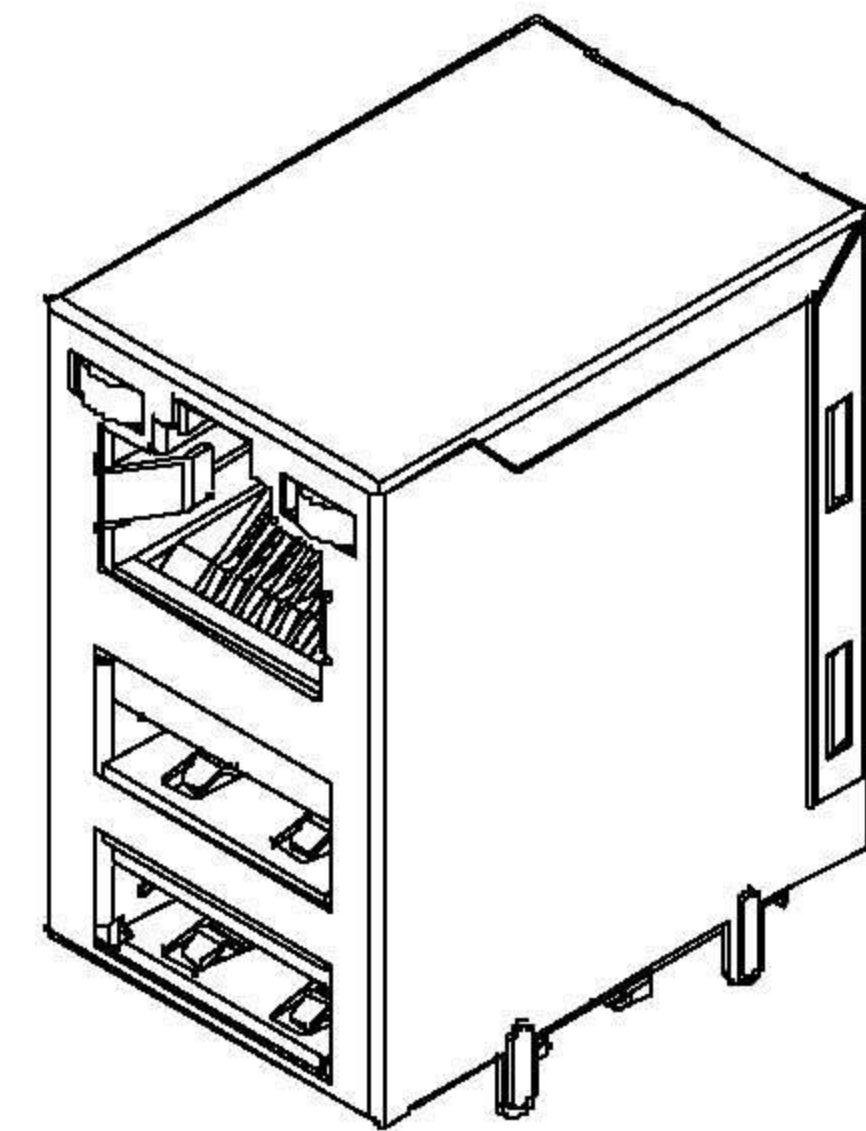
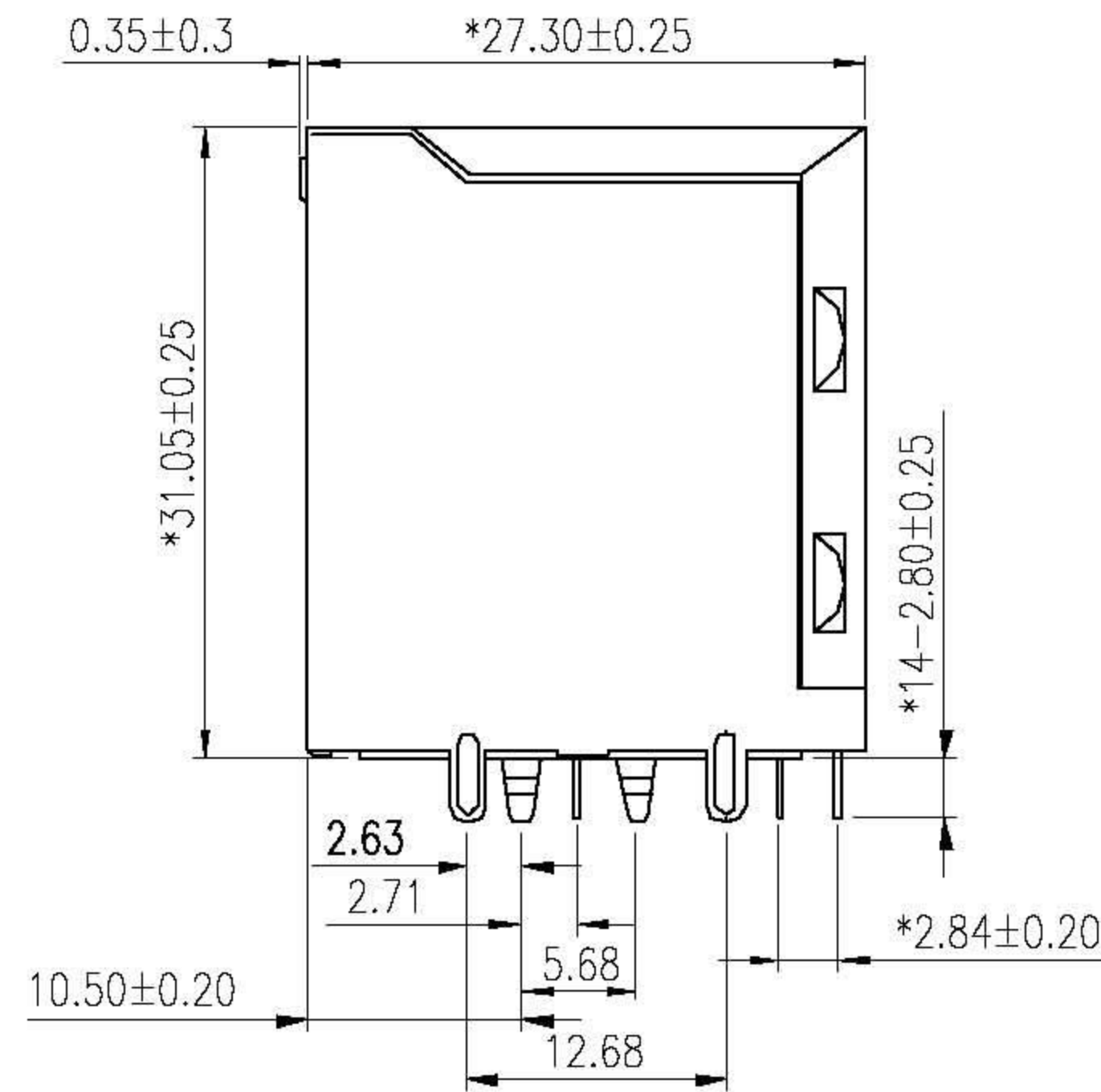
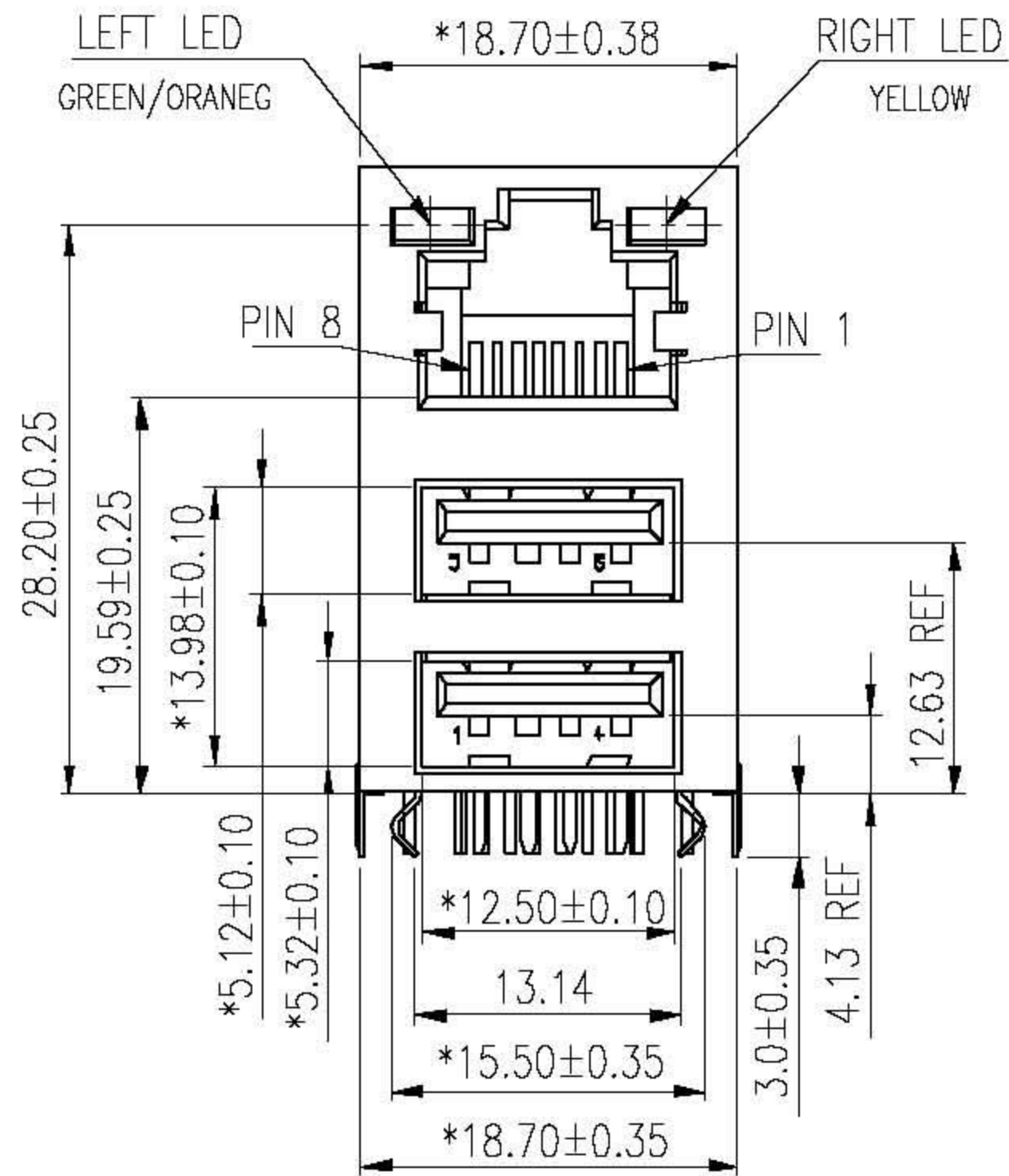


1. MECHANICAL DIMENSIONS :

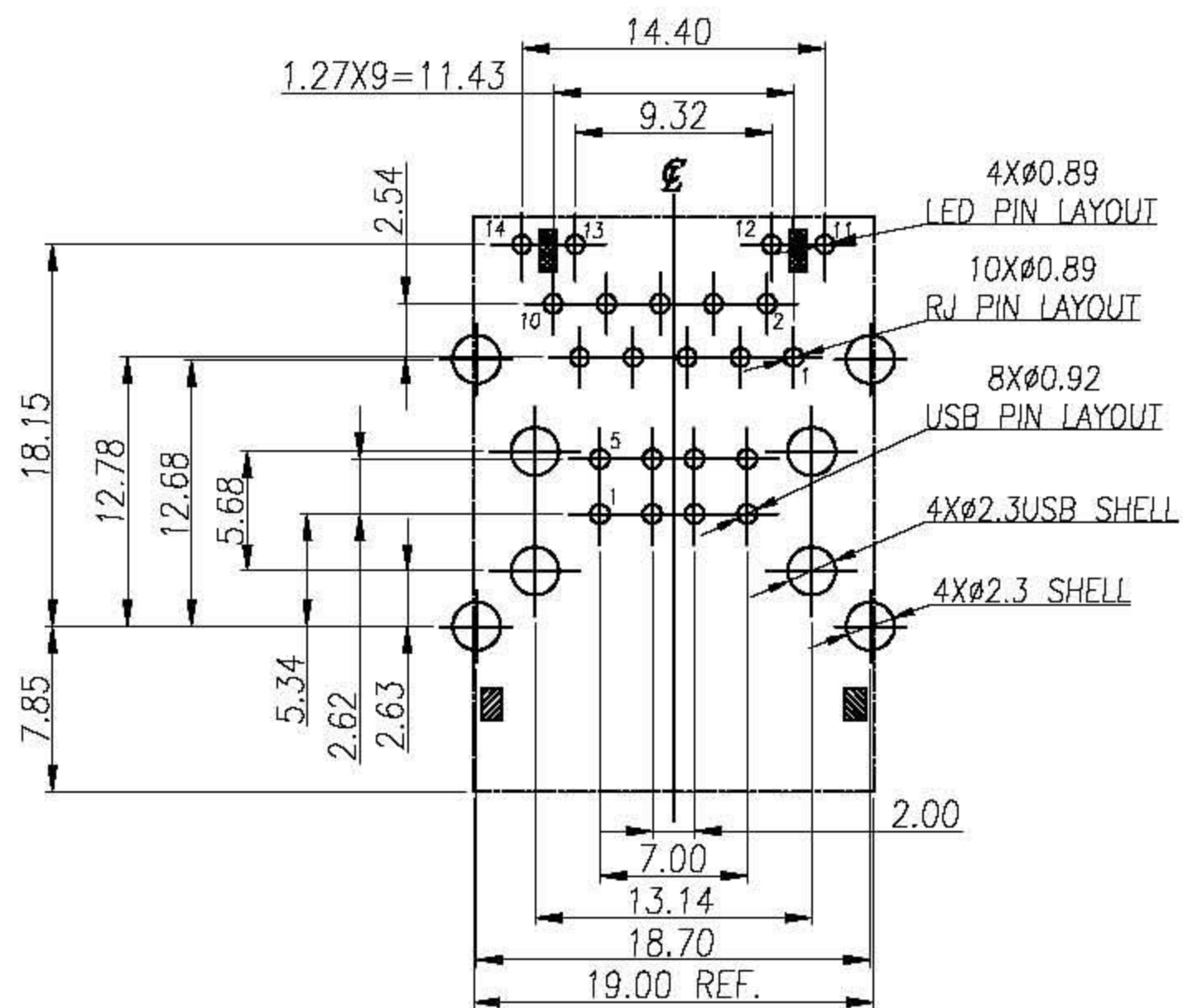


NOTES:

- 1.INSULATOR: PBT+30%GF, BLACK COLOR
- 2.CONTACT:PHOSPHOR BRONZE. 0.35mm THICK
SELECTIVE GOLD PLATED
- 3.SHIELD: SUS301 T=0.2mm±0.01

TOLERANCE UNSPECIFIED		<h1>Xmultiple</h1>					
.0	±0.25						
.00	±0.13	TITLE: RJ45 OVER USB CONNECTOR Shielded/Thru Hole/10/100Mbps FILTER					
.000	±0.10	DRAWN BY	Jim Wang	SIZE: A4	UNIT: mm	PART NO.	XMB-LK-G70-N-E71-1-580
ANGLE	±3.00°	CHECKED BY	Ann Yang	SCALE: 1:1	PROJECTION		REV.: A0
MANUFACTURING COPY		DATE	2010.12.23	DWG NO.	LK-RJ-WST-031	SHEET	1 OF 3

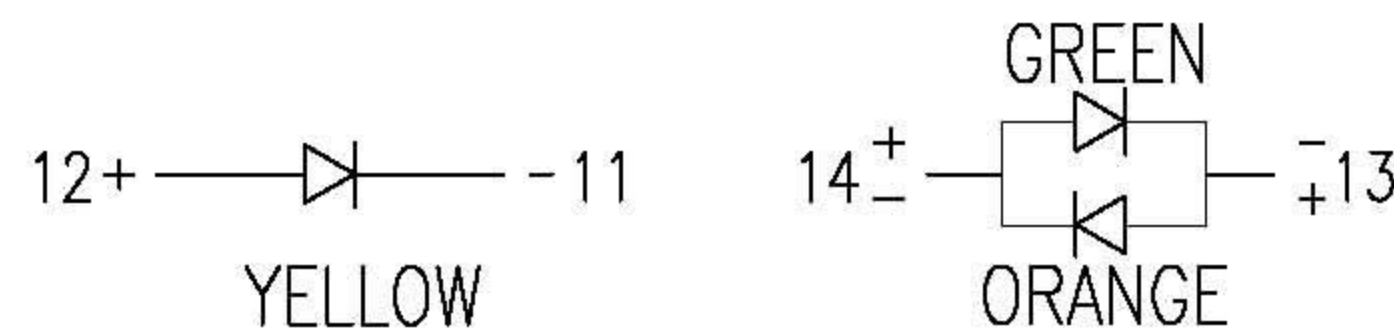
2. PCB LAYOUT :



RECOMMENDED PCB LAYOUT
COMPONENT SIDE

(ALL TOLERANCES ARE ± 0.05)

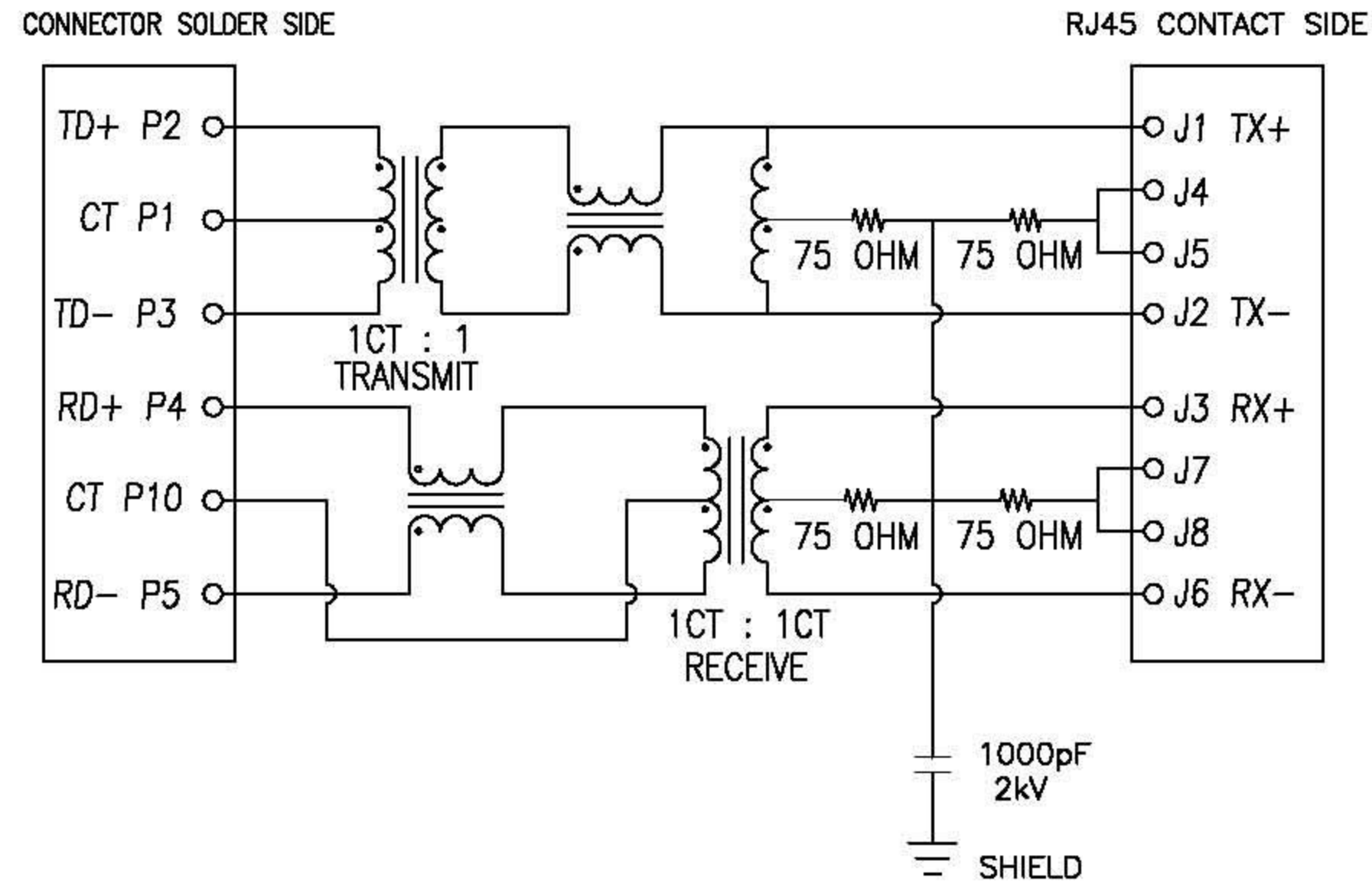
3. LED CONFIGURATION :



Color	Lens Color	Vf(v) @20mA		Iv(mcd) @10mA		Viewing angle
		Min	Max	Min	Typ	
Orange	White Diffused	1.7	2.6	1.8	4.0	2θ 1/2
Green		1.7	2.6	3.0	7.0	180
Yellow	Yellow Diffused	1.7	2.8	3.0	6.0	116

TOLERANCE UNSPECIFIED		<h1>Xmultiple</h1>					
.0	±0.25					TITLE: RJ45 OVER USB CONNECTOR Shielded/Thru Hole/10/100Mbps FILTER	
.00	±0.13	DRAWN BY	Jim Wang	SIZE: A4	UNIT: mm	PART NO.	XMB-LK-G70-N-E71-1-580
.000	±0.10	CHECKED BY	Ann Yang	SCALE: 1:1	PROJECTION		REV.: A0
ANGLE	±3.00°	DATE	2010.12.23	DWG NO.	LK-RJ-WST-031	SHEET	2 OF 3
MANUFACTURING COPY							

4. SCHMATIC :



LK-G70-N-E71-1-580

PRODUCT SERIES —
 LED COLOR OPTION —
 PROTOCOL TYPE — E:10/100 Mbps, 5CORE
 CIRCUIT TYPE —
 SPECIAL CODE — 0: Standard
 SHIELDED TYPE — 8:NON-EMI FINGER
 LED POLARITY — 5:Bi-color,+—
 CONTACT PLATING — 1:PLATED 3U"

5. ELECTRICAL CHARACTERISTICS :

TEST NOTES:(25±5°C)

- 1.TR:(100KHz,0.1V);
 PINS:(P2-P3):(J1-J2)=1:1±3%
 PINS:(P4-P5):(J3-J6)=1:1±3%
- 2.LX:(100KHz,100mV,8mA, DC Bias)
 PINS:(P2,P3),(P4,P5)=350uH MINIMUM
- 3.DCR:
 PINS:(J1-J2),(J3-J6)= 1.2 OHMS MAXIMUM
- 4.HIPOT:
 PINS(P2,P1,P3)TO(J1,J2)=1500VAC FOR 60 SECONDS
 PINS(P4,P10,P5)TO(J3,J6)=1500VAC FOR 60 SECONDS
- 5.INSERTION LOSS:
 -1.0dB MAXIMUM AT 0.3MHz TO 100MHz;
- 6.RETURN LOSS:
 -20dB MINIMUM AT 1MHz TO 30MHz;
 -15dB MINIMUM AT 30MHz TO 60MHz
 -10dB MINIMUM AT 60MHz TO 80MHz
- 7.CROSS TALK:
 -30dB MINIMUM AT 1MHz TO 100MHz
- 8.COMMON TO COMMON MODE REJECTION:
 -30dB MINIMUM AT 1MHz TO 100MHz

TOLERANCE UNSPECIFIED	
.0	±0.25
.00	±0.13
.000	±0.10
ANGLE	±3.00°
MANUFACTURING COPY	

Xmultiple

TITLE: RJ45 OVER USB CONNECTOR Shielded/Thru Hole/10/100Mbps FILTER

DRAWN BY	Jim Wang	SIZE: A4	UNIT: mm	PART NO.	XMB-LK-G70-N-E71-1-580
CHECKED BY	Ann Yang	SCALE: 1:1	PROJECTION		REV.: A0
DATE	2010.12.23	DWG NO.	LK-RJ-WST-031	SHEET	3 OF 3