

A

B

C

D

E

1

2

3

4

5

## 1. MATERIAL:

## RJ45:

1.1 INSULATOR: PBT, UL94V-0; COLOR: BLACK.

1.2 RJ MATING TERMINAL: PHOSPHOR-BRONZE, SELECTIVE GOLD 30u" PLATED IN CONTACT AREA, 30u" MIN. NICKEL UNDERPLATED OVERALL.

1.3 RJ SOLDER TAIL: BRASS, 80u" MIN. TIN PLATED OVER 30u" MIN. NICKEL UNDERPLATED OVERALL.

1.4 FRONT AND BACK SHELL: BRASS, 80u" MIN. NICKEL PLATED OVER 150u" MIN. COPPER UNDERPLATED OVERALL. OR STAINLESS STEEL, GROUNDING LEG: PRE-SOLDERING

## USB:

1.5 INSULATOR: PBT, UL94V-0; COLOR: BLACK.

1.6 CONTACT: BRASS.

1.7 CONTACT FINISH: GOLD ON MATING END, TIN ON TERMINATION END, WITH ENTIRE CONTACT NICKEL UNDERPLATED.

1.8 FRONT SHELL: BRASS.

1.9 BACK SHELL: STEEL.

## 2. SPECIFICATIONS:

## RJ45:

2.1 CURRENT RATING: 1.5 AMP.

2.2 INSULATION RESISTANCE: 500MΩ MIN.

## USB:

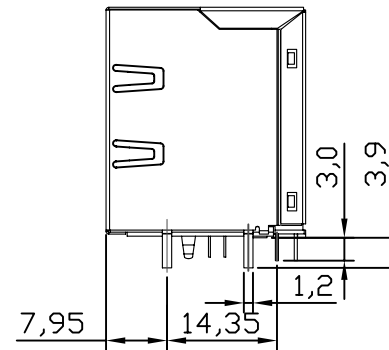
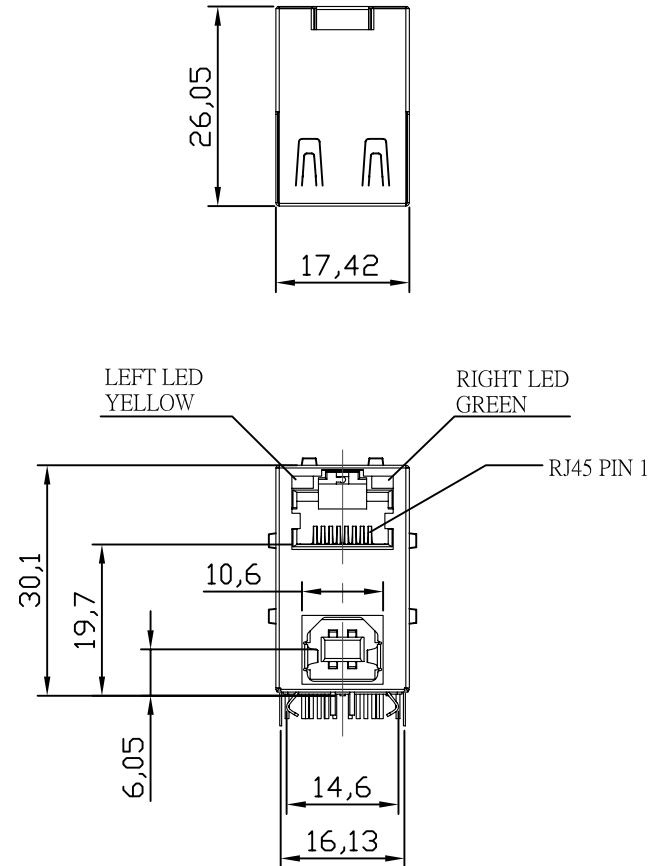
2.1 CURRENT RATING: 1.5 AMP.

2.2 CONTACT RESISTANCE: 30mΩ MAX.

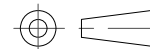
2.3 INSULATION RESISTANCE: 1000MΩ MIN.

2.4 DIELECTRIC WITHSTANDING VOLTAGE: 500V AC FOR 1 MINUTE.

## 3. TEMPERATURE RATING: -40°C ~ +70°C.



TOLERANCES:  
 DIM. XX ±0.3  
 X.XX ±0.25  
 UNIT: mm  
 GENERAL ANGLE:  
 ±3°



## TITLE:

RJ+USB B TYPE

DRAWN: Wayne

CHECKED: Arnold

APPROVAL: Frank

DWG. NO.: XMB-CB3FOABAB1S6-A21

PART NO.: XMB-CB3FOABAB1S6-A21

SCALE: 1:1

SHEET: 1 OF 3

LAYER: NONE

DWG. SIZE: A4

RFQ NO.: Q1012050

X MULTIPLE

REVISIONS

A

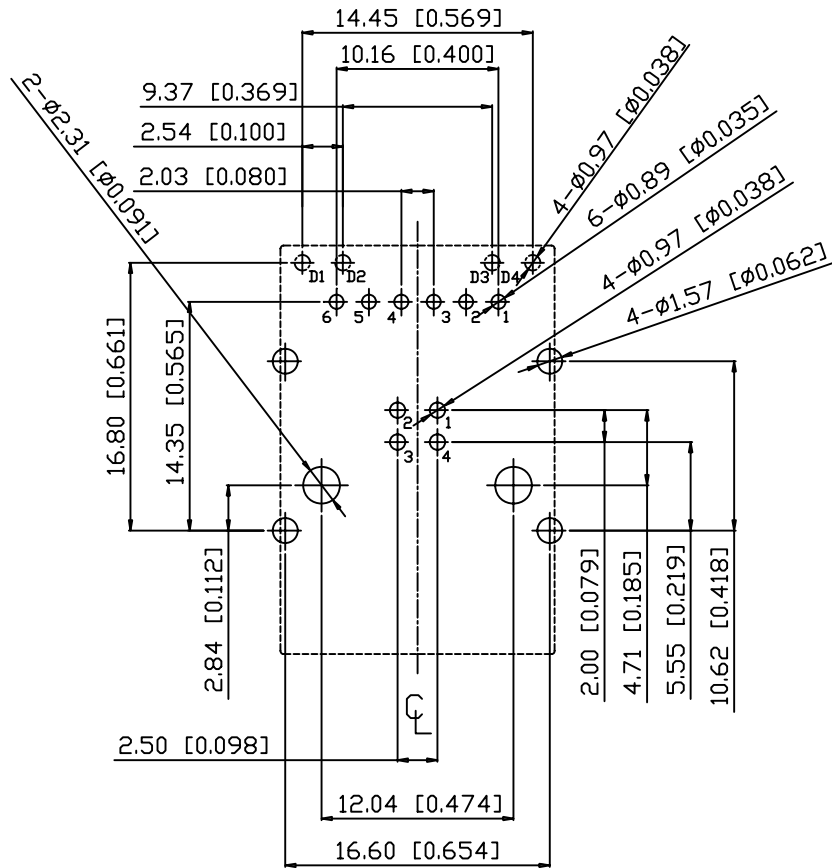
B

C

D

E

## PCB LAYOUT



SUGGESTED PCB LAY UT

(T P VIEW)

DIMENSIONAL TOLERANCE: .XX ±0.08[0.003]

XMB-CB3FOABAB1S6-A21		
	LEFT LED	RIGHT LED

5

TOLERANCES:  
 DIM. XX ±0.3  
 X.XX ±0.25  
 UNIT: mm  
 GENERAL ANGLE:  
 ±3°

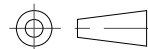
TITLE:  
 RJ+USB B TYPE

A	NEW RELEASE	Wayne	JAN.06.2011
REV.	DESCRIPTION	ECN	DRAWN DATE

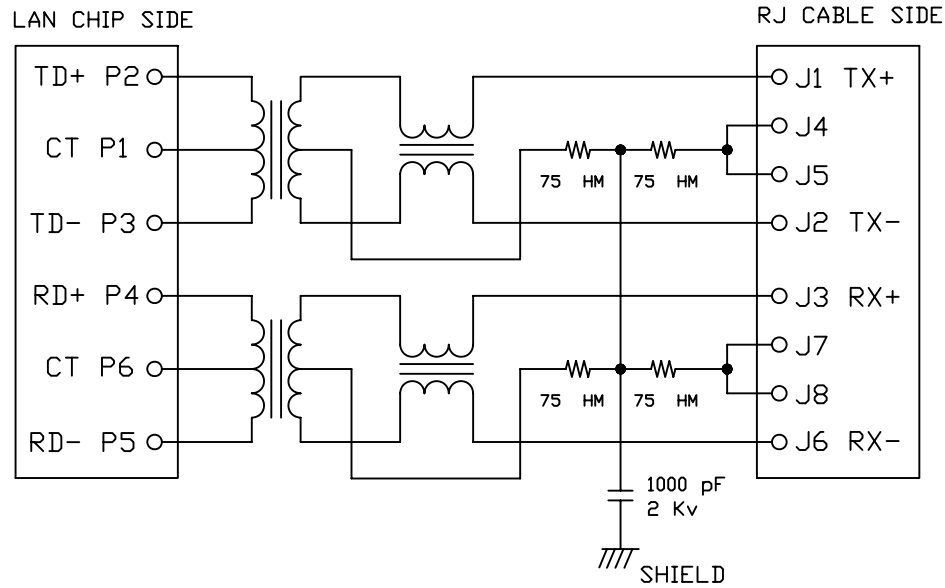
DRAWN: Wayne DWG. NO.: XMB-CB3FOABAB1S6-A21  
 CHECKED: Arnold PART NO.: XMB-CB3FOABAB1S6-A21

APPROVAL: Frank SCALE: 1:1 SHEET: 2 OF 3 LAYER: NONE DWG. SIZE: A4 RFQ NO.: Q1012050

REVISIONS



X MULTIPLE



- TEST NOTES:(25±5°C)
- 1.TR:(100KHz,0.1V);  
PINS:(P2-P3):(J1-J2)=1:1±3%  
PINS:(P4-P5):(J3-J6)=1:1±3%
  - 2.LX:(100KHz,100mV,8mA, DC Bias)  
PINS: (P2,P3),(P4,P5)=350uH MINIMUM
  - 3.DCR:  
PINS:(J1-J2),(J3-J6)= 1.2 OHMS MAXIMUM
  - 4.HIPOT:  
PINS(P2,P1,P3)TO(J1,J2)=1500VAC FOR 60 SECONDS  
PINS(P4,P6,P5)TO(J3,J6)=1500VAC FOR 60 SECONDS
  - 5.INSERTION LOSS:  
-1.0dB MAXIMUM AT 0.3MHz TO 100MHz;
  - 6.RETURN LOSS:  
-20dB MINIMUM AT 1MHz TO 30MHz;  
-15dB MINIMUM AT 30MHz TO 60MHz  
-10dB MINIMUM AT 60MHz TO 80MHz
  - 7.CROSS TALK:  
-30dB MINIMUM AT 1MHz TO 100MHz
  - 8.COMMON TO COMMON MODE REJECTION:  
-30dB MINIMUM AT 1MHz TO 100MHz

TOLERANCES:  
0.3  
0.25  
UNIT: mm  
GENERAL ANGLE:  
3°

TITLE:  
RJ+USB B TYPE

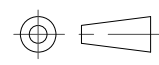
DRAWN: Wayne DWG. NO.: XMB-CB3FOABAB1S6-A21  
CHECKED: Arnold PART NO.: XMB-CB3FOABAB1S6-A21

APPROVAL: Frank SCALE: 1:1 SHEET: 3 OF 3 LAYER: NONE DV A4

RFQ NO.: Q1012050

REV.	DESCRIPTION	ECN	DRAWN	DATE
A	NEW RELEASE		Wayne	JAN.06.2011

REVISIONS



X MULTIPLE