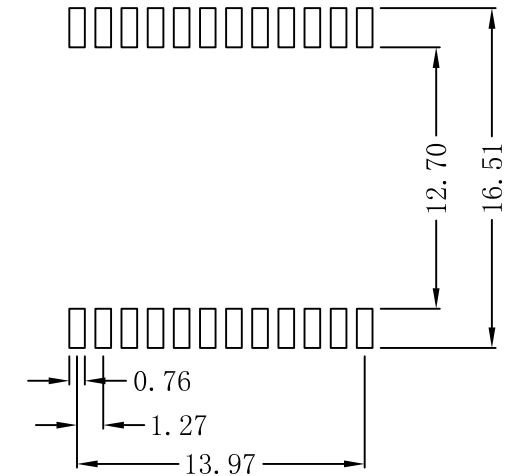
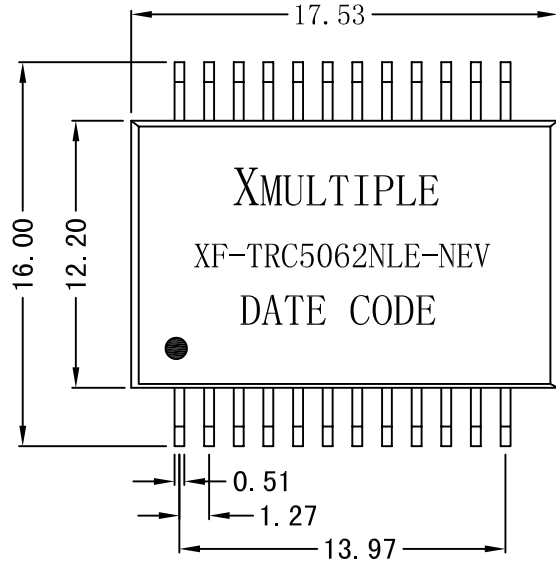
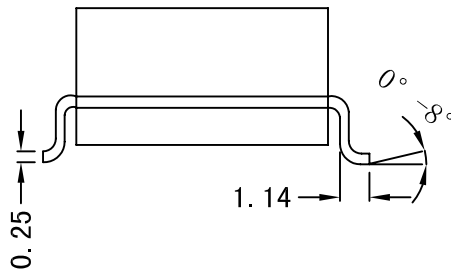
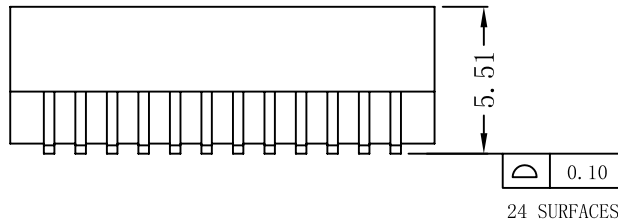


Mechanical:

REV.	ECN NO.	DESCRIPTION	DATE	APPD
A	REL		24/09/2009	



SUGGESTED PAD LAYOUT



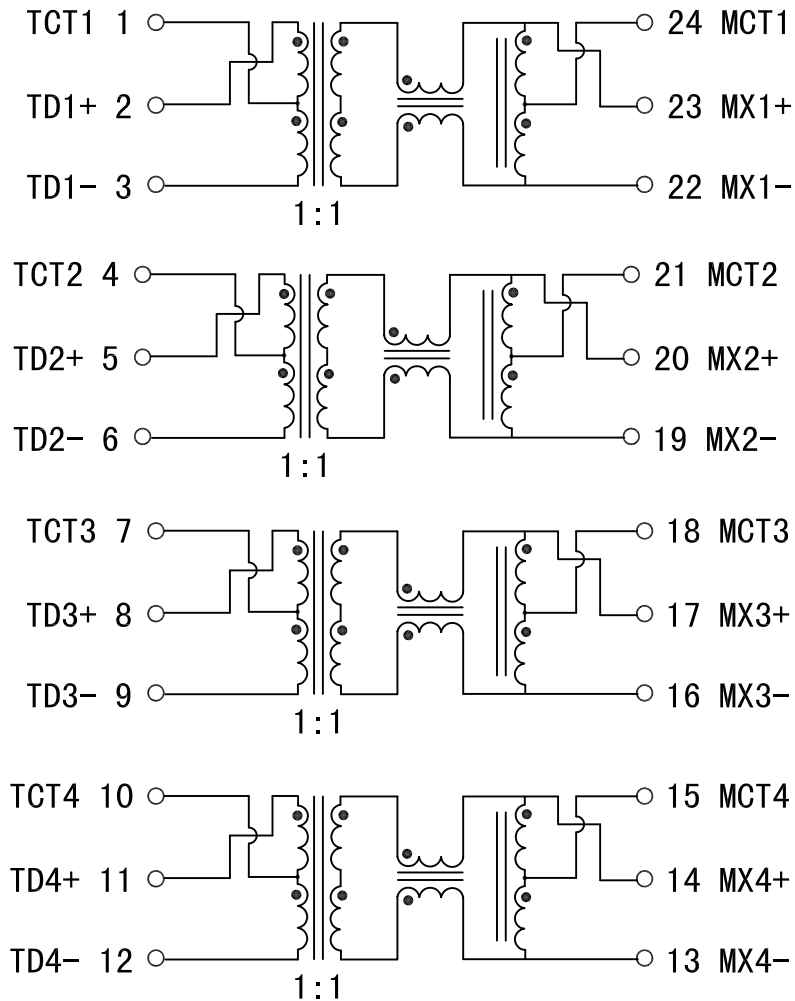
NOTES:

1. Designed to support application, such as SOHO (ADSL modems), LAN-on-Motherboard (LOM), hub and Switches.
2. With various Turns Ratios.
3. 350uH min OCL with 8mA bias current.
4. RoHS "NL" peak solder rating 235°C.
5. UL Certification: File Number E321120

X:X	±0.20	APPD:	XMULTIPLE
X:XX	±0.10	CHKD:	
X:XXX	±0.05	DR: C. H. Y	<i>Title:</i> 1000Base-T Magnetic Modules
ANGLES	±1°	UNIT: mm	PART NO.: XF-TRC5062NLE-NEV
	SCALE: 2/1	SHEET: 1/2	REV: A
		DWG NO.: TRC09092401	

Schematic:

REV.	ECN NO.	DESCRIPTION	DATE	APPD
A	REL		24/09/2009	



Electrical Specification @25°C

- Turns Ratio:
TX=1:1 RX=1:1
- Insertion Loss (dB MAX):
0.1MHz:-1.1 100MHz:-1.0
125MHz:-2.0
- Return Loss (dB MIN @100Ω ±15%):
30MHz:-18 60MHz:-12
80MHz:-12 100MHz:-10
- Crosstalk (dB MIN):
30MHz:-43 60MHz:-37
100MHz:-33
- Isolation Voltage:1500Vrms MIN
- Operating Temperature:0~70°C



X:X	±0.20	APPD:	XMULTIPLE	
X:XX	±0.10	CHKD:		
X:XXX	±0.05	DR: C.H.Y	Title: 1000Base-T Magnetic Modules	
ANGLES	±1°	UNIT: mm	PART NO.: XF-TRC5062NLE-NEV	
	SCALE: 2/1	SHEET: 2/2	REV: A	DWG NO.: TRC09092401