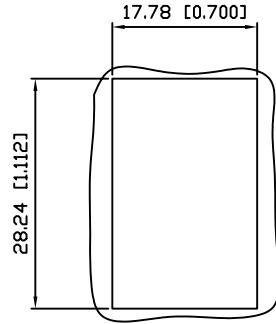
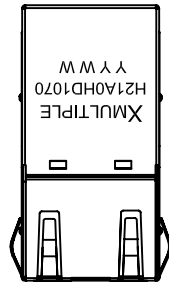


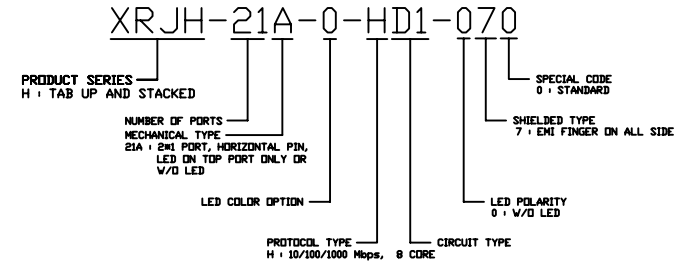
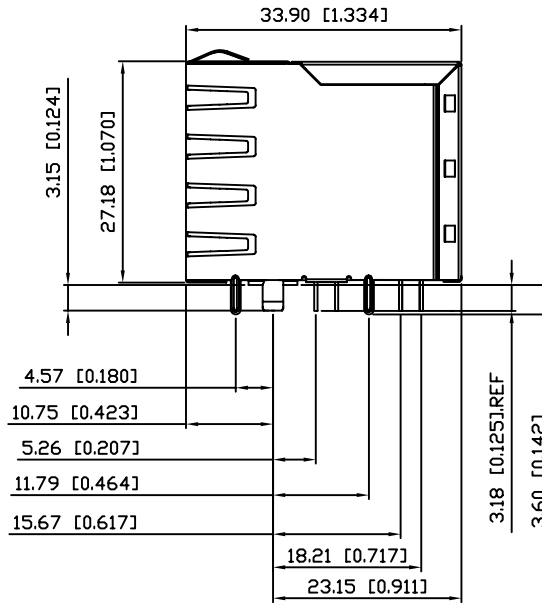
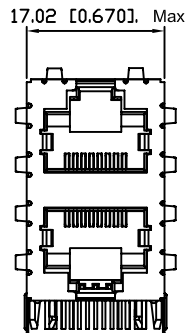
1. MECHANICAL DIMENSIONS :



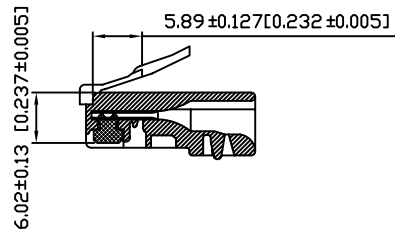
RECOMMENDED  
PANEL CUTOUT DIMENSION

NOTES:

- MATERIAL:  
HOUSING-PBT POLYESTER UL-94V-0  
MIXED GLASS FIBER.  
STANDARD COLOR-BLACK  
CONTACTS-0.35mm THICK PHOS-BRONZE PLATED  
WITH 30u" HARD GOLD AND TIN IN  
SOLDER AREA, AND 50u" NICKEL  
PLATING IN ALL AREA.  
SHIELD- SUS301 T=0.20 mm WITH NICKEL ON  
TERMINATION END.
- CAVITY CONFIRMS TO FCC RULES AND REGULATIONS  
PART 68,SUBPART F.
- UNSPECIFIED TOLERANCE: .XX ±0.25[0.010]  
.X ±0.30[0.012]



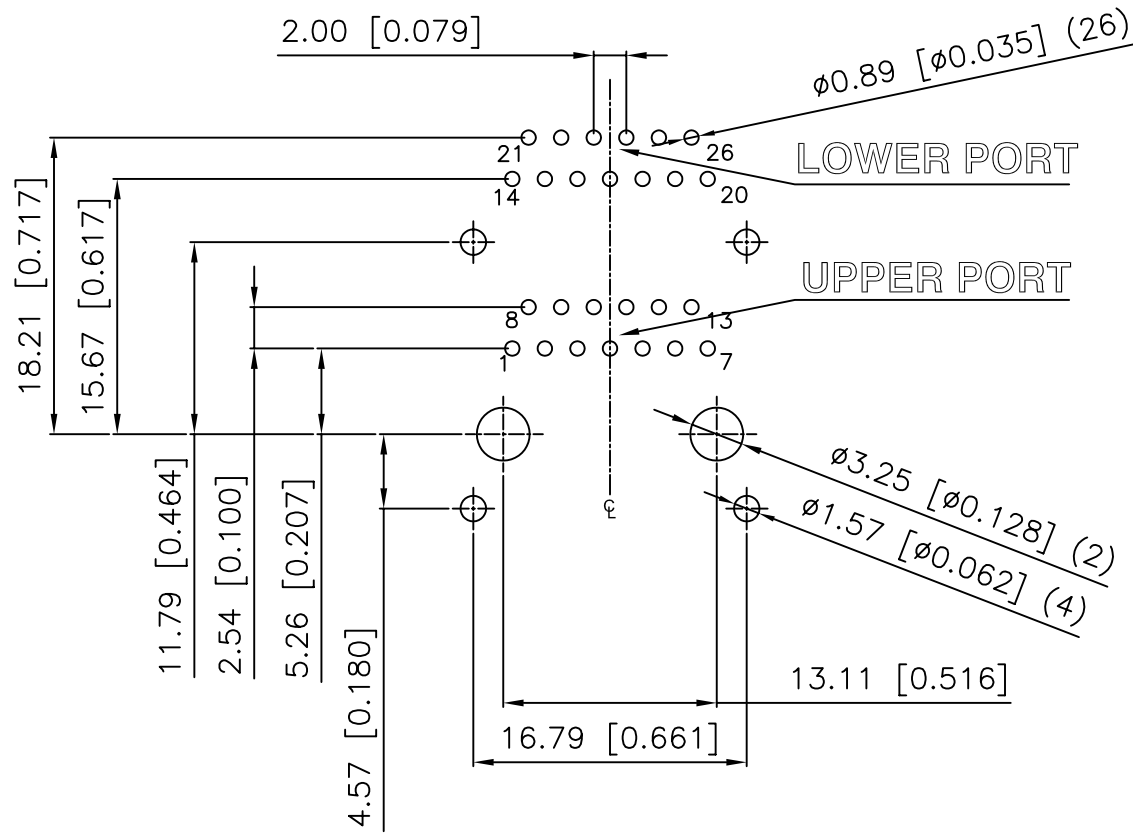
RECOMMENED PLUG DIMENSION:



RoHS Compliant

<h1>X MULTIPLE</h1>		CONNECTING THE INFORMATION AGE	
X MULTIPLE ASIA 4F, No. 347, Yang Guang St., Neihu Chu, Taipei, Taiwan 11475		X MULTIPLE USA 1420 Los Angeles Ave., Suite G, Simi Valley, CA 93065	
THIS DRAWING IS A CONTROLLED DOCUMENT.		G/NO:	
TITLE: Stacked RJ45, w/ LED, with 10/100/1000 Mbps LAN Magnetics 8P,13C, Shielded, Thru Hole.		DWG NO: XRJH-21A-0-HD1-070	
PART NO: XRJH-21A-0-HD1-070		DRAWN: RUNES	
		CHKD: JEFF	
		UNIT mm[inch]	SHEET 1 of 4
		REV 01	DATE May.23.06

2. PCB LAYOUT :



SUGGESTED PCB LAYOUT  
TOP VIEW

RoHS Compliant

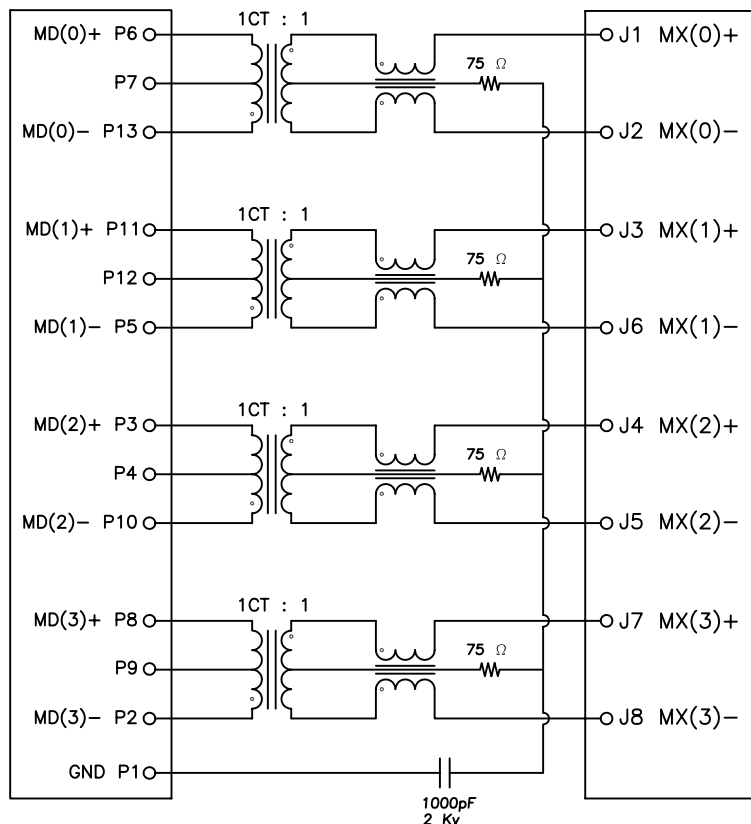
		CONNECTING THE INFORMATION AGE	
XMULTIPLE ASIA 4F, No. 347, Yang Guang St., Neihu Chiu, Taipei, Taiwan 11475		XMULTIPLE USA 1420 Los Angeles Ave., Suite G, Simi Valley, CA 93065	
THIS DRAWING IS A CONTROLLED DOCUMENT.		G/NO:	
TITLE: Stacked RJ45, W/ LED, with 10/100/1000 Mbps LAN Magnetics 8P,13C, Shielded, Thru Hole.		DWG NO: XRJH-21A-0-HD1-070	
PART NO: XRJH-21A-0-HD1-070		DRAWN: RUNES	
		CHKD: JEFF	
UNIT mm[inch]		SHEET 2 of 4	
DATE: May.23.06		REV 01	

### 3. UPPER PORT:

#### 3-1. SCHEMATIC:

CONNECTOR SOLDER SIDE

RJ45 CONTACT SIDE



#### 3-2. ELECTRICAL CHARACTERISTICS :

TEST NOTES:(25±5°C)

- TR:(100KHz,0.1V); 100%  
PINS:(P6,P13):(J1,J2)=1:1±3%;(P11,P5):(J3,J6)=1:1±3%  
PINS:(P3,P10):(J4,J5)=1:1±3%;(P8,P2):(J7,J8)=1:1±3%
- LX:(100KHz,100mV,8mA, DC Bias) 100%  
PINS:(P6,P13),(P11,P5),(P3,P10),(P8,P2)=350uH MINIMUM
- DCR: 100%  
PINS:(P6,P13),(P11,P5),(P3,P10),(P8,P2)=1.0 MAXIMUM  
PINS:(J1,J2),(J3,J6),(J4,J5),(J7,J8)=1.0 MAXIMUM
- HIPOT: 100%  
PINS(P6,P13)TO(J1,J2),(P11,P5)TO(J3,J6)=1650VAC FOR 2 SECONDS  
PINS(P3,P10)TO(J4,J5),(P8,P2)TO(J7,J8)=1650VAC FOR 2 SECONDS
- INSERTION LOSS:  
-0.8dB MAXIMUM AT 0.3MHz TO 100MHz;  
-1.2dB MAXIMUM AT 100MHz TO 120MHz
- RETURN LOSS:  
-18dB MINIMUM AT 0.5MHz TO 40MHz;  
-12+20Log(f/80MHz)dB MINIMUM AT 40MHz TO 100MHz
- CROSS TALK:  
-33+20Log(f/100MHz)dB MINIMUM AT 0.1MHz TO 100MHz
- COMMON TO DIFFERENTIAL MODE REJECTION:  
-35dB MINIMUM AT 300KHz TO 100MHz
- COMMON TO COMMON MODE REJECTION:  
-30dB MINIMUM AT 300KHz TO 100MHz

# RoHS Compliant

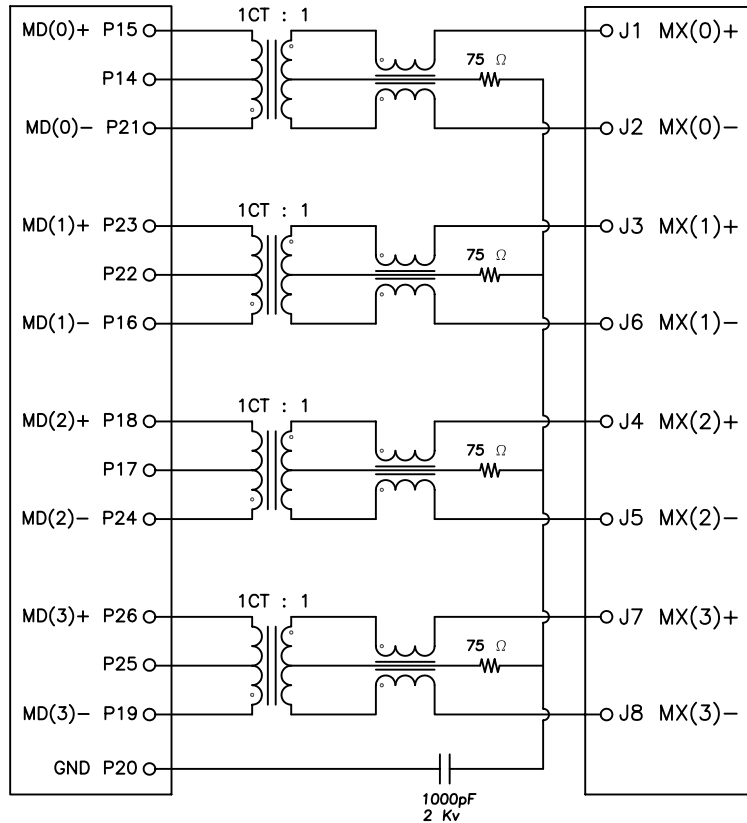
		CONNECTING THE INFORMATION AGE	
XMULTIPLE ASIA 4F, No. 347, Yang Guang St., Neihu Chiu, Taipei, Taiwan 11475		XMULTIPLE USA 1420 Los Angeles Ave., Suite G, Simi Valley, CA 93065	
THIS DRAWING IS A CONTROLLED DOCUMENT.		G/NO:	
TITLE: Stacked RJ45, W/ LED, with 10/100/1000 Mbps LAN Magnetics 8P,13C, Shielded, Thru Hole.		DWG NO: XRJH-21A-0-HD1-070	
PART NO: XRJH-21A-0-HD1-070		DRAWN: RUNES	
		CHKD: JEFF	
UNIT: mm[inch]		SHEET: 3 of 4	
DATE: May.23.06		REV: 01	

#### 4. LOWER PORT:

##### 4-1. SCHEMATIC:

CONNECTOR SOLDER SIDE

RJ45 CONTACT SIDE



##### 4-2. ELECTRICAL CHARACTERISTICS :

TEST NOTES:(25±5°C)

- TR:(100KHz,0.1V); 100%  
PINS:(P15,P21):(J1,J2)=1:1±3%;(P23,P16):(J3,J6)=1:1±3%  
PINS:(P18,P24):(J4,J5)=1:1±3%;(P26,P19):(J7,J8)=1:1±3%
- LX:(100KHz,100mV,8mA, DC Bias) 100%  
PINS:(P15,P21),(P23,P16),(P18,P24),(P26,P19)=350uH MINIMUM
- DCR: 100%  
PINS:(P15,P21),(P23,P16),(P18,P24),(P26,P19)=1.0 MAXIMUM  
PINS:(J1,J2),(J3,J6),(J4,J5),(J7,J8)=1.0 MAXIMUM
- HIPOT: 100%  
PINS(P15,P21)TO(J1,J2),(P23,P16)TO(J3,J6)=1650VAC FOR 2 SECONDS  
PINS(P18,P24)TO(J4,J5),(P26,P19)TO(J7,J8)=1650VAC FOR 2 SECONDS
- INSERTION LOSS:  
-0.8dB MAXIMUM AT 0.3MHz TO 100MHz;  
-1.2dB MAXIMUM AT 100MHz TO 120MHz
- RETURN LOSS:  
-18dB MINIMUM AT 0.5MHz TO 40MHz;  
-12+20Log(f/80MHz)dB MINIMUM AT 40MHz TO 100MHz
- CROSS TALK:  
-33+20Log(f/100MHz)dB MINIMUM AT 0.1MHz TO 100MHz
- COMMON TO DIFFERENTIAL MODE REJECTION:  
-35dB MINIMUM AT 300KHz TO 100MHz
- COMMON TO COMMON MODE REJECTION:  
-30dB MINIMUM AT 300KHz TO 100MHz

# RoHS Compliant

<b>XMULTIPLE</b>		CONNECTING THE INFORMATION AGE	
XMULTIPLE ASIA 4F, No. 347, Yang Guang St., Neihu Chiu, Taipei, Taiwan 11475		XMULTIPLE USA 1420 Los Angeles Ave., Suite G, Simi Valley, CA 93065	
THIS DRAWING IS A CONTROLLED DOCUMENT.		G/NO:	
TITLE: Stacked RJ45, W/ LED, with 10/100/1000 Mbps LAN Magnetics 8P,13C, Shielded, Thru Hole.		DWG NO: XRJH-21A-0-HD1-070	
PART NO: XRJH-21A-0-HD1-070		DRAWN: RUNES	
		CHKD: JEFF	
		DATE: May.23.06	
UNIT mm[inch]		SHEET 4 of 4	REV 01