

1 2 3 4 5 6 7 8

A

A

B

B

C

C

D

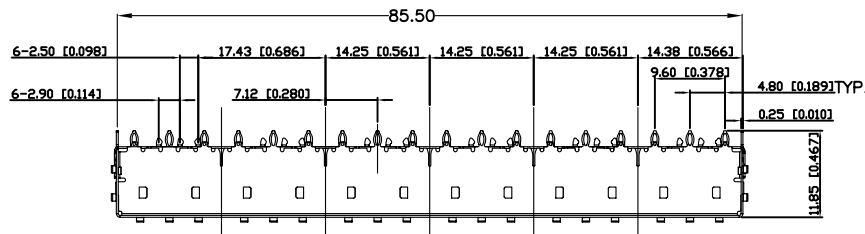
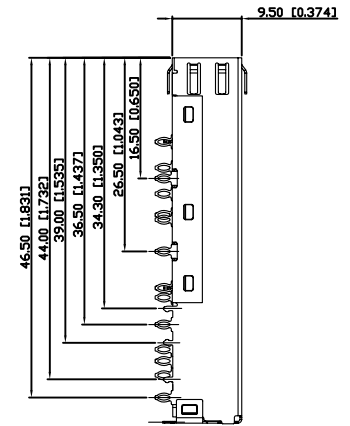
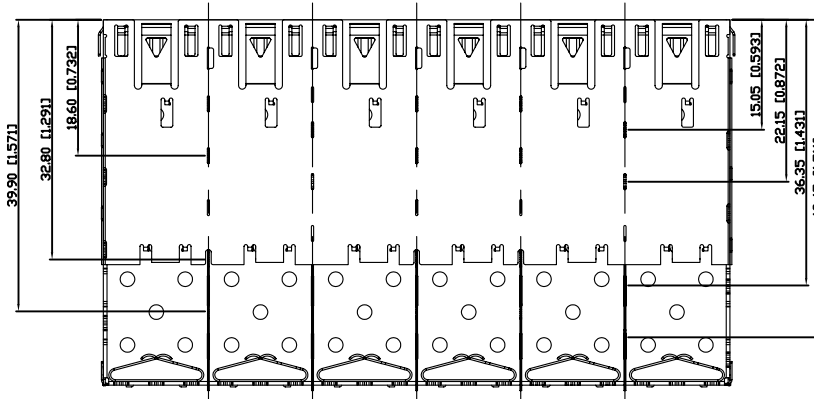
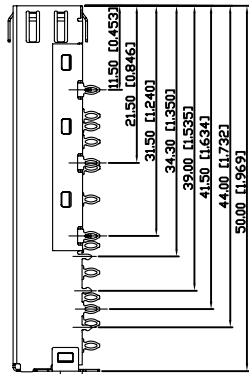
D

E

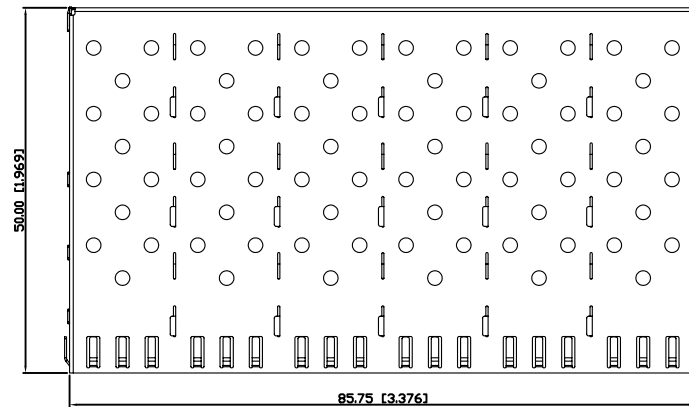
E

F

F



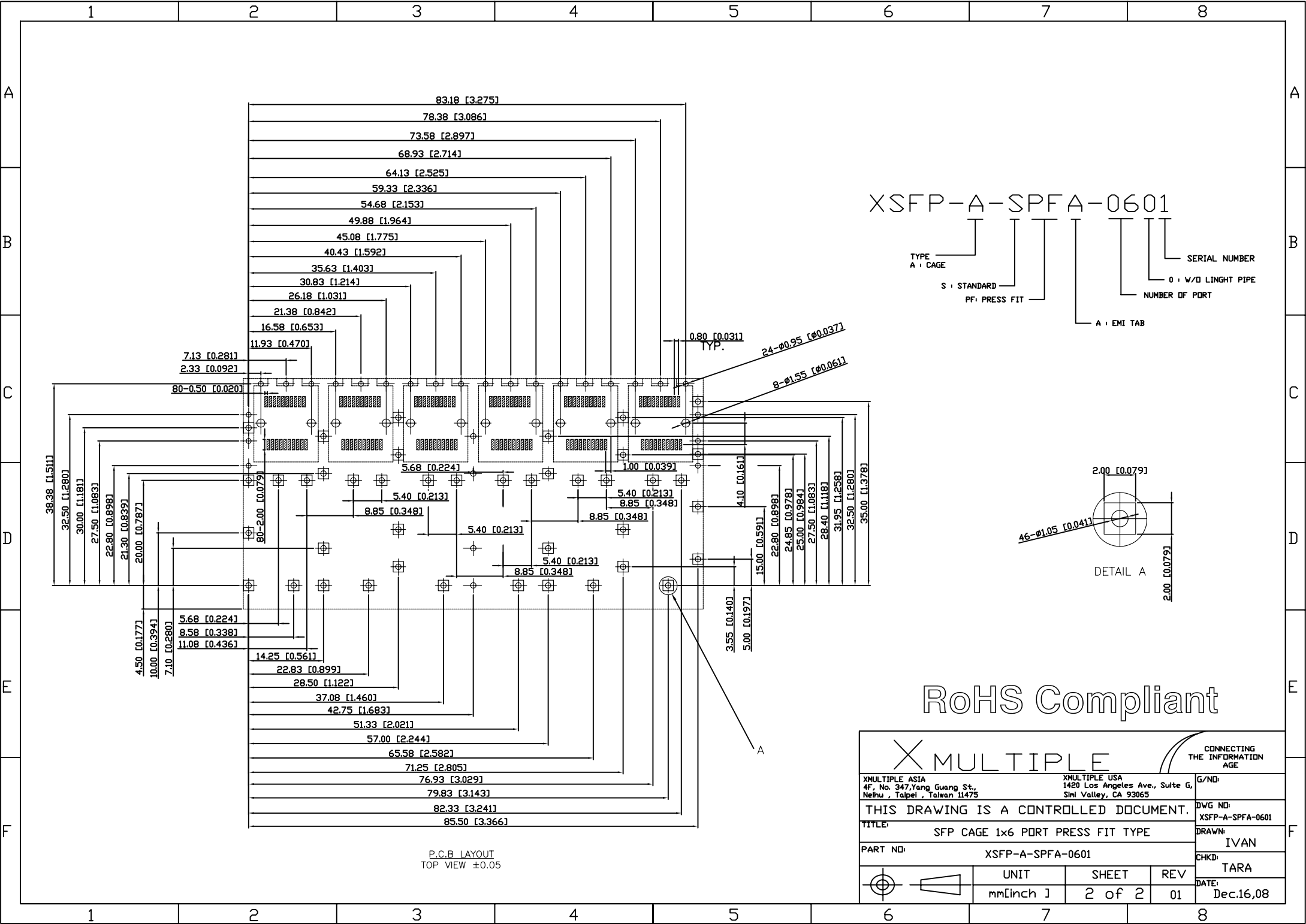
MATERIALS
 SHELL: COPPER ALLOY, NICKEL PLATED



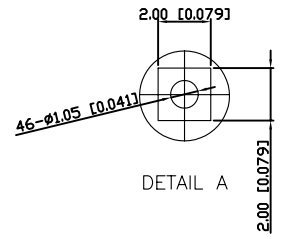
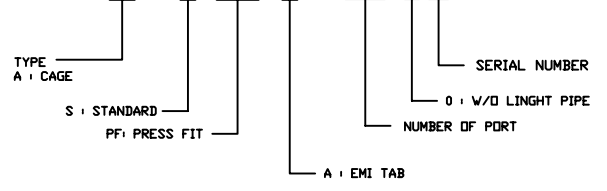
RoHS Compliant

		CONNECTING THE INFORMATION AGE	
X MULTIPLE ASIA 4F, No. 347, Yang Guang St., Neihu, Taipei, Taiwan 11475		X MULTIPLE USA 1420 Los Angeles Ave., Suite G, Simi Valley, CA 93065	
THIS DRAWING IS A CONTROLLED DOCUMENT.			
TITLE:		SFP CAGE 1x6 PORT PRESS FIT TYPE	
PART NO:		XSFP-A-SPFA-0601	
		UNIT mm [inch]	SHEET 1 of 2
		REV 01	DATE Dec.16,08

1 2 3 4 5 6 7 8



XSFP-A-SPFA-0601



RoHS Compliant

		CONNECTING THE INFORMATION AGE	
X MULTIPLE ASIA 4F, No. 347, Yang Guang St., Neihu, Taipei, Taiwan 11475		X MULTIPLE USA 1420 Los Angeles Ave., Suite G, Simi Valley, CA 93065	
THIS DRAWING IS A CONTROLLED DOCUMENT.			
TITLE: SFP CAGE 1x6 PORT PRESS FIT TYPE		DVG NO: XSFP-A-SPFA-0601	
PART NO: XSFP-A-SPFA-0601		DRAWN: IVAN	
		CHECKED: TARA	
UNIT: mm [inch]		SHEET: 2 of 2	
DATE: Dec.16,08		REV: 01	

P.C.B LAYOUT
TOP VIEW ±0.05