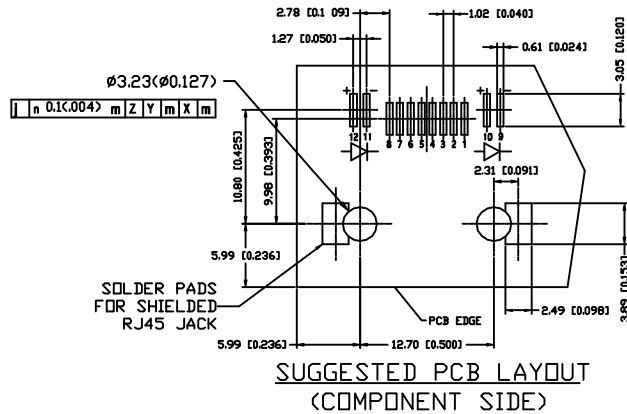
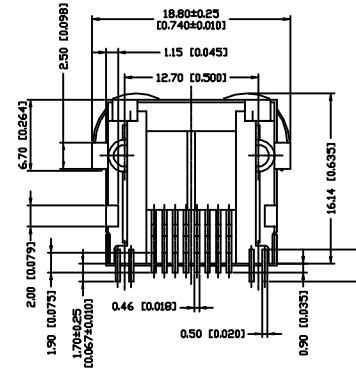
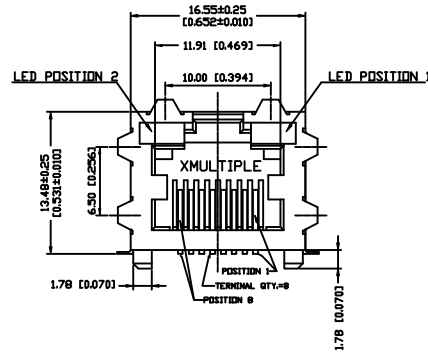
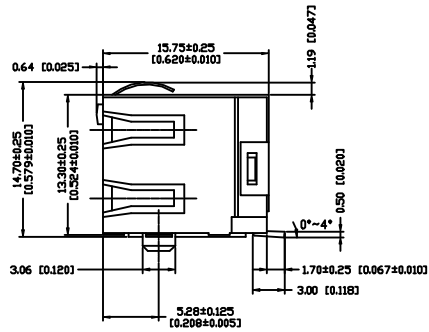
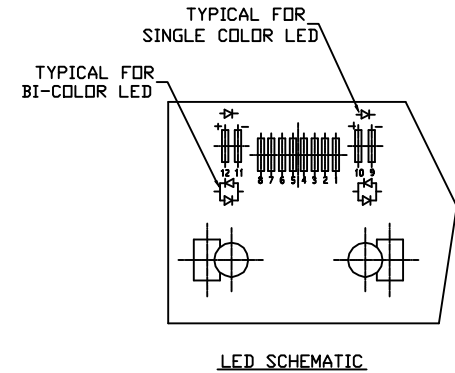


REVISIONS					
ECO	ZONE	REV	DESCRIPTION	DATE	APPROVED
		E2	REVISED RELEASE	07/31/01	Chen



SUGGESTED PCB LAYOUT
(COMPONENT SIDE)



- MATERIALS:**
- HOUSING-EMS GRIVDRY XE 3818 (NYLON-6T)
HEAT DEFLECTION TEMP.285°C
BLACK COLOR,UL94V-0
 - CONTACTS-0.35mm THICK PHOS-BRONZE PLATED
WITH HARD GOLD AND TIN/LEAD IN
SOLDER AREA.
 - SHIELD-0.20 mm THICK COPPER ALLOY,
PLATED WITH TIN/LEAD.

- ELECTRICAL:**
- CONTACT RESISTANCE: 20 MILLIOHMS MAXIMUM
 - INSULATION RESISTANCE: 500 MEGOHMS MINIMUM
 - CURRENT RATING: 1.5 AMPS
 - VOLTAGE RATING: 150 VOLTS AC
 - LED CHARACTERISTICS:
FORWARD DC CURRENT: 25 ~ 30mA
FORWARD VOLTAGE: 2.2 VOLTS TYPICAL
REVERSE VOLTAGE: 5 VOLTS
POWER DISSIPATION: GRN=105mW; YELL= 105 mW

CAVITY CONFORMS TO FCC RULES AND REGULATIONS PART 68, SUBPART F

- NOTES:** UNLESS OTHERWISE SPECIFIED
UNSPECIFIED TOLERANCE: .XX±0.25 (0.010)
.X±0.30 (0.012)
PCB LAYOUT TOLERANCE: .XX±0.05 (0.002)

XMULTIPLE		CONNECTING THE INFORMATION AGE	
XMULTIPLE ASIA 11F-1, No. 70, Fu-Shing N. Road Taipei, Taiwan, R.O.C.	XMULTIPLE USA 8808 Old County Road Newbury Park, CA 91380	S/N/C	
THIS DRAWING IS A CONTROLLED DOCUMENT.		DWG NO:	
TITLE: RJ45, Connectors, W/LED,8P,8C,Shielded SMT Type		PDCS24-VRD21	
PART NO: XRJS-S-01-8-8-X		DRAWN: Viq	
DIMENSIONS [mm]Inch		CHKD: C. TSAI	
SHEET 1 of 1		DATE 07/31/01	
REV E2			