

| | CODE | LED 2 [LEFT] | LED 1 [RIGHT] |
|---|------|--------------|---------------|
| | 0 | BLOCKED | BLOCKED |
| | 1 | YELLOW | GREEN |
| | 2 | BLOCKED | GREEN |
| | 3 | YELLOW | BLOCKED |
| | 4 | GREEN | YELLOW |
| ☆ | 5 | GREEN | GREEN |
| | 6 | YELLOW | YELLOW |
| | 7 | OR/GR | OR/GR |
| | 8 | YE/GR | YE/GR |
| | 9 | OR/GR | YELLOW |

NOTES:

- MATERIAL: HOUSING-DSM STANYL TE250F6 (NYLON-46)
HEAT DEFLECTION TEMP.290°
BLACK COLOR, UL94V-0
CONTACTS-0.35mm THICK PHOS-BRONZE PLATED
WITH 30µ" HARD GOLD AND TIN/LEAD IN
SOLDER AREA.
SHIELD-0.20mm THICK COPPER ALLOY,
PLATED WITH TIN/LEAD.
- ELECTRICAL: CONTACT RESISTANCE: 20 MILLIOHMS MAXIMUM
INSULATION RESISTANCE: 500 MEGOHMS MINIMUM
CURRENT RATING: 1.5 ANPS
VOLTAGE RATING: 150 VOLTS AC
- CAVITY CONFIRMS TO FCC RULES AND REGULATIONS
PART 68,SUBPART F.
- UNSPECIFIED TOLERANCE: XX ±0.25(0.010)
X ±0.30(0.012)

X MULTIPLE CONNECTING THE INFORMATION AGE

XMULTIPLE ASIA 4F, No. 347, Yang Guang St., Neihu Dist., Taipei, Taiwan 11473. XMULTIPLE USA 343 Country Club Drive #B 128, Sini Valley, VA 93065. G/ND:

THIS DRAWING IS A CONTROLLED DOCUMENT. DWG NO: XRJH-11-04-8-8-3-902

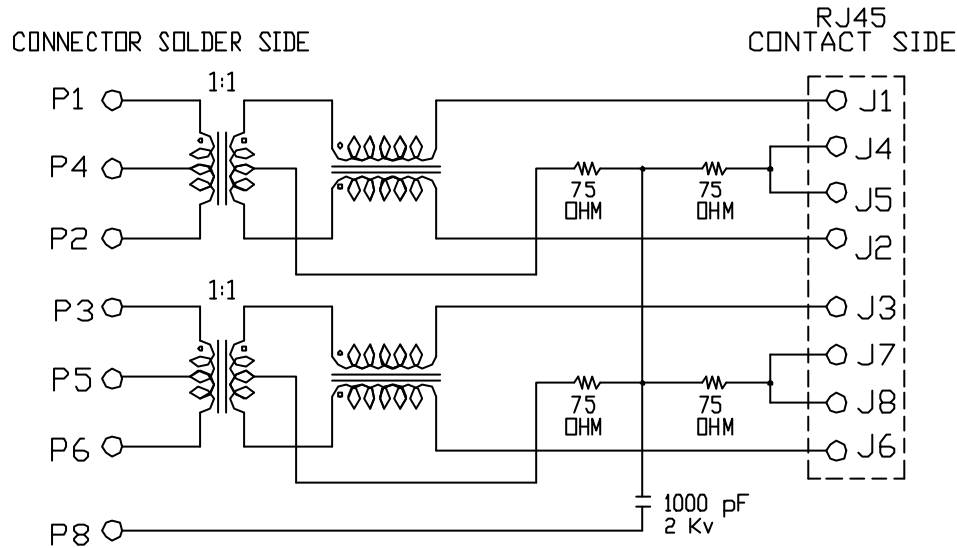
TITLE: RJ45, W/LED, with 10/100 Mbps Filter
BP,BC, Shielded, Thru Hole. DRAWN: TARA

PART NO: XRJH-11-04-8-8-5-902 CHKD: C. TSAI

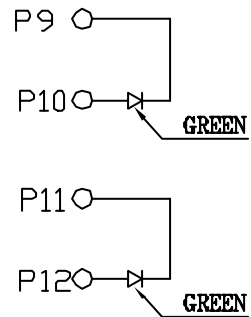
| | | |
|------------------------|--------|-----|
| DIMENSIONS mm[inch] | SHEET | REV |
| | 1 of 2 | 01 |

DATE: 19/09/03'

2. SCHEMATIC:



CONNECTOR SCHEMATIC



NOTE: CONNECT CHS GND TO PCB GROUND.

3. ELECTRICAL CHARACTERISTICS :

TEST NOTES:($25 \pm 5^\circ\text{C}$)

- 1.TR:(100KHz,0.1V);
PINS:(1-2):(J1-J2)= $1:1 \pm 3\%$
PINS:(3-6):(J3-J6)= $1:1 \pm 3\%$
- 2.LX:(100KHz,100mV,8mA, DC Bias)
PINS: (1,2),(3,6)=350uH MINIMUM
- 3.DCR:
PINS:(1-2),(J3-J6),(J1-J2)= 1.0 OHMS MAXIMUM
PINS:(3-6)=1.2 OHMS MAXIMUM
- 4.HIPOT:
PINS(1,4,2)TO(J1,J2)=1500VAC FOR 60 SECONDS
PINS(3,5,6)TO(J3,J6)=1500VAC FOR 60 SECONDS
- 5.CAPACITOR (1KHz,1V) :
SHIDLD TO (J1-J8)=1300pF MAXIMUM AND 700pF MINIMUM
6. INSERTION LOSS:
-1.0dB MAXIMUM AT 0.1MHz TO 100MHz;
7. RETURN LOSS:
-20dB MINIMUM AT 1MHz TO 30MHz;
-15dB MINIMUM AT 30MHz TO 60MHz
-10dB MINIMUM AT 60MHz TO 80MHz
8. CROSS TALK:
-30dB MINIMUM AT 1MHz TO 100MHz
9. COMMON TO COMMON MODE REJECTION:
-30dB MINIMUM AT 1MHz TO 100MHz

| X MULTIPLE | | | CONNECTING THE INFORMATION AGE | |
|--|--|---|---------------------------------|-----------|
| XMULTIPLE ASIA 4F, No. 347, Yang Guang St. Ninhu City, Taipei, Taiwan 11473. | | XMULTIPLE USA 343 Country Club Drive #3 128 Sini Valley, TX 93065 | | G/ND: |
| THIS DRAWING IS A CONTROLLED DOCUMENT. | | | | |
| TITLE: RJ45, V/LED, with 10/100 Mbps Filter BP,SE, Shielded, Thru Hole. | | | DVG NO: XRJH-11-04-8-8-5-902 | |
| PART NO: XRJH-11-04-8-8-5-902 | | | DRAWN: TARA | |
| | | | CHKD: C. TSAI | |
| | | | DATE: 19/09/03' | |
| DIMENSIONS mm[inch] | | SHEET 2 of 2 | | REV 01 |