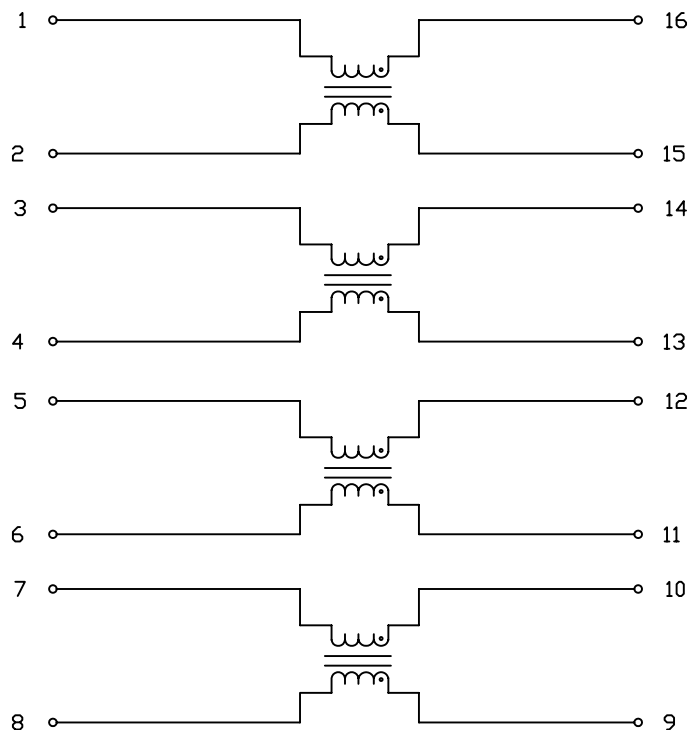


2. SCHEMATIC:



3. ELECTRICAL CHARACTERISTICS :

TEST NOTES:(25±5°C)

1.TR:(100KHz,0.1V);

PINS:(1,2):(16,15)=1:1±3%;(3,4):(14,13)=1:1±3%

PINS:(5,6):(12,11)=1:1±3%;(7,8):(10,9)=1:1±3%

2.LX:(100KHz,100mV,8mA, DC Bias)

PINS:(1,2),(3,4),(5,6),(7,8)=36uH MIN

3.DCR:

PINS:(1,2),(3,4),(5,6),(7,8)=0.35 OHMS MAX

4.HIPOT:

PINS:(1,2,...,8)TO(16,...,14)=1500VAC FOR 60 SECONDS

5.COMMON MODE ATTENUATION:

-8 dB TYP AT 0.1MHz

-24dB TYP AT 1MHz

-36dB TYP AT 10MHz

-39dB TYP AT 30MHz

-35dB TYP AT 50MHz

-29dB TYP AT 100MHz

-18dB TYP AT 300MHz

-11dB TYP AT 500MHz

- dB TYP AT 1GHz

RoHS Compliant

X MULTIPLE		THE INFORMATION AGE	
<small>XMULTIPLE ASIA 4F, No. 347, Yang Guang St., Neihu Chiu, Taipei, Taiwan 11475</small>		<small>XMULTIPLE USA 1420 Los Angeles Ave., Suite G, Simi Valley, CA 93065</small>	
THIS DRAWING IS A CONTROLLED DOCUMENT.		G/NO:	
TITLE: SURFACE MOUNT COMMON MODE CHOKES, SUITED FOR LAN AND TELECOM APPLICATIONS		DWG NO: XTFZ-M4154	
PART NO: XTFZ-M4154		DRAWN: AUSTIN	
		CHKD: JEFF	
		DATE: May,09,06	
UNIT mm[inch J	SHEET 2 of 2	REV 02	