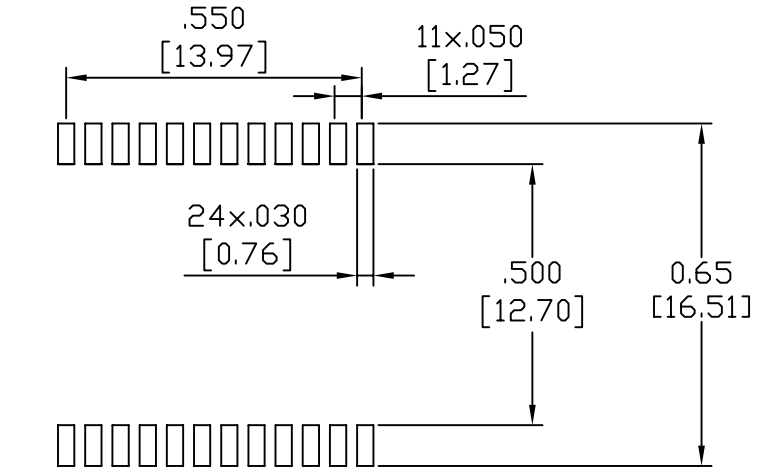
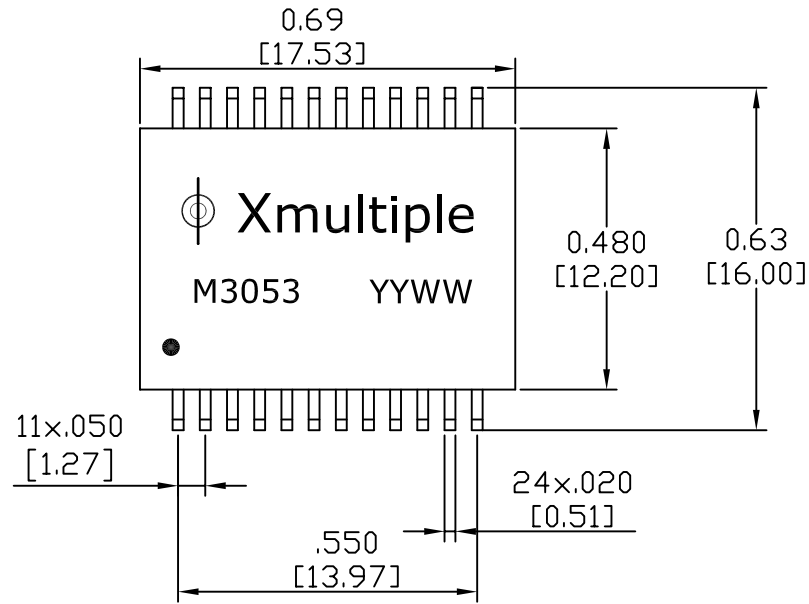
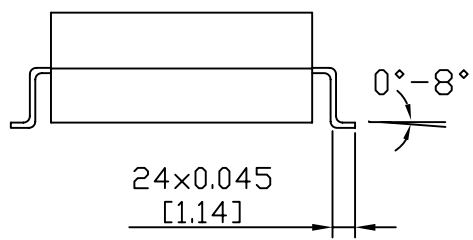
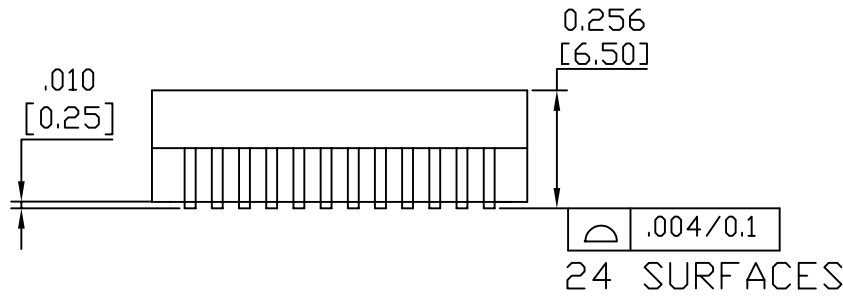


1. MECHANICAL DIMENSIONS :



SUGGESTED PAD LAYOUT

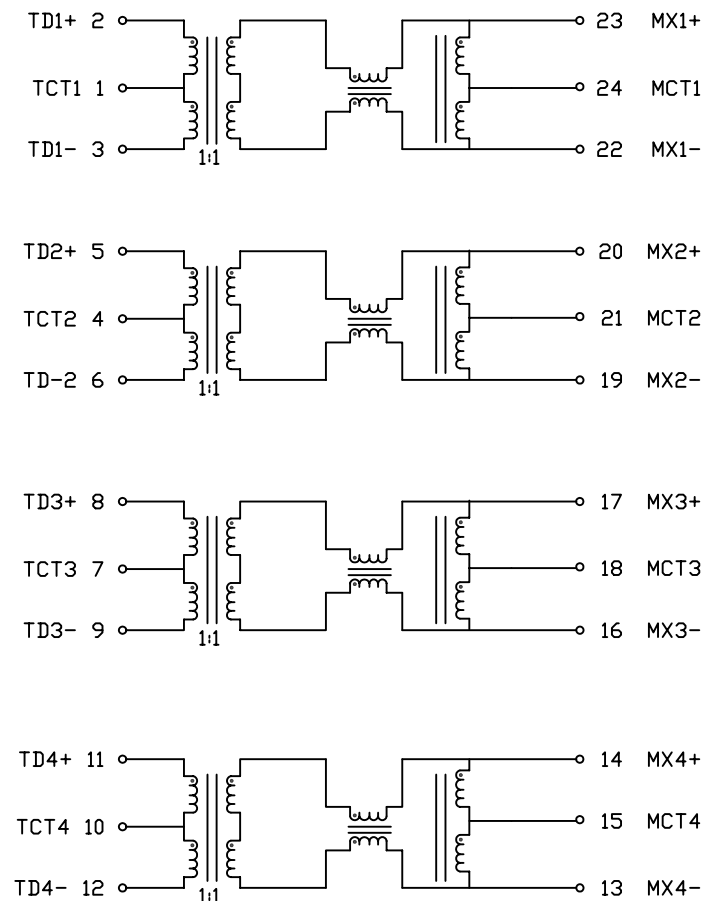


RoHS Compliant

Dimensions: Inches/mm
 Unless otherwise specified, all tolerances are $\pm \frac{.010}{0.250}$

X MULTIPLE		THE INFORMATION AGE	
XMULTIPLE ASIA 4F, No. 347, Yang Guang St., Neihu Chiu, Taipei, Taiwan 11475		XMULTIPLE USA 1420 Los Angeles Ave., Suite G, Simi Valley, CA 93065	
THIS DRAWING IS A CONTROLLED DOCUMENT.		G/NO:	
TITLE: 1000BASE-T MAGNETICS MODULES Designed to Support 1:1 Turn Ratio Transceivers		DWG NO: XTFZ-M3053	
PART NO: XTFZ-M3053		DRAWN: AUSTIN	
		CHKD: JEFF	
		DATE: May.09,06	
UNIT mm[inch]	SHEET 1 of 2	REV 02	

2. SCHEMATIC:



3. ELECTRICAL CHARACTERISTICS :

TEST NOTES: (25±5°C)

- 1.TR: (100KHz,0.1V);
PINS: (2,3): (23,22)=1:1±3%: (5,6): (20,19)=1:1±3%
- PINS: (8,9): (17,16)=1:1±3%: (11,12): (14,13)=1:1±3%
- 2.LX: (100KHz,100mV,8mA, DC Bias)
PINS: (23,22),(20,19),(17,16),(14,13)=350uH MIN
- 3.DCR:
PINS: (23,22),(20,19),(17,16),(14,13)=1.0 OHMS MAX
PINS: (2,3),(5,6),(8,9),(11,12)=1.0 OHMS MAX
- 4.HIPOT:
PINS: (1,2,3)TO(24,23,22)=1500VAC FOR 60 SECONDS
PINS: (4,5,6)TO(21,20,19)=1500VAC FOR 60 SECONDS
PINS: (7,8,9)TO(18,17,16)=1500VAC FOR 60 SECONDS
PINS: (10,11,12)TO(15,14,13)=1500VAC FOR 60 SECONDS
- 5.INSERTION LOSS:
-1.1dB MAXIMUM AT 0.1MHz TO 100MHz;
- 6.RETURN LOSS:
-18dB MINIMUM AT 1MHz TO 40MHz;
-14.4dB MINIMUM AT 40MHz TO 50MHz;
-13.1dB MINIMUM AT 50MHz TO 60MHz;
-10dB MINIMUM AT 60MHz TO 100MHz
- 7.CROSS TALK:
-40dB MINIMUM AT 1MHz TO 30MHz;
-35dB MINIMUM AT 30MHz TO 60MHz;
-33dB MINIMUM AT 60MHz TO 100MHz;
- 8.DIFFERENTIAL TO COMMON MODE REJECTION:
-38dB MINIMUM AT 1MHz TO 30MHz;
-37dB MINIMUM AT 30MHz TO 60MHz;
-30dB MINIMUM AT 60MHz TO 100MHz

RoHS Compliant

X MULTIPLE		THE INFORMATION AGE	
XMULTIPLE ASIA 4F, No. 347, Yang Guang St., Neihu Chiu, Taipei, Taiwan 11475		XMULTIPLE USA 1420 Los Angeles Ave., Suite G, Simi Valley, CA 93065	
THIS DRAWING IS A CONTROLLED DOCUMENT.			
TITLE:		1000BASE-T MAGNETICS MODULES Designed to Support 1:1 Turn Ratio Transceivers	
PART NO:		XTFZ-M3053	
		UNIT	SHEET
		mm[inch]	2 of 2
		REV	DATE:
		02	May.09,06
		DWG NO:	XTFZ-M3053
		DRAWN:	AUSTIN
		CHKD:	JEFF