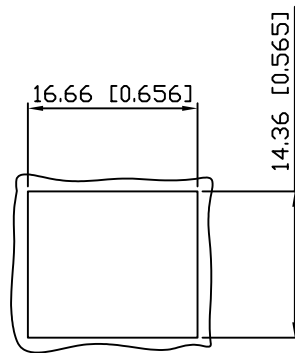
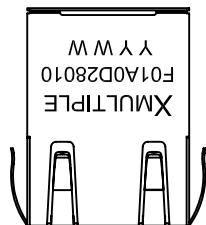
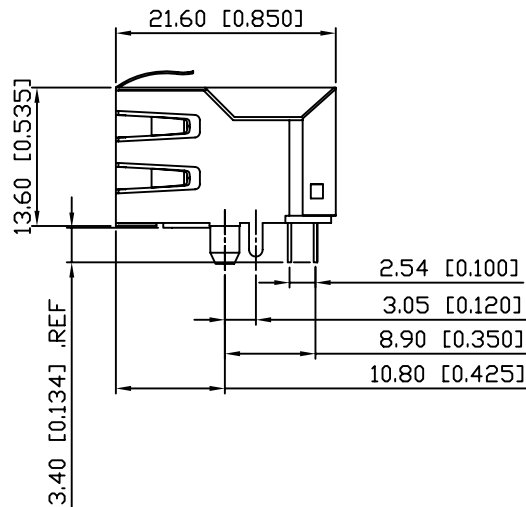
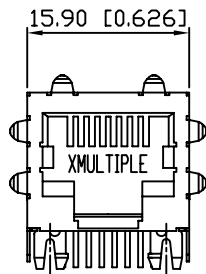


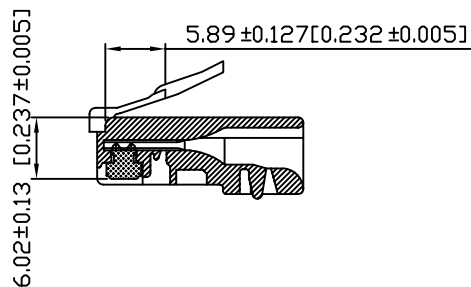
1. MECHANICAL DIMENSIONS :



RECOMMENDED  
PANEL CUTOUT DIMENSION



RECOMMENDED PLUG DIMENSION:



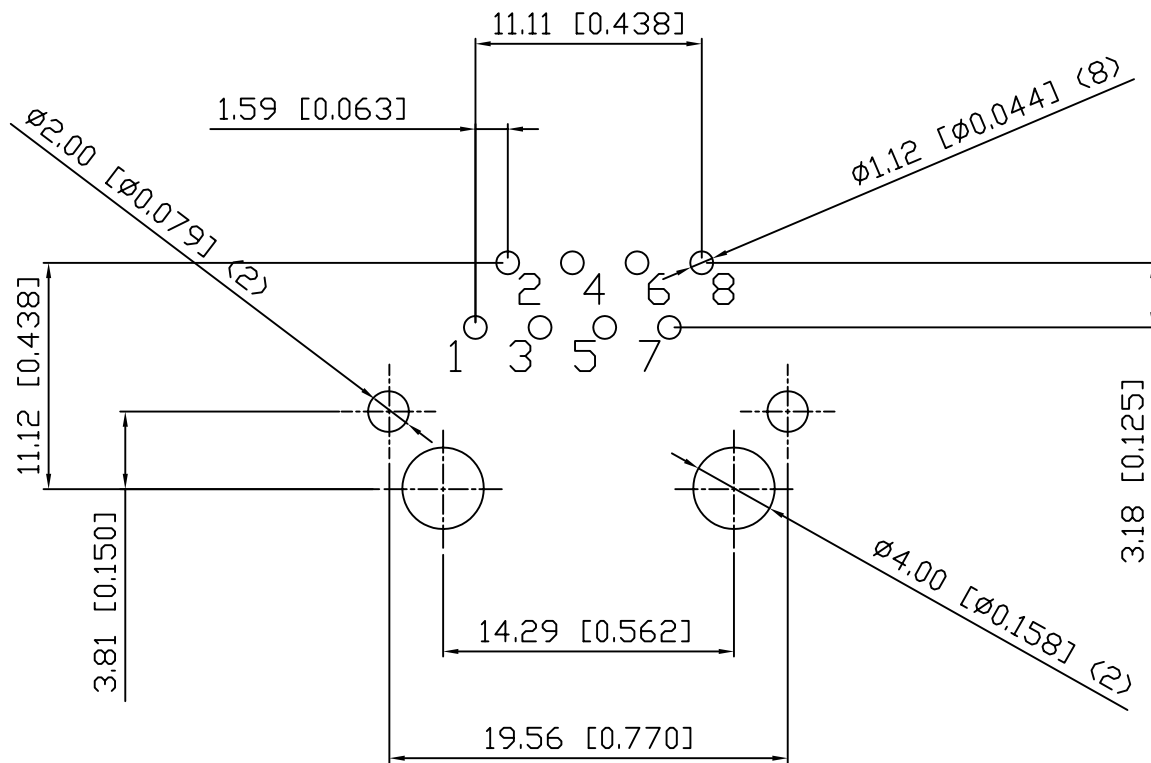
NOTES:

1. MATERIALS:  
HOUSING-NYLON POLYESTER UL94V-0  
MIXED GLASS FIBER.  
STANDARD COLOR-BLACK.  
CONTACTS-0.35mm THICK PHOS-BRONZE PLATED  
WITH 30u" GOLD AND TIN  
IN SOLDER AREA.  
SHIELD-0.25mm THICK COPPER ALLOY,  
PLATED WITH NICKEL.
2. CAVITY CONFIRMS TO FCC RULES AND REGULATIONS  
PART 68,SUBPART F.
3. UNSPECIFIED TOLERANCE: .XX ±0.25[0.010]  
.X ±0.30[0.012]

RoHS Compliant

		CONNECTING THE INFORMATION AGE	
XMULTIPLE ASIA 4F, No. 347, Yang Guang St., Neihu Chiu, Taipei, Taiwan 11475		XMULTIPLE USA 1420 Los Angeles Ave., Suite G Simi Valley, CA 93065	
THIS DRAWING IS A CONTROLLED DOCUMENT.		DVG NO: XRJF-01A-0-D28-010	
TITLE: SINGLE PORT, RJ45, SHIELDED, WITHOUT LED WITH TRANSFORMER, SIDE ENTRY PCB JACK		DRAWN: RUNES	
PART NO: XRJF-01A-0-D28-010		CHKD: JEFF	
		UNIT mm[inch ]	SHEET 1 of 3
		REV 01	DATE: Apr.19,06

2. PCB LAYOUT :



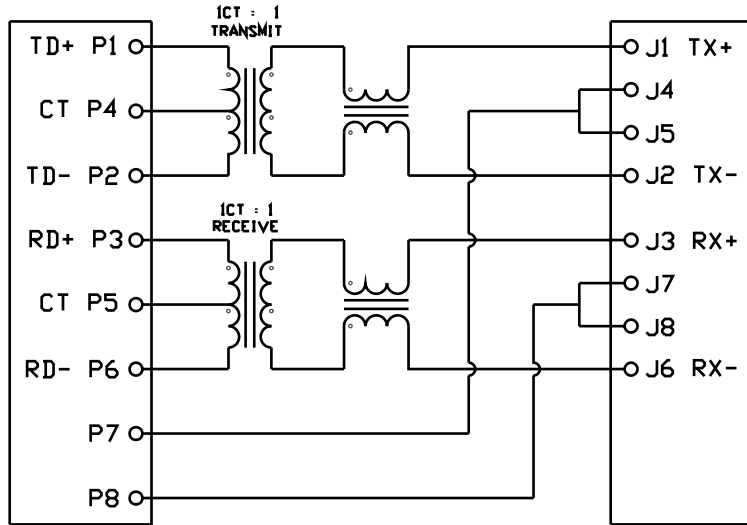
SUGGESTED PCB LAYOUT  
(TOP VIEW)

RoHS Compliant

		CONNECTING THE INFORMATION AGE		
				X MULTIPLE ASIA 4F, No. 347, Yang Guang St., Neihu Chiu, Taipei, Taiwan 11475
THIS DRAWING IS A CONTROLLED DOCUMENT.				DVG NO: XRJF-01A-0-D28-010
TITLE: SINGLE PORT, RJ45, SHIELDED, WITHOUT LED WITH TRANSFORMER, SIDE ENTRY PCB JACK				DRAWN: RUNES
PART NO: XRJF-01A-0-D28-010				CHKD: JEFF
		UNIT mm [inch]	SHEET 2 of 3	REV 01
DATE: Apr.19,06				

CONNECTOR SOLDER SIDE

RJ45 CONTACT SIDE



TEST NOTES:(25±5°C)

1.TR:(100KHz,0.1V);

PINS:(P3-P6):(J3-J6)=1:1±3%

2.LX:(100KHz,100mV,8mA, DC Bias)

PINS: (P1,P2),(P3,P6)=350µH MINIMUM

3.DCR:

PINS:(P1-P2),(J1-J2),(J3-J6)= 1.0 ΩHMS MAXIMUM

.(P3-P6)=1.2 ΩHMS MAXIMUM

4.HIPOT:

PINS(P1,P4,P2)TO(J1,J2)=1500VAC FOR 60 SECONDS

PINS(P3,P5,P6)TO(J3,J6)=1500VAC FOR 60 SECONDS

5.INSERTION LOSS:

-1.0dB MAXIMUM AT 0.3MHz TO 100MHz;

6.RETURN LOSS:

-20dB MINIMUM AT 1MHz TO 30MHz;

-15dB MINIMUM AT 30MHz TO 60MHz

-10dB MINIMUM AT 60MHz TO 80MHz

7.CROSS TALK:

-30dB MINIMUM AT 1MHz TO 100MHz

8.COMMON TO COMMON MODE REJECTION:

-30dB MINIMUM AT 1MHz TO 100MHz

XRJF-01A-0-D28-010

PRODUCT SERIES

F : TAB DOWN WITHOUT LED

NUMBER OF PORTS

MECHANICAL TYPE  
01A : 1 PORT FOR XRJF OR XRJG  
W/HORIZONTAL LED PIN

LED COLOR OPTION

PROTOCOL TYPE

D : 10/100 Mbps, 4 CORE

CIRCUIT TYPE

SPECIAL CODE

0 : STANDARD

SHIELDED TYPE

1 : Y=3.05mm, EMI FINGER  
ON ALL SIDE

LED POLARITY

0 : W/O LED

