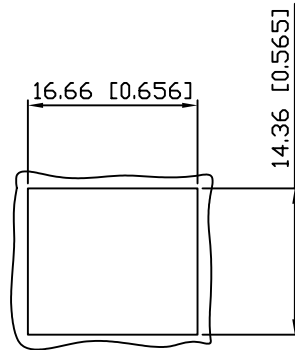


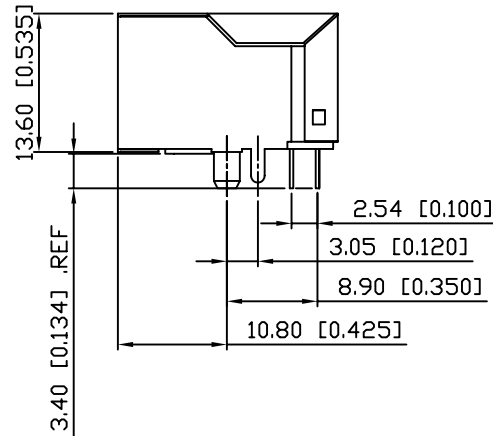
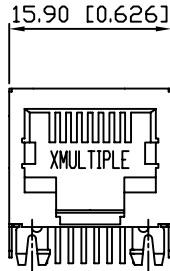
1. MECHANICAL DIMENSIONS :



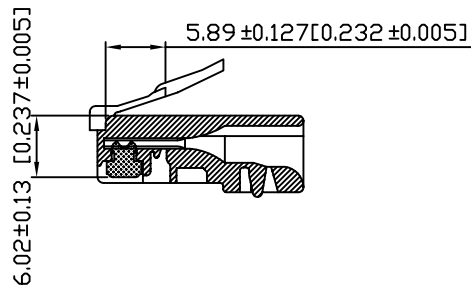
RECOMMENDED
PANEL CUTOUT DIMENSION

NOTES:

1. MATERIALS:
HOUSING-NYLON POLYESTER UL94V-0
MIXED GLASS FIBER.
STANDARD COLOR-BLACK.
CONTACTS-0.35mm THICK PHOS-BRONZE PLATED
WITH 30u" GOLD AND TIN
IN SOLDER AREA.
SHIELD-0.25mm THICK COPPER ALLOY,
PLATED WITH NICKEL.
2. CAVITY CONFIRMS TO FCC RULES AND REGULATIONS
PART 68,SUBPART F.
3. UNSPECIFIED TOLERANCE: .XX ±0.25[0.010]
.X ±0.30[0.012]



RECOMMENED PLUG DIMENSION:



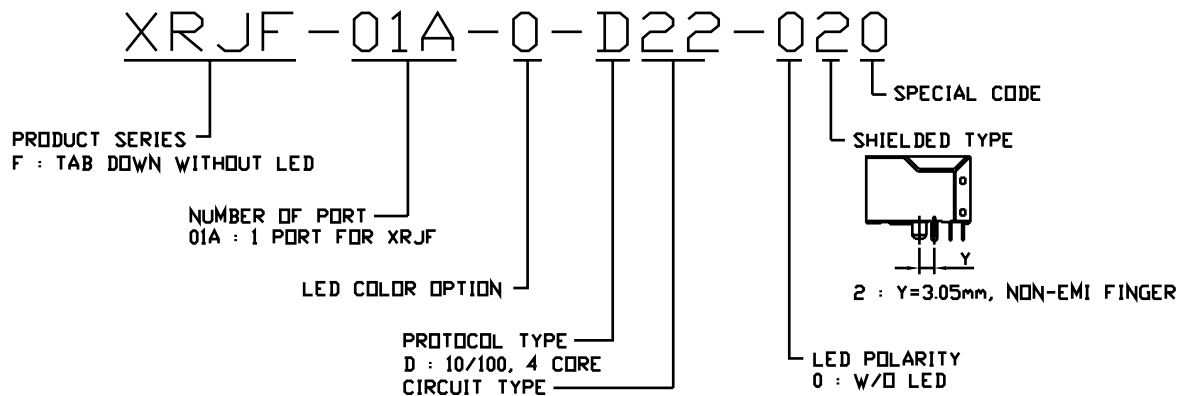
RoHS Compliant

MULTIPLE ASIA 4F, No. 347, Yang Guang St., Neihu Chiu, Taipei, Taiwan 11475		MULTIPLE USA 1420 Los Angeles Ave., Suite G, Simi Valley, CA 93065	
THIS DRAWING IS A CONTROLLED DOCUMENT.			
TITLE: SINGLE PORT, RJ45, SHIELDED, WITHOUT LED WITH TRANSFORMER, SIDE ENTRY PCB JACK			
PART NO: XRJF-01A-0-D22-020		DVG NO: XRJF-01A-0-D22-020	
		DRAWN: AUSTIN	
UNIT mm[inch]		SHEET 1 of 3	
DATE:		REV 01	
DATE: Apr.20,06		CHKD: JEFF	

PINS:(P1-P2),(J1-J2),(J3-J6)= 1.0 OHMS MAXIMUM
 PINS:(P3-P6)=1.2 OHMS MAXIMUM

J,P5,P6) TO (J3,J6)=1500VAC FOR 60 SECONDS

- 5.INSERTION LOSS:
 -1.0dB MAXIMUM AT 0.3MHz TO 100MHz;
- 6.RETURN LOSS:
 -20dB MINIMUM AT 1MHz TO 30MHz;
 -15dB MINIMUM AT 30MHz TO 60MHz
 -10dB MINIMUM AT 60MHz TO 80MHz
- 7.CROSS TALK:
 -30dB MINIMUM AT 1MHz TO 100MHz
- 8.COMMON TO COMMON MODE REJECTION:
 -30dB MINIMUM AT 1MHz TO 100MHz



<h1>X MULTIPLE</h1>		CONNECTING THE INFORMATION AGE	
X MULTIPLE ASIA 4F. No. 347, Yang Guang St., Neihu Chiu, Taipei, Taiwan 11475		X MULTIPLE USA 1420 Los Angeles Ave., Suite G Simi Valley, CA 93065	
THIS DRAWING IS A CONTROLLED DOCUMENT.		G/NO:	
TITLE: SINGLE PORT, RJ45, SHIELDED, WITHOUT LED WITH TRANSFORMER, SIDE ENTRY PCB JACK		DWG NO: XRJF-01A-0-D22-020	
PART NO: XRJF-01A-0-D22-020		DRAWN: AUSTIN	
		UNIT	SHEET
		mm/inch 1	3 of 3
		REV	DATE
		01	Apr.20.06