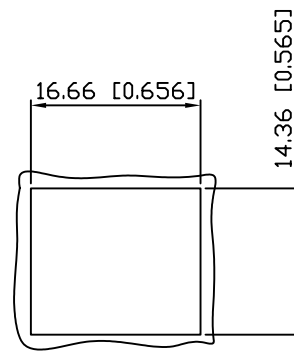
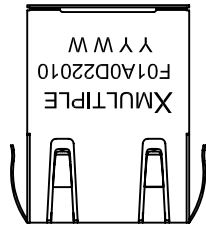
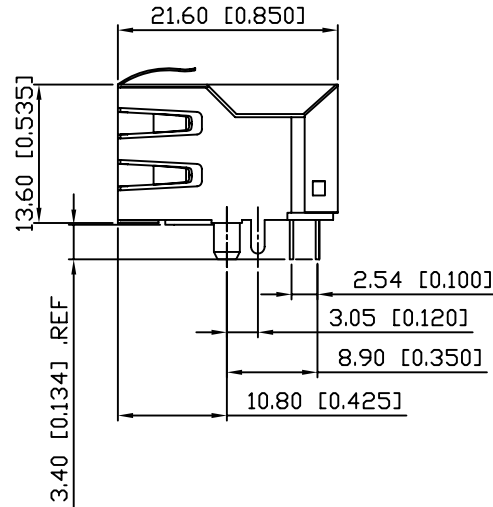
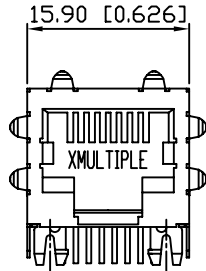


1. MECHANICAL DIMENSIONS :



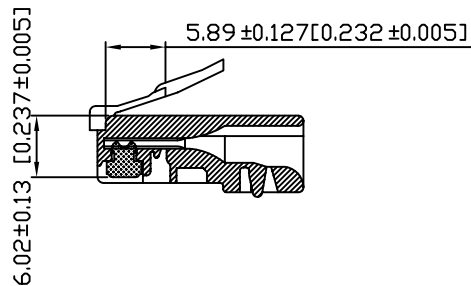
RECOMMENDED
PANEL CUTOUT DIMENSION



NOTES:

1. MATERIALS:
HOUSING-NYLON POLYESTER UL94V-0
MIXED GLASS FIBER.
STANDARD COLOR-BLACK.
CONTACTS-0.35mm THICK PHOS-BRONZE PLATED
WITH 30u" GOLD AND TIN
IN SOLDER AREA.
SHIELD-0.25mm THICK COPPER ALLOY,
PLATED WITH NICKEL.
2. CAVITY CONFIRMS TO FCC RULES AND REGULATIONS
PART 68,SUBPART F.
3. UNSPECIFIED TOLERANCE: .XX ±0.25[0.010]
.X ±0.30[0.012]

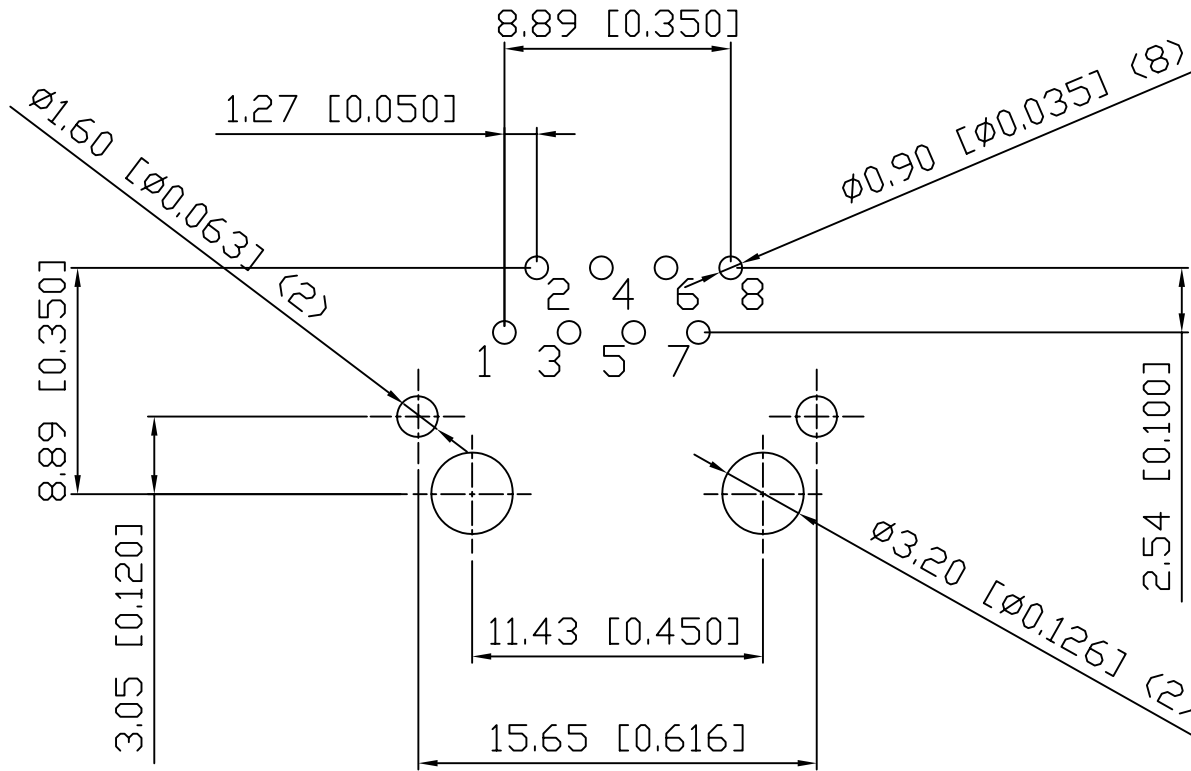
RECOMMENED PLUG DIMENSION:



RoHS Compliant

		CONNECTING THE INFORMATION AGE		
				MULTIPLE ASIA 4F, No. 347, Yang Guang St., Neihu Chiu, Taipei, Taiwan 11475
THIS DRAWING IS A CONTROLLED DOCUMENT.				DVG NO: XRJF-01A-0-D22-010
TITLE: SINGLE PORT, RJ45, SHIELDED, WITHOUT LED WITH TRANSFORMER, SIDE ENTRY PCB JACK				DRAWN: AUSTIN
PART NO: XRJF-01A-0-D22-010				CHKD: JEFF
	UNIT mm[inch]	SHEET 1 of 3	REV 01	DATE: Apr.03,06

2. PCB LAYOUT :



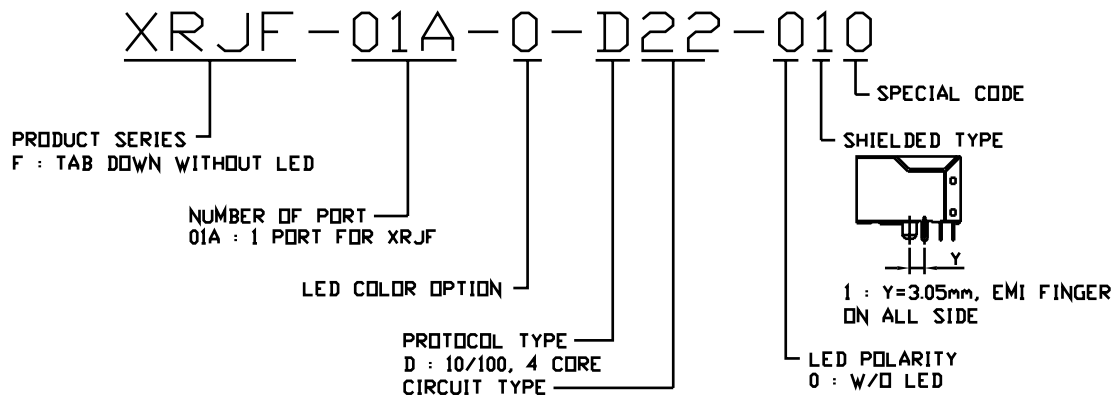
SUGGESTED PCB LAYOUT
(TOP VIEW)

RoHS Compliant

		CONNECTING THE INFORMATION AGE		
				X MULTIPLE ASIA 4F, No. 347, Yang Guang St., Neihu Chiu, Taipei, Taiwan 11475
THIS DRAWING IS A CONTROLLED DOCUMENT.				DVG NO: XRJF-01A-0-D22-010
TITLE: SINGLE PORT, RJ45, SHIELDED, WITHOUT LED WITH TRANSFORMER, SIDE ENTRY PCB JACK				DRAWN: AUSTIN
PART NO: XRJF-01A-0-D22-010				CHKD: JEFF
		UNIT mm[inch]	SHEET 2 of 3	REV 01
DATE: Apr.03,06				

7.CROSS TALK:

MHz



X MULTIPLE				CONNECTING THE INFORMATION AGE	
XMULTIPLE ASIA 4F, No. 347, Yang Guang St. Neihu Chiu, Taipei, Taiwan 11475		XMULTIPLE USA 1420 Los Angeles Ave., Suite G Simi Valley, CA 93065		G/NO:	
THIS DRAWING IS A CONTROLLED DOCUMENT.				DWG NO: XRJF-01A-0-D22-010	
TITLE: SINGLE PORT, RJ45, SHIELDED, WITHOUT LED WITH TRANSFORMER, SIDE ENTRY PCB JACK				DRAWN: AUSTIN	
PART NO: XRJF-01A-0-D22-010				CHKD: JEFF	
		UNIT mm/inch 1	SHEET 3 of 3	REV 01	DATE: Apr.03.06