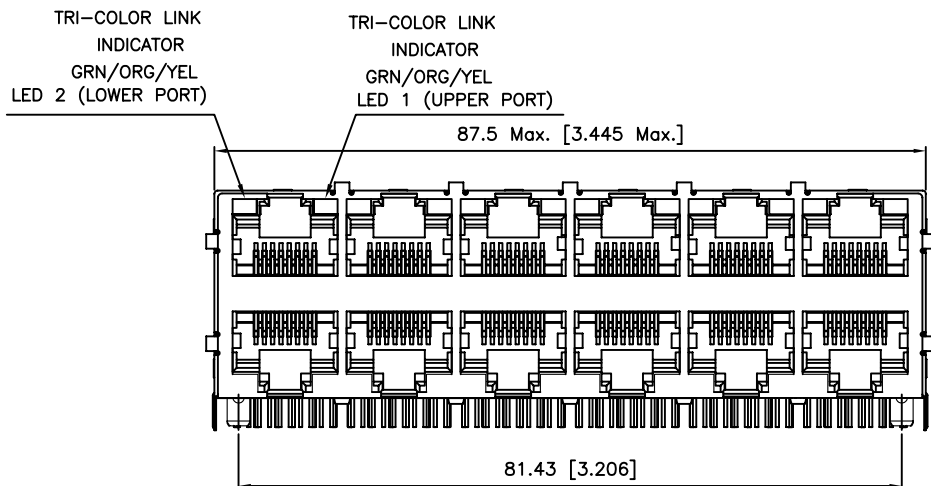
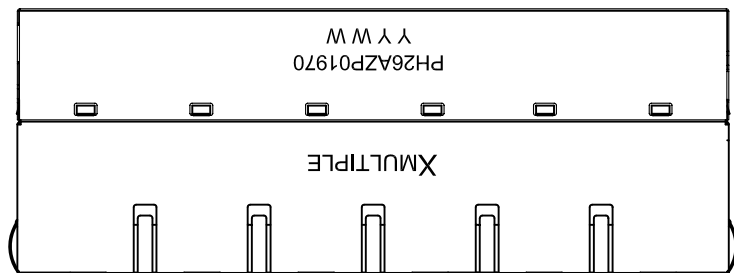
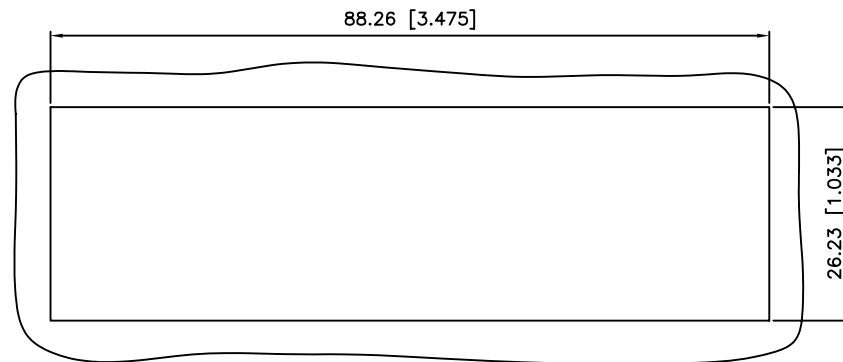
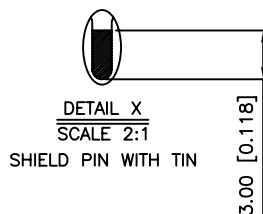
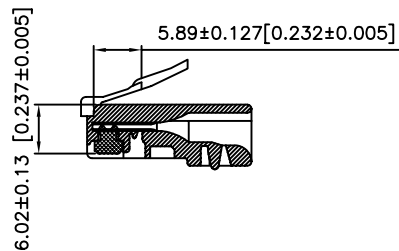


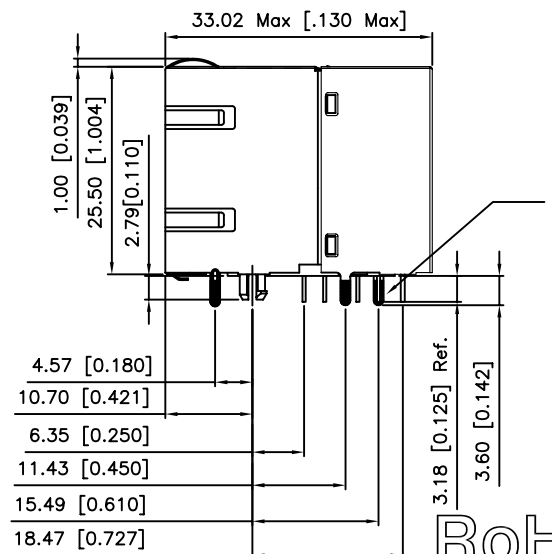
1. MECHANICAL DIMENSIONS :



RECOMMENED PLUG DIMENSION:



RECOMMENDED PANEL CUTOUT DIMENSION



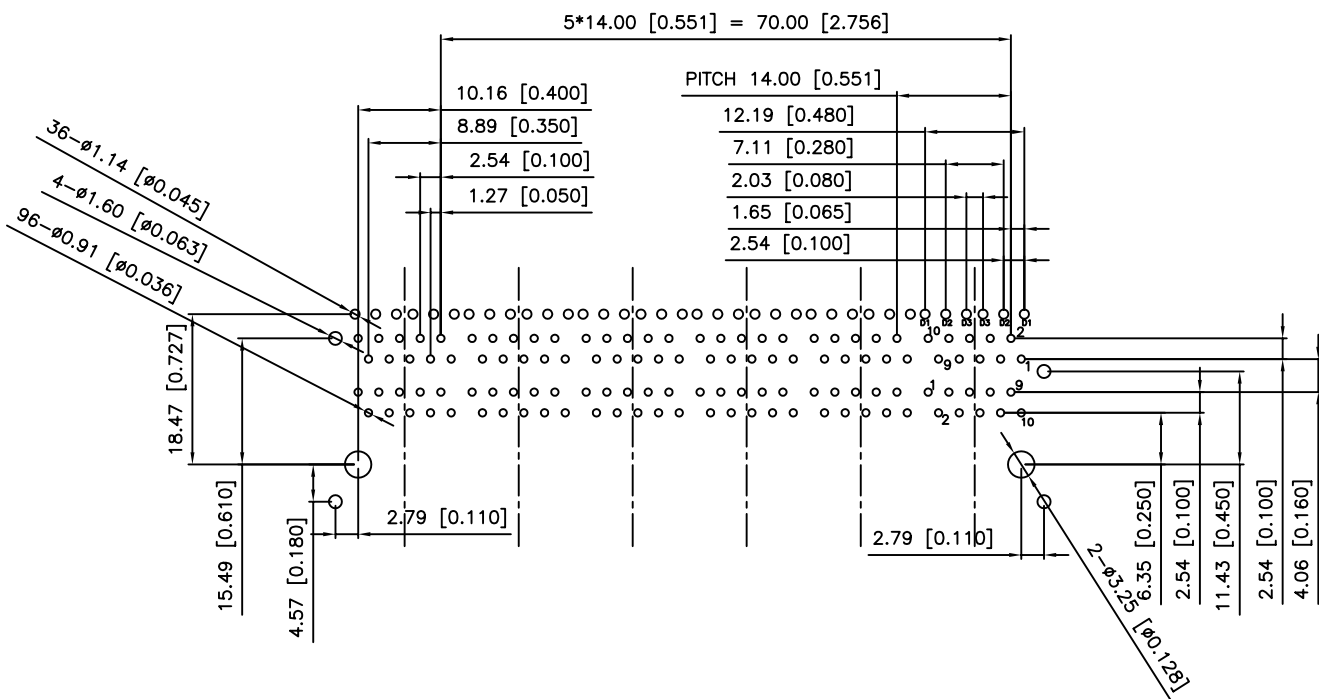
NOTES:

1. MATERIAL:
HOUSING—PBT POLYESTER UL-94V-0
MIXED GLASS FIBER.
STANDARD COLOR—BLACK
CONTACTS—0.35mm THICK PHOS—BRONZE PLATED
WITH 15u" HARD GOLD AND TIN IN
SOLDER AREA, AND NICKEL
PLATING IN ALL AREA.
SHIELD— SUS301 T=0.20 mm WITH TIN ON
TERMINATION END.
2. OPERATING TEMPERATURE: 0°C~+70°C
3. CAVITY CONFORMS TO FCC RULES AND REGULATIONS
PART 68,SUBPART F.
4. UNSPECIFIED TOLERANCE: .XX ±0.25[0.010]
.X ±0.30[0.012]

RoHS Compliant

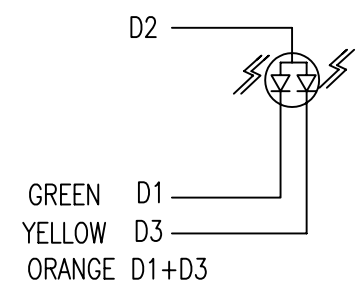
<h1>X MULTIPLE</h1>		CONNECTING THE INFORMATION AGE	
X MULTIPLE ASIA 4F, No. 347, Yang Guang St., Neihu, Taipei, Taiwan 11475		X MULTIPLE USA 1420 Los Angeles Ave., Suite G, Simi Valley, CA 93065	
THIS DRAWING IS A CONTROLLED DOCUMENT.		G/NO:	
TITLE: Stacked RJ45, W/LED, with 10/100 Mbps LAN Magnetics 8P,10C, Shielded, FOR P.O.E.		DWG NO: XPJH-26A-Z-P01-970	
PART NO: XPJH-26A-Z-P01-970		DRAWN: LEON	
		CHKD: JEFF	
		DATE: Mar.26,07	
UNIT: mm[inch]		SHEET: 1 of 3	
		REV: 01	

2. PCB LAYOUT :



SUGGESTED PCB LAYOUT
TOP VIEW
DIMENSIONAL TOLERANCE: .XX ±0.08[0.003]

3. LED CONFIGURATION :

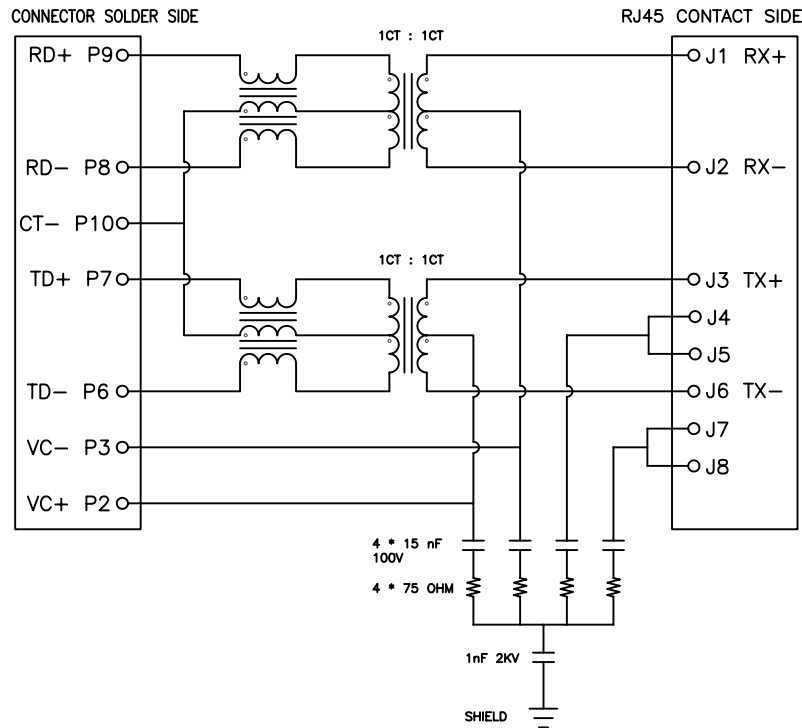


Color	Lens Color	Vf(v) @20mA		Iv(mcd) @10mA		Viewing angle 2θ 1/2
		Min	Max	Min	Typ	
Yellow	White Diffused	1.7	2.8	3.0	6.0	116
Green		1.7	2.8	3.5	6.0	116

RoHS Compliant

XMULTIPLE		CONNECTING THE INFORMATION AGE	
XMULTIPLE ASIA 4F, No. 347, Yang Guang St., Neihu, Taipei, Taiwan 11475		XMULTIPLE USA 1420 Los Angeles Ave., Suite G, Simi Valley, CA 93065	
THIS DRAWING IS A CONTROLLED DOCUMENT.		G/NO:	
TITLE: Stacked RJ45, W/LED, with 10/100 Mbps LAN Magnetics 8P,10C, Shielded, FOR P.O.E.		DWG NO: XPJH-26A-Z-P01-970	
PART NO: XPJH-26A-Z-P01-970		DRAWN: LEON	
		CHKD: JEFF	
		DATE: Mar.26,07	
UNIT	SHEET	REV	
mm[inch]	2 of 3	01	

4. SCHEMATIC:



5. ELECTRICAL CHARACTERISTICS :

TEST NOTES:(25±5°C)

1.TR:(100KHz,0.1V);

PINS:(P7-P6):(J3-J6)=1:1±3%

PINS:(P9-P8):(J1-J2)=1:1±3%

2.LX:(100KHz,100mV,8mA, DC Bias)

PINS:(P7,P6),(P9,P8)=350uH MINIMUM

3.DCR:

PINS:(J1-J2),(J3-J6)= 1.2 OHMS MAXIMUM

4.HIPOT:

PINS(P9,P10,P8)TO(J1,J2)=1500VAC FOR 60 SECONDS

PINS(P7,P10,P6)TO(J3,J6)=1500VAC FOR 60 SECONDS

5.INSERTION LOSS:

-1.0dB MAXIMUM AT 0.3MHz TO 100MHz;

6.RETURN LOSS:

-20dB MINIMUM AT 1MHz TO 30MHz;

-15dB MINIMUM AT 30MHz TO 60MHz

-10dB MINIMUM AT 60MHz TO 80MHz

7.CROSS TALK:

-30dB MINIMUM AT 1MHz TO 100MHz

8.COMMON TO COMMON MODE REJECTION:

-30dB MINIMUM AT 1MHz TO 100MHz

XPJH-26A-Z-P01-970

PRODUCT SERIES
XPJH : LATCH UP AND STACKED
FOR PoE TYPE

NUMBER OF PORTS
MECHANICAL TYPE
26A : 2*6 PORT, HORIZONTAL PIN,
LED ON TOP PORT ONLY OR
W/O LED

LED COLOR OPTION

PROTOCOL TYPE
P : 10/100 Mbps, 4 CORE
FOR PoE

CIRCUIT TYPE

SPECIAL CODE
0 : STANDARD

SHIELDED TYPE
7 : EMI FINGER ON ALL SIDE

LED POLARITY
9 : TRI-COLOR, TRI-COLOR

RoHS Compliant

XMULTIPLE		CONNECTING THE INFORMATION AGE	
XMULTIPLE ASIA 4F, No. 347, Yang Guang St., Neihu, Taipei, Taiwan 11475		XMULTIPLE USA 1420 Los Angeles Ave., Suite G, Simi Valley, CA 93065	
G/NO:		DWG NO:	
THIS DRAWING IS A CONTROLLED DOCUMENT.		XPJH-26A-Z-P01-970	
TITLE: Stacked RJ45, W/LED, with 10/100 Mbps LAN Magnetics 8P,10C, Shielded, FOR P.O.E.		DRAWN: LEON	
PART NO: XPJH-26A-Z-P01-970		CHKD: JEFF	
DATE: Mar.26,07			
UNIT mm[inch]		SHEET 3 of 3	
		REV 01	