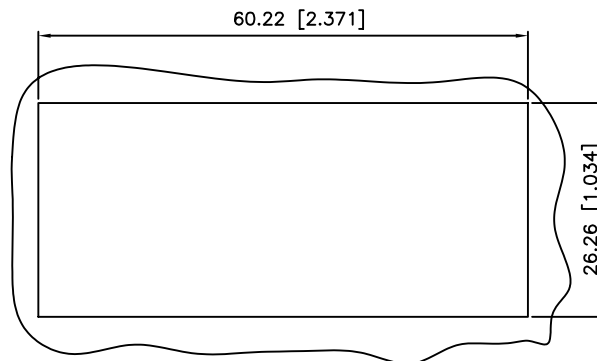
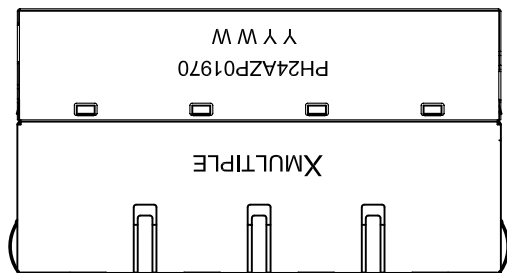
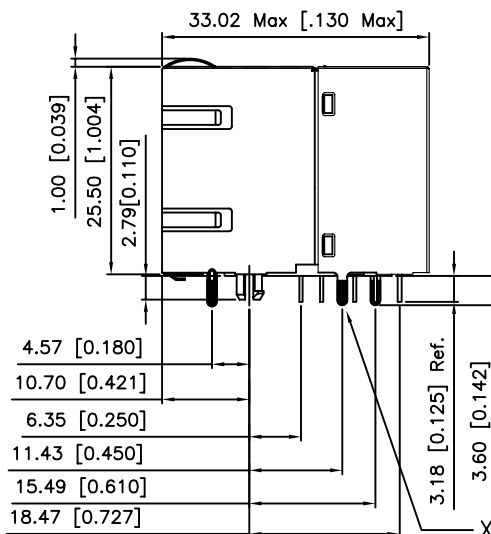
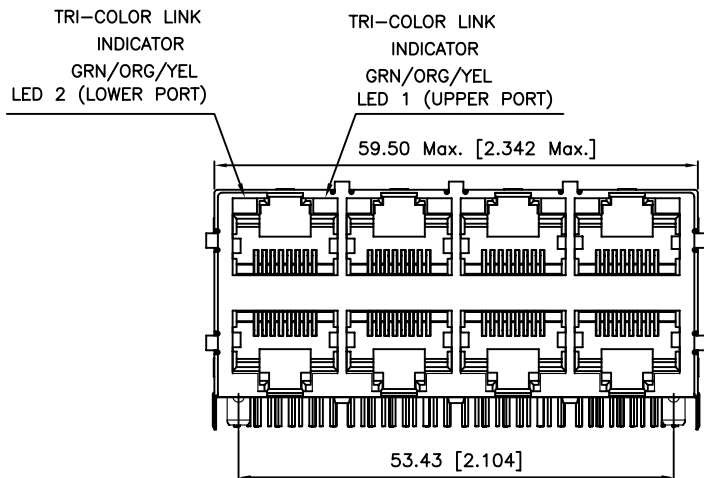


1. MECHANICAL DIMENSIONS :



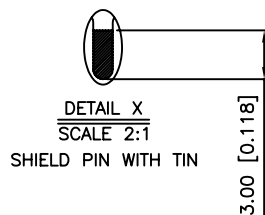
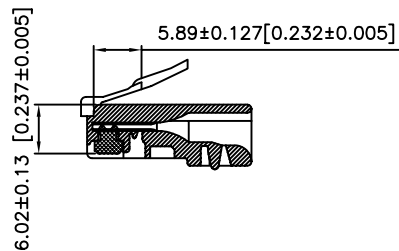
RECOMMENDED
PANEL CUTOUT DIMENSION



NOTES:

- MATERIAL:
HOUSING-PBT POLYESTER UL-94V-0
MIXED GLASS FIBER.
STANDARD COLOR-BLACK
CONTACTS-0.35mm THICK PHOS-BRONZE PLATED
WITH 15u" GOLD AND TIN IN
SOLDER AREA, AND NICKEL
PLATING IN ALL AREA.
SHIELD- SUS301 T=0.20 mm WITH TIN ON
TERMINATION END.
- OPERATING TEMPERATURE: 0°C~+70°C
- CAVITY CONFORMS TO FCC RULES AND REGULATIONS
PART 68,SUBPART F.
- UNSPECIFIED TOLERANCE: .XX ±0.25[0.010]
.X ±0.30[0.012]

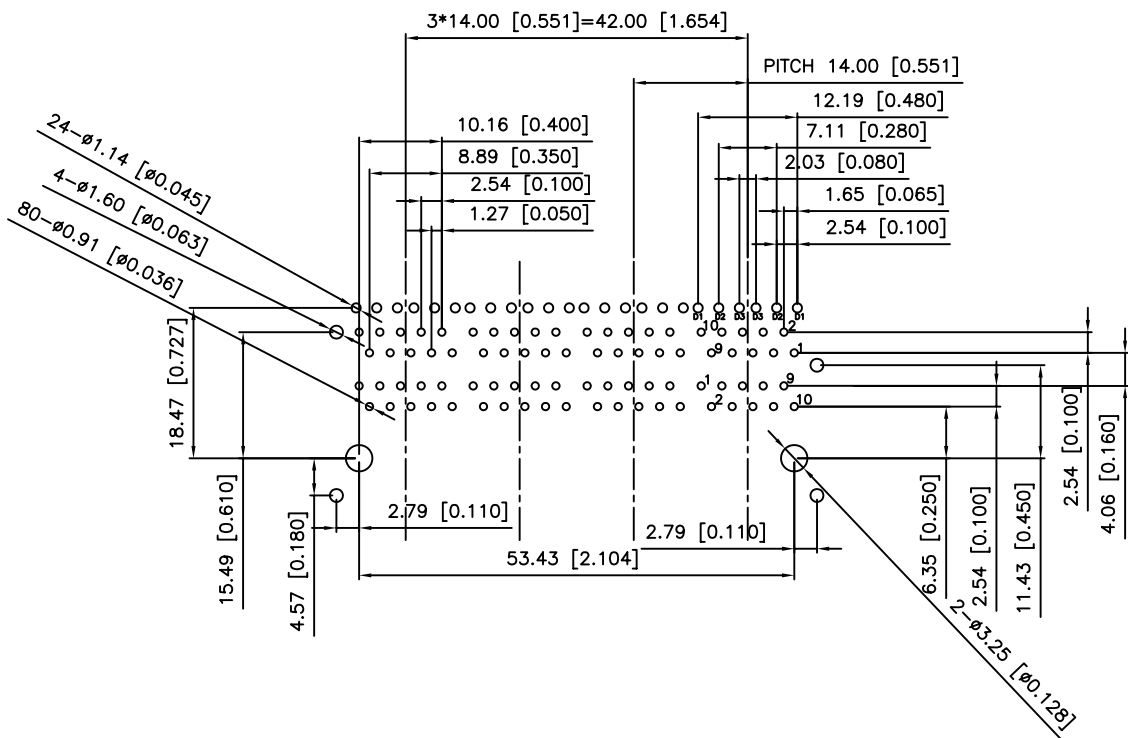
RECOMMENED PLUG DIMENSION:



RoHS Compliant

XMULTIPLE		CONNECTING THE INFORMATION AGE	
XMULTIPLE ASIA 4F, No. 347,Yang Guang St., Neihu , Taipei , Taiwan 11475		XMULTIPLE USA 1420 Los Angeles Ave., Suite G, Simi Valley, CA 93065	
THIS DRAWING IS A CONTROLLED DOCUMENT.		G/NO:	
TITLE: Stacked RJ45, W/LED, with 10/100 Mbps LAN Magnetics 8P,10C, Shielded, FOR P.O.E.		DWG NO: XPJH-24A-Z-P01-970	
PART NO: XPJH-24A-Z-P01-970		DRAWN: LEON	
		CHKD: JEFF	
		DATE: May.26.07	
UNIT mm[inch]		SHEET 1 of 3	
		REV 01	

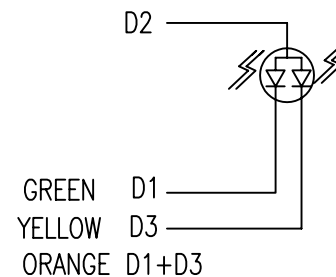
2. PCB LAYOUT :



SUGGESTED PCB LAYOUT
TOP VIEW

DIMENSIONAL TOLERANCE: .XX ±0.08[0.003]

3. LED CONFIGURATION :

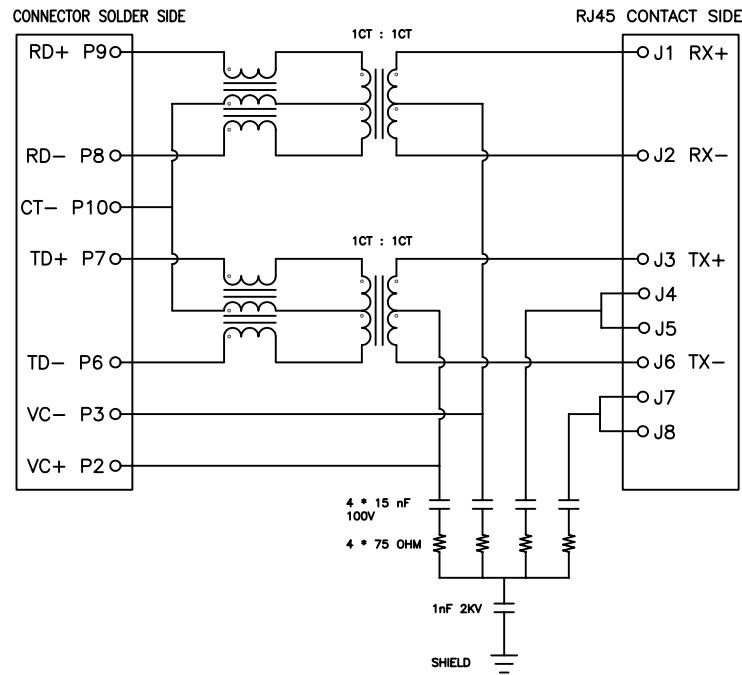


Color	Lens Color	Vf(v) @20mA		Iv(mcd) @10mA		Viewing angle
		Min	Max	Min	Typ	
Yellow	White Diffused	1.7	2.8	3.0	6.0	2θ 1/2
Green		1.7	2.8	3.5	6.0	

RoHS Compliant

XMULTIPLE		CONNECTING THE INFORMATION AGE	
XMULTIPLE ASIA 4F, No. 347, Yang Guang St., Neihu, Taipei, Taiwan 11475		XMULTIPLE USA 1420 Los Angeles Ave., Suite G, Simi Valley, CA 93065	
THIS DRAWING IS A CONTROLLED DOCUMENT.		G/NO:	
TITLE: Stacked RJ45, W/LED, with 10/100 Mbps LAN Magnetics 8P,10C, Shielded, FOR P.O.E.		DWG NO: XPJH-24A-Z-P01-970	
PART NO: XPJH-24A-Z-P01-970		DRAWN: LEON	
		UNIT	SHEET
		mm[inch]	2 of 3
		REV	DATE:
		01	May.26.07

4. SCHEMATIC:



5. ELECTRICAL CHARACTERISTICS :

TEST NOTES:(25±5°C)

1.TR:(100KHz,0.1V);

PINS:(P7-P6):(J3-J6)=1:1±3%

PINS:(P9-P8):(J1-J2)=1:1±3%

2.LX:(100KHz,100mV,8mA, DC Bias)

PINS:(P7,P6),(P9,P8)=350uH MINIMUM

3.DCR:

PINS:(J1-J2),(J3-J6)= 1.2 OHMS MAXIMUM

4.HIPOT:

PINS(P9,P10,P8)TO(J1,J2)=1500VAC FOR 60 SECONDS

PINS(P7,P10,P6)TO(J3,J6)=1500VAC FOR 60 SECONDS

5.INSERTION LOSS:

-1.0dB MAXIMUM AT 0.3MHz TO 100MHz;

6.RETURN LOSS:

-20dB MINIMUM AT 1MHz TO 30MHz;

-15dB MINIMUM AT 30MHz TO 60MHz

-10dB MINIMUM AT 60MHz TO 80MHz

7.CROSS TALK:

-30dB MINIMUM AT 1MHz TO 100MHz

8.COMMON TO COMMON MODE REJECTION:

-30dB MINIMUM AT 1MHz TO 100MHz

XPJH-24A-Z-P01-970

PRODUCT SERIES
XPJH : LATCH UP AND STACKED
FOR PoE TYPE

NUMBER OF PORTS
MECHANICAL TYPE
24A : 2*4 PORT, HORIZONTAL PIN,
LED ON TOP PORT ONLY OR
W/O LED

LED COLOR OPTION

PROTOCOL TYPE
P : 10/100 Mbps, 4 CORE
FOR PoE

CIRCUIT TYPE

SPECIAL CODE
0 : STANDARD

SHIELDED TYPE
7 : EMI FINGER ON ALL SIDE

LED POLARITY
9 : TRI-COLOR, TRI-COLOR

RoHS Compliant

X MULTIPLE		CONNECTING THE INFORMATION AGE	
X MULTIPLE ASIA 4F, No. 347, Yang Guang St., Neihu, Taipei, Taiwan 11475		X MULTIPLE USA 1420 Los Angeles Ave., Suite G, Simi Valley, CA 93065	
THIS DRAWING IS A CONTROLLED DOCUMENT.		G/NO:	
TITLE: Stacked RJ45, W/LED, with 10/100 Mbps LAN Magnetics 8P,10C, Shielded, FOR P.O.E.		DWG NO: XPJH-24A-Z-P01-970	
PART NO: XPJH-24A-Z-P01-970		DRAWN: LEON	
		CHKD: JEFF	
		DATE: May.26.07	
UNIT mm[inch]		SHEET 3 of 3	
		REV 01	