

1 2 3 4 5 6 7 8

A A

B B

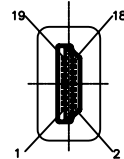
C C

D D

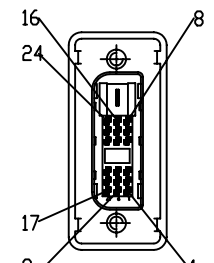
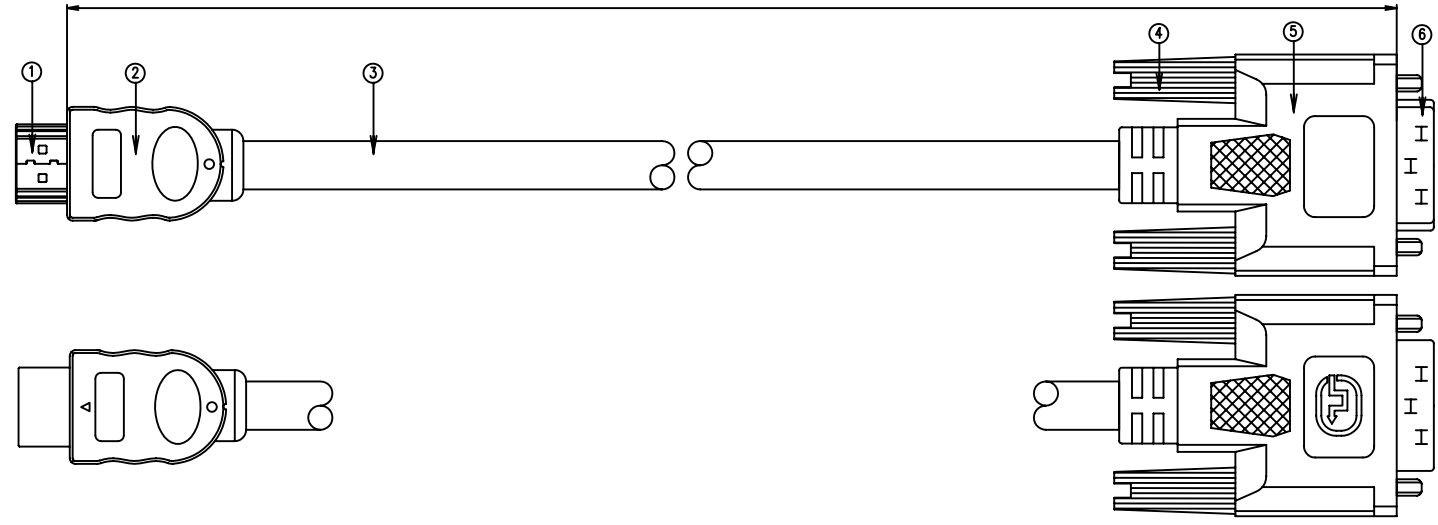
E E

F F

2000±0.50

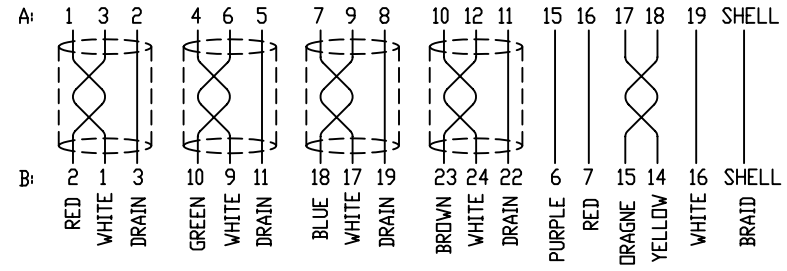


HDMI 19M(A)



DVI-D 18+1M(B)

PINOUT DIAGRAM



NOTE

1. 100% OPEN/SHORT TEST.
2. CONTACT RESISTANCE: $\leq 2\Omega$
3. INSULATION RESISTANCE: $\geq 10M\Omega$ DC 300V AT 10ms

RoHS Compliant

6	DVI-D (18+1) MALE CONN: G/F, INSULATOR: BLACK, SHELL: GOLD FLASH OVER.	1
5	PVC HOOD: IN BLACK(45P)	1
4	THUMB SCREW #4-40/AF40*32.8TNP.L35A, COLOR: BLACK, (GOLD PLATED)	2
3	UL20276 (1P*30AWG+D+F-E-AL)*4C+1P*30AWG+5C*30AWG+AL+B, OD=5.5, IN BLACK	1
2	MOLDING PVC: IN BLACK(45P)	
1	HDMI 19P MALE CONN: G/F 15u', INSULATOR: BLACK, SHELL: GOLD FLASH OVER.	1
NO.	DESCRIPTION	Q'TY

		CONNECTING THE INFORMATION AGE	
X MULTIPLE ASIA 4F, No. 347, Yang Guang St., Neihu, Taipei, Taiwan 11475		X MULTIPLE ASIA 1420 Los Angeles Ave., Suite G Sini Valley, CA 93065	
THIS DRAWING IS A CONTROLLED DOCUMENT.			
TITLE: Cable: HDMI 19 PIN, M TO DVI-D(18+1), M		CUSTOMER/NO:	
PART NO: XHDMI-C1-021-W		DWG NO: XHDMI-C1-021-W	
		DRAWN: RUNES	
DIMENSIONS: mm[inch]		CHKD: JEFF	
SHEET: 1 of 1		DATE: Dec.19,07	
REV: 01			

1 2 3 4 5 6 7 8