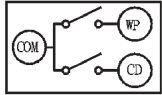
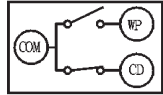


REV.	ECN NO.	DATE
A	Released	04/21/2006
B	1104/08	11/04/2008
C	1125/10	11/25/2010

CIRCUIT without CARD

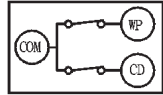


CARD INSERTED



* Wire Protect SW: Lock
* Status: Read only

CARD INSERTED



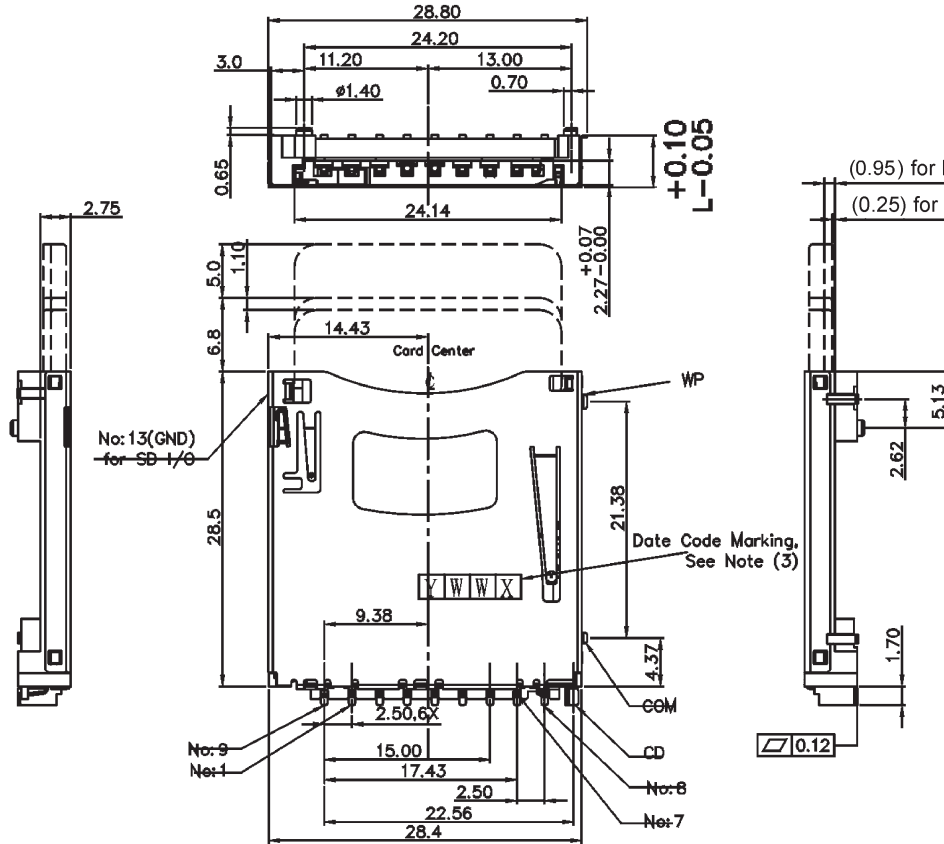
* Wire Protect SW: Unlock
* Status: Write enable

How to Order:

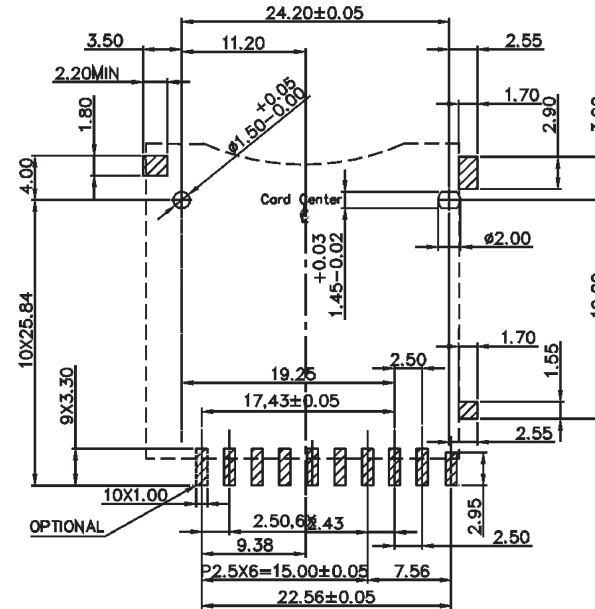
XSDC - SD04c - M - 9 - x - B - x - 3

Plating
S5: Sel. 5u" gold
S10: Sel. 10u" gold
S15: Sel. 15u" gold

Standoff
1: 0.0mm, L=2.75mm
3: 2.0mm, L=4.25mm
5: 1.5mm, L=4.55mm
6: 1.8mm, L=4.75mm



Recommended P.C.Board Layout



Specifications:
Materials:
* Contact: Phosphor Bronze
* Housing: LCP, (UL94V-0), Black

RoHS Compliant

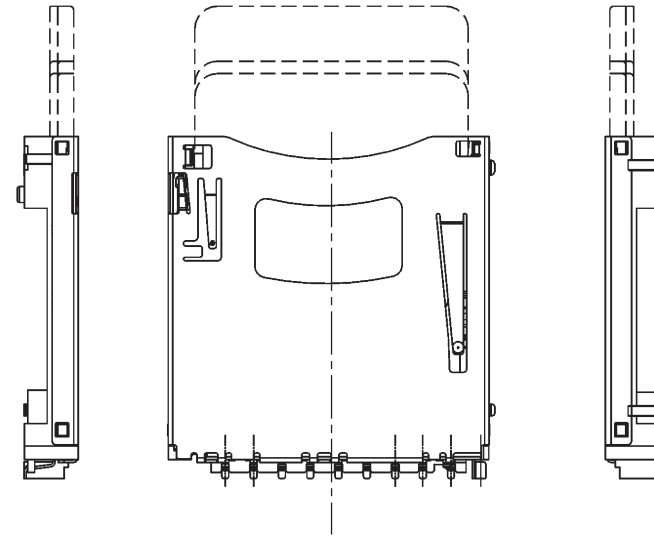
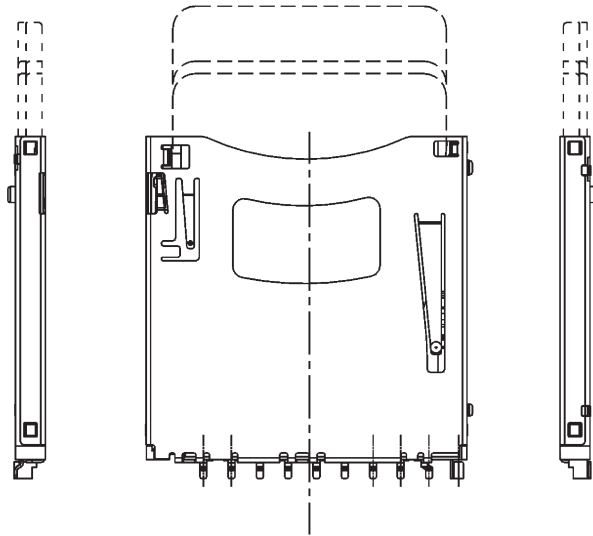
Scale		Drawn by	ANGLIA	XMULTIPLE	
Unit	mm	Checked by	Kevin		
Tolerance		Sheet	1 of 2		
Name: SD Connecotr Push-Push Assembly (I/O)					
.X ± 0.2		Projection		Part number	XSDC-SD04c-M-9-x-B-x-3
.XX ± 0.1				Drawing no.	SD04c-M-9-x-B-x-3
.XXX ± 0.05					
ANG. = ± 5°					

REV.	ECN NO.	DATE
A	Released	04/21/2006

Standoff 0.0mm



Standoff 1.5mm, 1.8mm ,2.0mm



RoHS Compliant

Scale		Drawn by	ANGLIA	XMULTIPLE	
Unit	mm	Checked by	Kevin		
Tolerance		Sheet	2 of 2	Name: SD Connecotr Push-Push Assembly (I/O)	
.X	± 0.2	Projection		Part number	XSDC-SD04c-M-9-x-B-x-3
.XX	± 0.1			Drawing no.	SD04c-M-9-x-B-x-x
.XXX	± 0.05				
ANG.	± 5°				