

REV.	ECN NO.	DATE
A	Released	04/21/2006
B	1104/08	11/04/2008
C	1125/10	11/25/2010

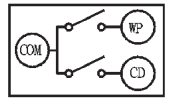
How to Order:

SD04c - M - 9 - x - B - x - 3

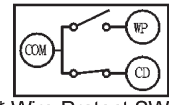
Plating  
 S5: Sel. 5u" gold  
 S10: Sel. 10u" gold  
 S15: Sel. 15u" gold

Standoff  
 1: 0.0mm , L=2.75mm  
 3: 2.0mm , L=4.25mm  
 5: 1.5mm , L=4.55mm  
 6: 1.8mm , L=4.75mm

CIRCUIT without CARD

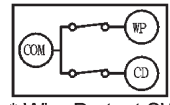


CARD INSERTED

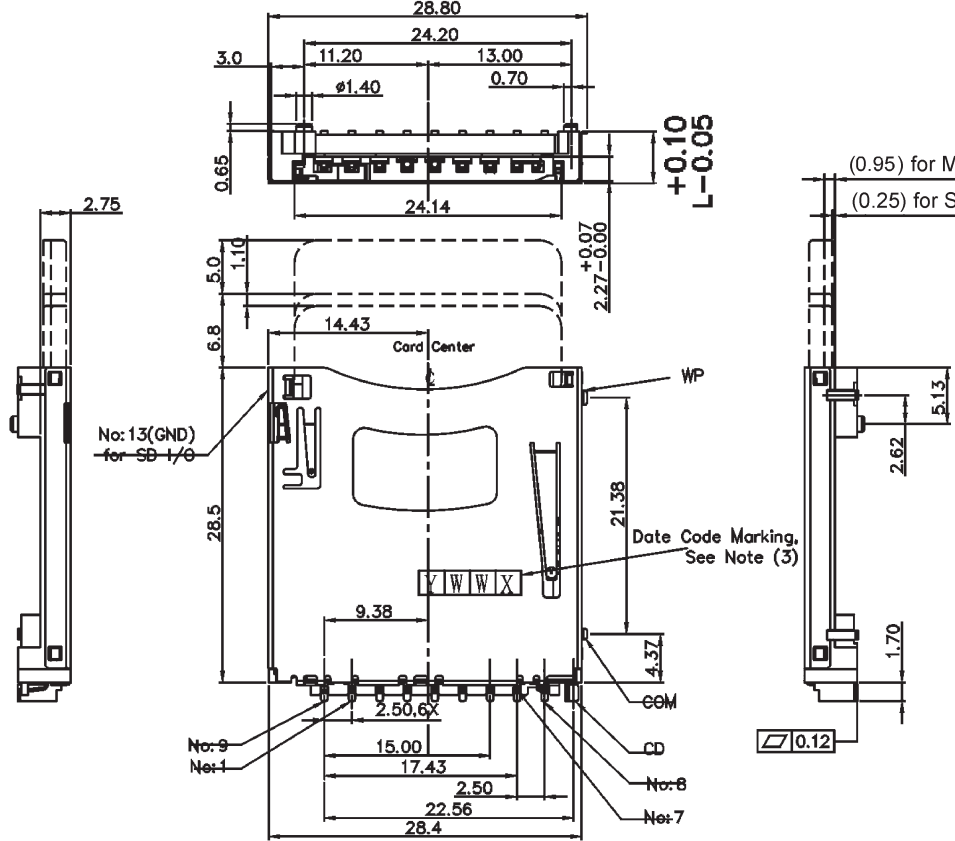


\* Wire Protect SW: Lock  
 \* Status: Read only

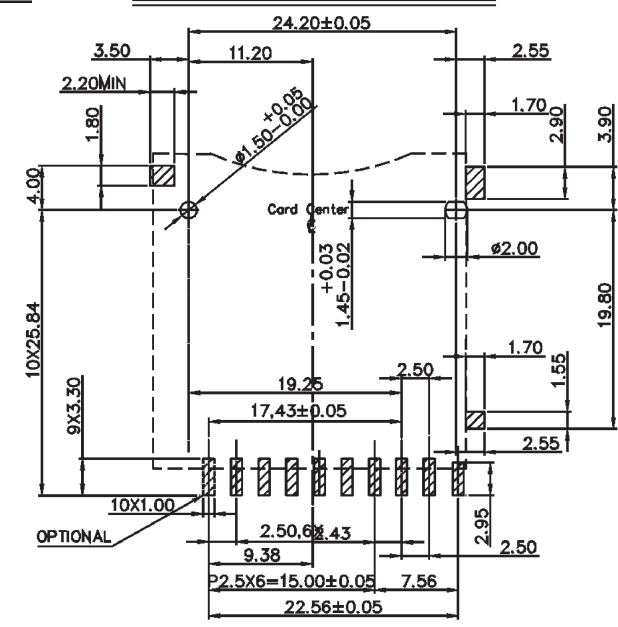
CARD INSERTED



\* Wire Protect SW: Unlock  
 \* Status: Write enable



Recommended P.C.Board Layout



**Specifications:**  
**Materials:**  
 \* Contact: Phosphor Bronze  
 \* Housing: LCP, (UL94V-0), Black

**RoHS Compliant**

Scale		Drawn by	ANGLIA	<b>XMULTIPLE</b>	
Unit	mm	Checked by	Kevin		
Tolerance		Sheet	1 of 2		
.X ± 0.2		Projection		Name: SD Connecotr Push-Push Assembly (I/O)	
.XX ± 0.1				Part number	SD04c-M-9-x-B-x-3
.XXX ± 0.05				Drawing no.	SD04c-M-9-x-B-x-3
ANG. ± 5°					